

## SARS-CoV-2 Spike P26S Antibody (Gamma Variant)

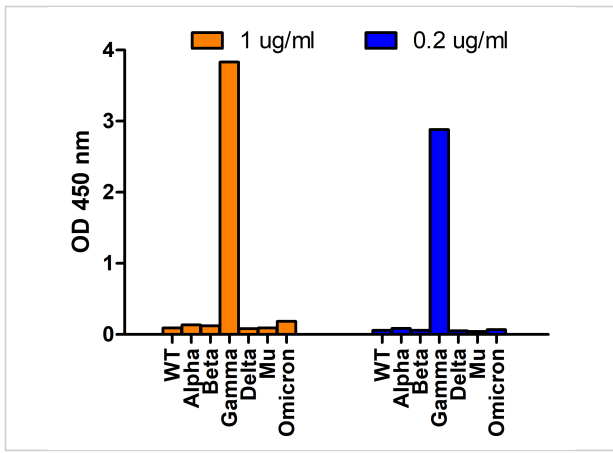
CATALOG NUMBER: 9573

### Specifications

Host Species	Rabbit
Species Reactivity	Virus
Homology	Predicted reactivity based on immunogen sequence: SARS-CoV Spike proteins: (36.4%)
Immunogen	Anti-SARS-CoV-2 Spike P26S (Gamma Variant) antibody ( <b>9573</b> ) was raised against a peptide corresponding to 11 amino acids near the amino terminus of SARS-CoV-2 Gamma variant (P.1) Spike protein. The immunogen is located within the first 50 amino acids of SARS-CoV-2 Gamma variant (P.1) Spike protein.
Conjugate	Unconjugated
Tested Applications	ELISA, WB
User Note	Optimal dilutions for each application to be determined by the researcher.
Specificity	It can only detect SARS-CoV-2 Gamma Variant (P.1) Spike S1 protein and does not cross-react with the spike protein of other variants.

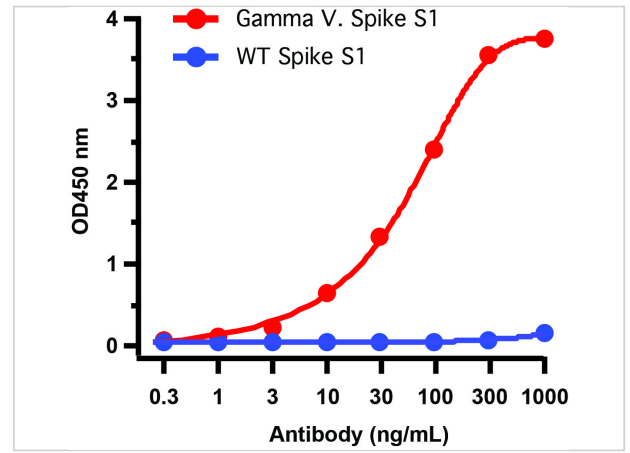
### Properties

Purification	SARS-CoV-2 Spike P26S (Gamma Variant) antibody is affinity chromatography purified via peptide column.
Clonality	Polyclonal
Isotype	IgG
Physical State	Liquid
Buffer	SARS-CoV-2 Spike P26S antibody is supplied in PBS containing 0.02% sodium azide.
Concentration	1 mg/mL
Storage Conditions	SARS-CoV-2 Spike P26S antibody can be stored at 4°C for three months and -20°C, stable for up to one year. As with all antibodies care should be taken to avoid repeated freeze thaw cycles. Antibodies should not be exposed to prolonged high temperatures.



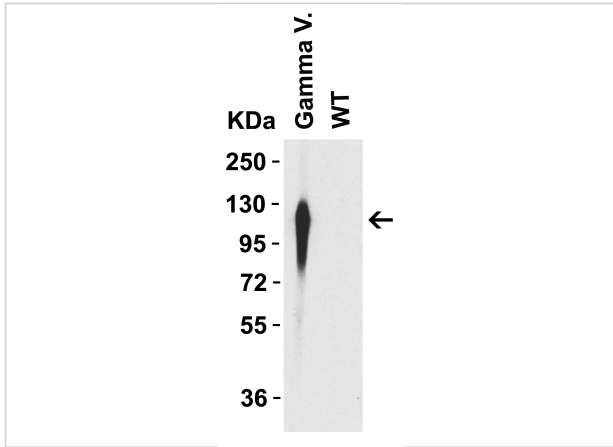
### SARS-CoV-2 Spike P26S Antibody (Gamma Variant) 1

**Figure 1 SARS-Cov-2 Spike P26S ( Gamma Variant ) Antibodies Specifically Detect Gamma Variant Spike S1 Protein in an ELISA**  
Coating Antigen: SARS-CoV-2 spike S1 proteins WT, alp...



### SARS-CoV-2 Spike P26S Antibody (Gamma Variant) 2

**Figure 2 ELISA Validation of Gamma Variant Spike S1 Antibodies with SARS-CoV-2 Gamma Variant Spike S1 Protein**  
Coating Antigen: SARS-CoV-2 spike S1 proteins WT and Gamma variant...



### SARS-CoV-2 Spike P26S Antibody (Gamma Variant) 3

**Figure 3 WB Validation of Gamma Variant Spike S1 Antibodies with SARS-CoV-2 Gamma Variant Spike S1 Protein**  
Loading: 50 ng of SARS-CoV-2 spike S1 proteins, including WT and Gam...

## Disclaimer

#### Disclaimer

Optimal dilutions/concentrations should be determined by the end user. The information provided is a guideline for product use. This product is for research use only.

For research use only. For additional information, visit ProSci's [Terms and Conditions Page](#).