

## CX3CL1 Antibody

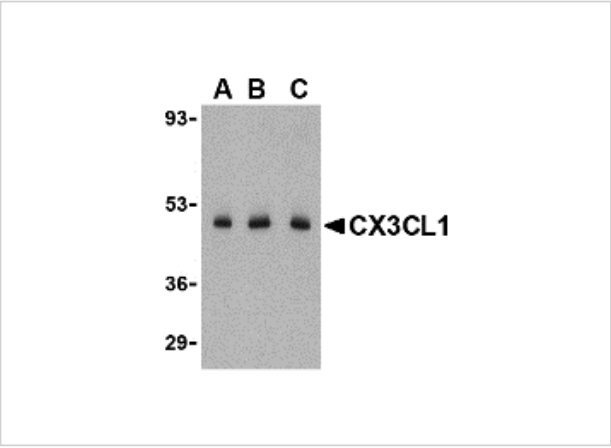
CATALOG NUMBER: 2099

### Specifications

Host Species	Rabbit
Species Reactivity	Human, Mouse
Homology	Predicted species reactivity based on immunogen sequence: Rat: (79%)
Immunogen	CX3CL1 antibody was raised against a peptide corresponding to 18 amino acids near the amino terminus of human CX3CL1. The immunogen is located within amino acids 20 - 70 of CX3CL1.
Conjugate	Unconjugated
Tested Applications	ELISA, IP, WB
User Note	Optimal dilutions for each application to be determined by the researcher.

### Properties

Purification	CX3CL1 Antibody is affinity chromatography purified via peptide column.
Clonality	Polyclonal
Isotype	IgG
Physical State	Liquid
Buffer	CX3CL1 Antibody is supplied in PBS containing 0.02% sodium azide.
Concentration	1 mg/ml
Storage Conditions	CX3CL1 antibody can be stored at 4°C for three months and -20°C, stable for up to one year. As with all antibodies care should be taken to avoid repeated freeze thaw cycles. Antibodies should not be exposed to prolonged high temperatures.



CX3CL1 Antibody 1

Western blot analysis of CX3CL1 in C2C12 cell lysate with CX3CL1 antibody at (A) 0.5, (B) 1 and (C) 2 µg/mL.

Disclaimer

Disclaimer	Optimal dilutions/concentrations should be determined by the end user. The information provided is a guideline for product use. This product is for research use only.
------------	--

For research use only. For additional information, visit ProSci's [Terms and Conditions Page](#).