

SARS-CoV-2 (COVID-19) ORF8 Antibody

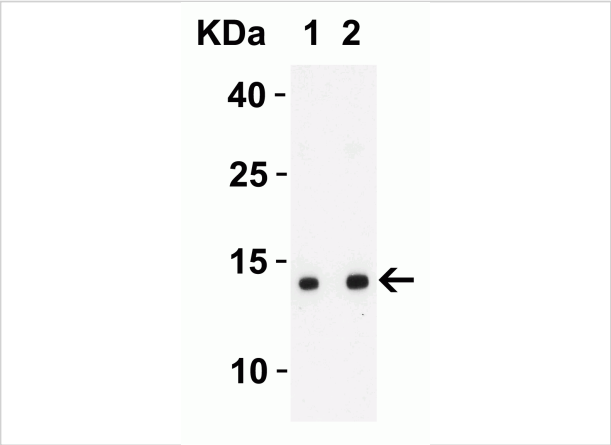
CATALOG NUMBER: 9289

Specifications

Host Species	Rabbit
Species Reactivity	Virus
Immunogen	Anti-SARS-CoV-2 (COVID-19) ORF8 antibody (9289) was raised against a peptide corresponding to 13 amino acids near the central domain of SARS-CoV-2 (COVID-19) ORF8 protein. The immunogen is located within 30-80 amino acids of the SARS-CoV-2 (COVID-19) ORF8 protein.
Conjugate	Unconjugated
Tested Applications	ELISA, WB
User Note	Optimal dilutions for each application to be determined by the researcher.
Specificity	ORF8 Antibody is predicted to not cross-react with other coronavirus family members.
Predicted Molecular Weight	14kD

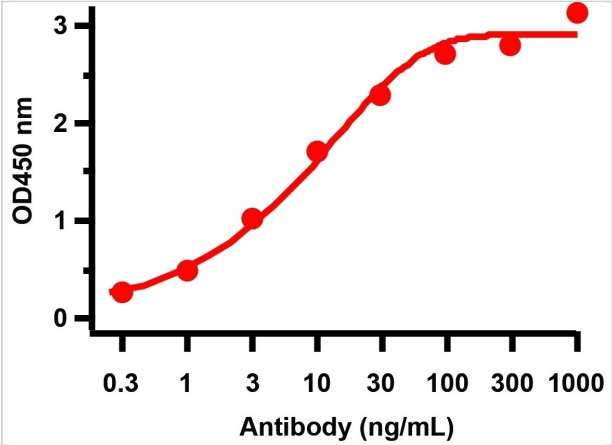
Properties

Purification	SARS-CoV-2 (COVID-19) ORF8 Antibody is affinity chromatography purified via peptide column.
Clonality	Polyclonal
Isotype	IgG
Physical State	Liquid
Buffer	SARS-CoV-2 (COVID-19) ORF8 antibody is supplied in PBS containing 0.02% sodium azide.
Concentration	1 mg/mL
Storage Conditions	SARS-CoV-2 (COVID-19) ORF8 antibody can be stored at 4°C for three months and -20°C, stable for up to one year. As with all antibodies care should be taken to avoid repeated freeze thaw cycles. Antibodies should not be exposed to prolonged high temperatures.



SARS-CoV-2 (COVID-19) ORF8
Antibody 1

Figure 1 Western Blot Validation with SARS-CoV-2 (COVID-19) ORF8 Protein
Loading: 30 ng per lane of SARS-CoV-2 (COVID-19) ORF8 recombinant protein (10-436).Antibodies: SARS-CoV-...



SARS-CoV-2 (COVID-19) ORF8
Antibody 2

Figure 2 ELISA Validation
Antibodies: SARS-CoV-2 (COVID-19) ORF8 Antibody, 9289. A direct ELISA was performed using SARS-CoV-2 ORF8 immunogen peptide (9289P)) as coating antige...

Disclaimer

Disclaimer	Optimal dilutions/concentrations should be determined by the end user. The information provided is a guideline for product use. This product is for research use only.
------------	--

For research use only. For additional information, visit ProSci's [Terms and Conditions Page](#).