

## SARS-CoV-2 (COVID-19) NSP15 Antibody

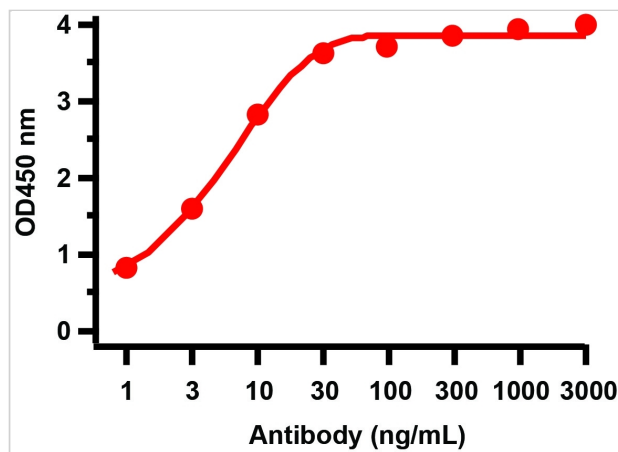
CATALOG NUMBER: 9269

### Specifications

Host Species	Rabbit
Species Reactivity	Virus
Homology	Predicted reactivity based on immunogen sequence: SARS-CoV NSP15 protein: (100%).
Immunogen	Anti-SARS-CoV-2 (COVID-19) NSP15 antibody ( <b>9269</b> ) was raised against a peptide corresponding to 15 amino acids near the carboxyl terminus of SARS-CoV-2 (COVID-19) NSP15 protein. The immunogen is located within the last 50 amino acids of the SARS-CoV-2 (COVID-19) NSP15 protein.
Conjugate	Unconjugated
Tested Applications	ELISA, WB
User Note	Optimal dilutions for each application to be determined by the researcher.

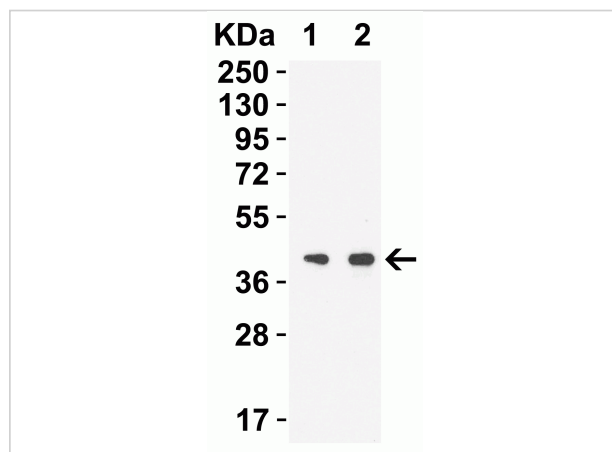
### Properties

Purification	SARS-CoV-2 (COVID-19) NSP15 Antibody is affinity chromatography purified via peptide column.
Clonality	Polyclonal
Isotype	IgG
Physical State	Liquid
Buffer	SARS-CoV-2 (COVID-19) NSP15 antibody is supplied in PBS containing 0.02% sodium azide.
Concentration	1 mg/mL
Storage Conditions	SARS-CoV-2 (COVID-19) NSP15 antibody can be stored at 4°C for three months and -20°C, stable for up to one year. As with all antibodies care should be taken to avoid repeated freeze thaw cycles. Antibodies should not be exposed to prolonged high temperatures.



## SARS-CoV-2 (COVID-19) NSP15 Antibody 1

**Figure 1 ELISA Validation with SARS-CoV-2 (COVID-19) NSP15 Protein**  
Antibodies: SARS-CoV-2 (COVID-19) NSP15 Antibody, 9269. A direct ELISA was performed using SARS-CoV-2 NSP15...



## SARS-CoV-2 (COVID-19) NSP15 Antibody 2

**Figure 2 Western Blot Validation with SARS-CoV-2 (COVID-19) NSP15 Protein**  
Loading: 30 ng per lane of SARS-CoV-2 (COVID-19) NSP15 recombinant protein (10-420). Antibodies: SARS-Co...

## Disclaimer

### Disclaimer

Optimal dilutions/concentrations should be determined by the end user. The information provided is a guideline for product use. This product is for research use only.

For research use only. For additional information, visit ProSci's [Terms and Conditions Page](#).