

CIDE-B Antibody

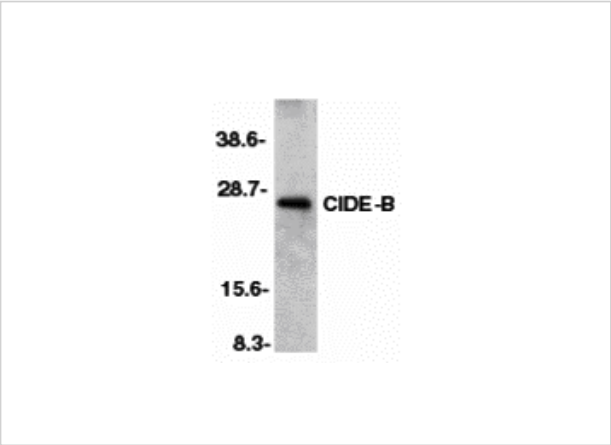
CATALOG NUMBER: 2091

Specifications

Host Species	Rabbit
Species Reactivity	Mouse
Immunogen	CIDE-B antibody was raised against a 16 amino acid peptide near the carboxy terminus of murine CIDE-B. The immunogen is located within the last 50 amino acids of CIDE-B.
Conjugate	Unconjugated
Tested Applications	ELISA, WB
User Note	Optimal dilutions for each application to be determined by the researcher.
Specificity	It has no cross activity to CIDE-A.
Predicted Molecular Weight	25 kDa

Properties

Purification	CIDE-B Antibody is affinity chromatography purified via peptide column.
Clonality	Polyclonal
Isotype	IgG
Physical State	Liquid
Buffer	CIDE-B Antibody is supplied in PBS containing 0.02% sodium azide.
Concentration	1 mg/ml
Storage Conditions	CIDE-B antibody can be stored at 4°C for three months and -20°C, stable for up to one year. As with all antibodies care should be taken to avoid repeated freeze thaw cycles. Antibodies should not be exposed to prolonged high temperatures.



CIDE-B Antibody 1

Western blot analysis of CIDE-B in mouse liver tissue lysate with CIDE-B antibody at 1:500 dilution.

Disclaimer

Disclaimer	Optimal dilutions/concentrations should be determined by the end user. The information provided is a guideline for product use. This product is for research use only.
------------	--

For research use only. For additional information, visit ProSci's [Terms and Conditions Page](#).