

SARS-CoV-2 (COVID-19) NSP9 Antibody

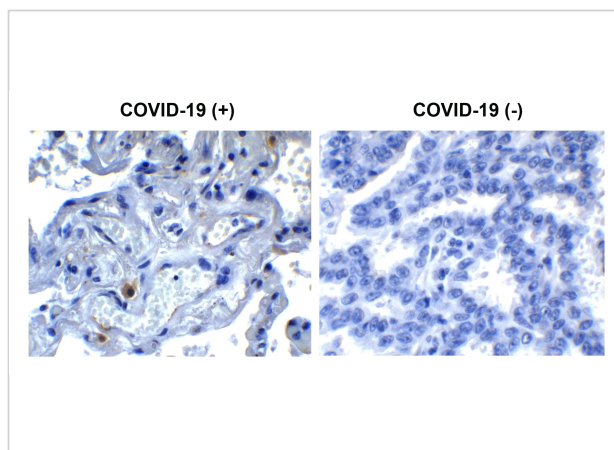
CATALOG NUMBER: 9161

Specifications

Host Species	Rabbit
Species Reactivity	Virus
Homology	Predicted reactivity based on immunogen sequence: SARS-CoV NSP8 protein: (100%)
Immunogen	Anti-SARS-CoV-2 (COVID-19) NSP9 antibody (9161) was raised against a peptide corresponding to 13 amino acids near the center of SARS-CoV-2 (COVID-19) NSP9 protein. The immunogen is located within 30-80 amino acids of the SARS-CoV-2 (COVID-19) NSP9 protein.
Conjugate	Unconjugated
Tested Applications	ELISA, IHC
User Note	Optimal dilutions for each application to be determined by the researcher.

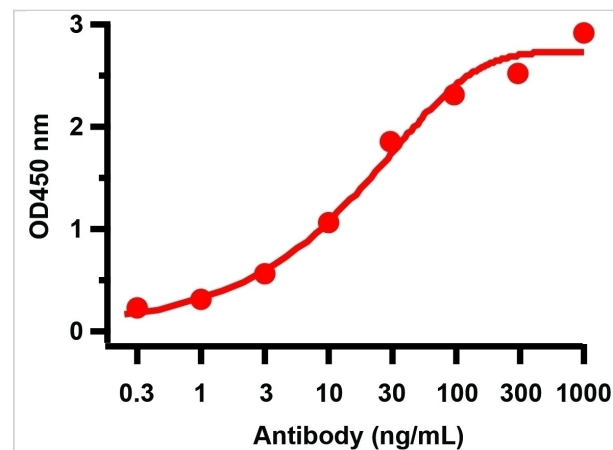
Properties

Purification	SARS-CoV-2 (COVID-19) NSP9 Antibody is affinity chromatography purified via peptide column.
Clonality	Polyclonal
Isotype	IgG
Physical State	Liquid
Buffer	SARS-CoV-2 (COVID-19) NSP9 Antibody is supplied in PBS containing 0.02% sodium azide.
Concentration	1 mg/mL
Storage Conditions	SARS-CoV-2 (COVID-19) NSP9 antibody can be stored at 4°C for three months and -20°C, stable for up to one year. As with all antibodies care should be taken to avoid repeated freeze thaw cycles. Antibodies should not be exposed to prolonged high temperatures.



SARS-CoV-2 (COVID-19) NSP9 Antibody 1

Figure 1 Immunohistochemistry Validation of SARS-CoV-2 (COVID-19) NSP9 in COVID-19 Patient Lung
Immunohistochemical analysis of paraffin-embedded COVID-19 patient lung tissue u...



SARS-CoV-2 (COVID-19) NSP9 Antibody 2

Figure 2 ELISA Validation
Antibodies: SARS-CoV-2 (COVID-19) NSP9 Antibody, 9161. A direct ELISA was performed using immunogen peptide (9161P) as coating antigen and the anti-SA...

Disclaimer

Disclaimer

Optimal dilutions/concentrations should be determined by the end user. The information provided is a guideline for product use. This product is for research use only.

For research use only. For additional information, visit ProSci's [Terms and Conditions Page](#).