

SIGLEC15 Antibody

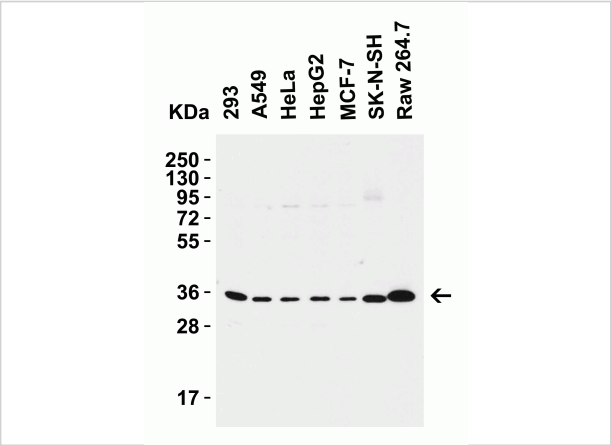
CATALOG NUMBER: 9017

Specifications

Host Species	Rabbit
Species Reactivity	Human, Mouse, Rat
Immunogen	Anti-SIGLEC15 antibody (9017) was raised against a peptide corresponding to 14 amino acids near the carboxy terminus of human SIGLEC15. The immunogen is located within amino acids 270-320 of SIGLEC15.
Conjugate	Unconjugated
Tested Applications	ELISA, WB
User Note	Optimal dilutions for each application to be determined by the researcher.
Predicted Molecular Weight	Predicted: 36kD Observed: 34-36kD

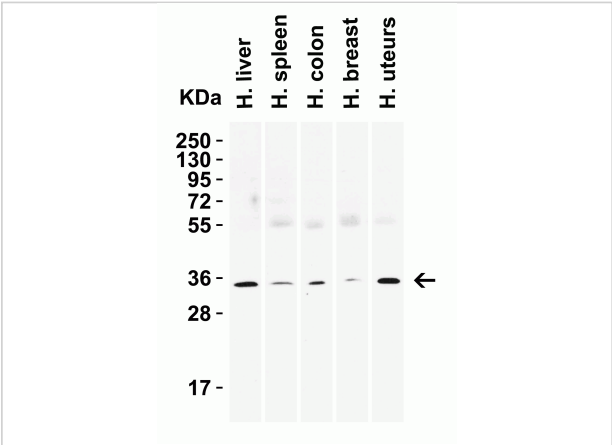
Properties

Purification	SIGLEC15 Antibody is affinity chromatography purified via peptide column.
Clonality	Polyclonal
Isotype	IgG
Physical State	Liquid
Buffer	SIGLEC15 Antibody is supplied in PBS containing 0.02% sodium azide.
Concentration	1 mg/mL
Storage Conditions	SIGLEC15 antibody can be stored at 4°C for three months and -20°C, stable for up to one year. As with all antibodies care should be taken to avoid repeated freeze thaw cycles. Antibodies should not be exposed to prolonged high temperatures.



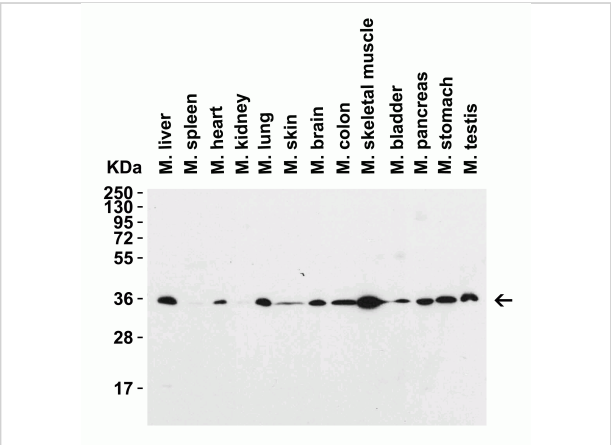
SIGLEC15 Antibody 1

Figure 1 Western Blot Validation in Human and Mouse Cell Lines
 Loading: 15 µg of lysates per lane. Antibodies: SIGLEC15, 9017 (2 µg/mL), 1h incubation at RT in 5% NFDm/TBST. Secondary: Goat ...



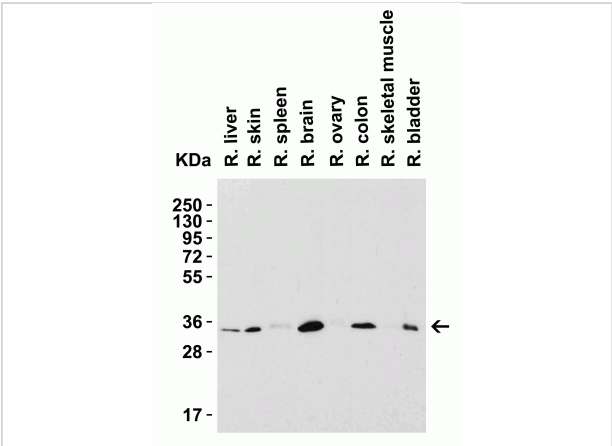
SIGLEC15 Antibody 2

Figure 2 Western Blot Validation in Human Tissues
 Loading: 15 µg of lysates per lane. Antibodies: SIGLEC15, 9017 (2 µg/mL), 1h incubation at RT in 5% NFDm/TBST. Secondary: Goat ...



SIGLEC15 Antibody 3

Figure 3 Western Blot Validation in Mouse Tissues
 Loading: 15 µg of lysates per lane. Antibodies: SIGLEC15, 9017 (2 µg/mL), 1h incubation at RT in 5% NFDm/TBST. Secondary: Goat ...



SIGLEC15 Antibody 4

Figure 4 Western Blot Validation in Rat Tissues
 Loading: 15 µg of lysates per lane. Antibodies: SIGLEC15, 9017 (2 µg/mL), 1h incubation at RT in 5% NFDm/TBST. Secondary: Goat an...

Disclaimer

Disclaimer

Optimal dilutions/concentrations should be determined by the end user. The information provided is a guideline for product use. This product is for research use only.