

## IRF7 Antibody

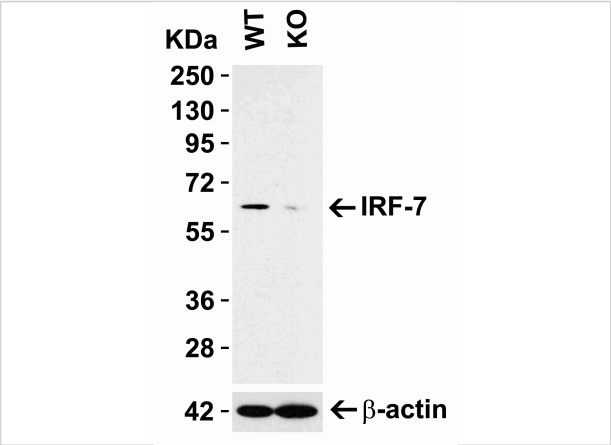
CATALOG NUMBER: 8991

### Specifications

|                     |  |
|---------------------|--|
| Host Species        | Rabbit   |
| Species Reactivity  | Human, Mouse, Rat  |
| Immunogen           | Anti-IRF7 antibody ( <b>8991</b> ) was raised against a peptide corresponding to 17 amino acids near the center of human IRF7.<br>The immunogen is located within amino acids 200-230 of IRF7. |
| Conjugate           | Unconjugated   |
| Tested Applications | ELISA, IHC-P, WB   |
| User Note           | Optimal dilutions for each application to be determined by the researcher.   |
| Specificity         | Several isoforms of IRF7 are known to exist.   |

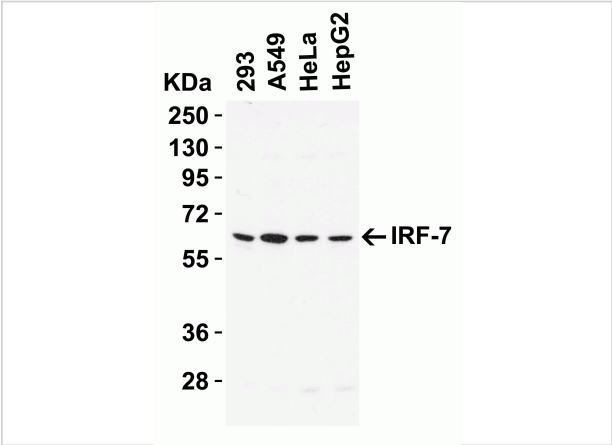
### Properties

|                    |  |
|--------------------|--|
| Purification       | IRF7 Antibody is affinity chromatography purified via peptide column.  |
| Clonality          | Polyclonal   |
| Isotype            | IgG  |
| Physical State     | Liquid   |
| Buffer             | IRF7 Antibody is supplied in PBS containing 0.02% sodium azide.  |
| Concentration      | 1 mg/mL  |
| Storage Conditions | IRF7 antibody can be stored at 4°C for three months and -20°C, stable for up to one year. As with all antibodies care should be taken to avoid repeated freeze thaw cycles. Antibodies should not be exposed to prolonged high temperatures. |



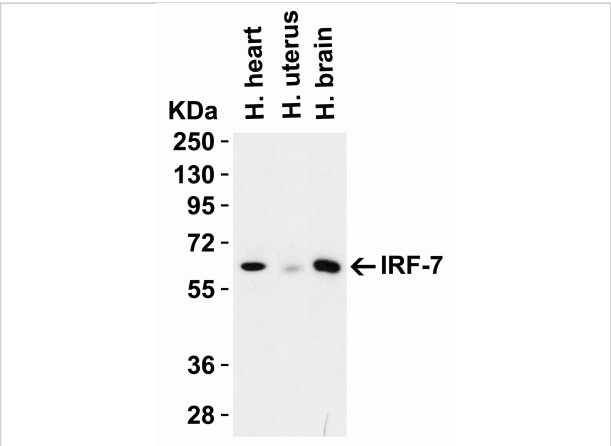
IRF7 Antibody 1

**Figure 1 KO Validation in A549 Cell Lysate**  
Loading: 10  $\mu$ g of A549 WT cell lysates or IRF7 KO cell lysates.  
Antibodies: IRF7 8991 (0.5  $\mu$ g/mL) and beta-actin 3779 (1  $\mu$ g/mL), 1 h...



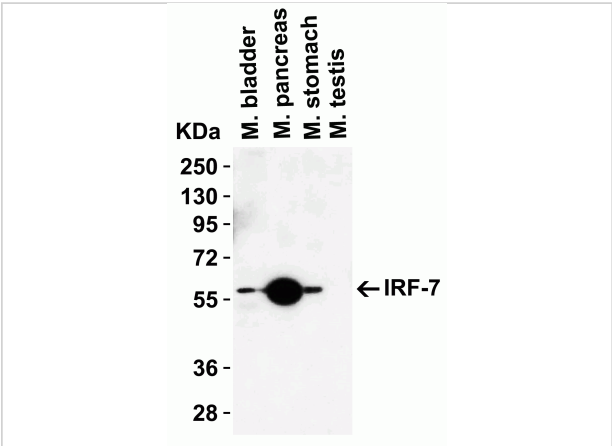
IRF7 Antibody 2

**Figure 2 Western Blot Validation in Human Cell Lines**  
Loading: 15  $\mu$ g of lysates per lane. Antibodies: IRF7, 8991, (1  $\mu$ g/mL), 1 h incubation at RT in 5% NFDN/TBST. Secondary: Goat an...



IRF7 Antibody 3

**Figure 3 Western Blot Validation in Human Tissues**  
Loading: 15  $\mu$ g of lysates per lane. Antibodies: IRF7, 8991 (1  $\mu$ g/mL), 1 h incubation at RT in 5% NFDN/TBST. Secondary: Goat anti-...



IRF7 Antibody 4

**Figure 4 Western Blot Validation in Mouse Tissues**  
Loading: 15  $\mu$ g of lysates per lane. Antibodies: IRF7, 8991 (1  $\mu$ g/mL), 1 h incubation at RT in 5% NFDN/TBST. Secondary: Goat anti-...

Disclaimer

|            |  |
|------------|--|
| Disclaimer | Optimal dilutions/concentrations should be determined by the end user. The information provided is a guideline for product use. This product is for research use only. |
|------------|--|

For research use only. For additional information, visit ProSci's [Terms and Conditions Page](#).