

## CD276 Antibody

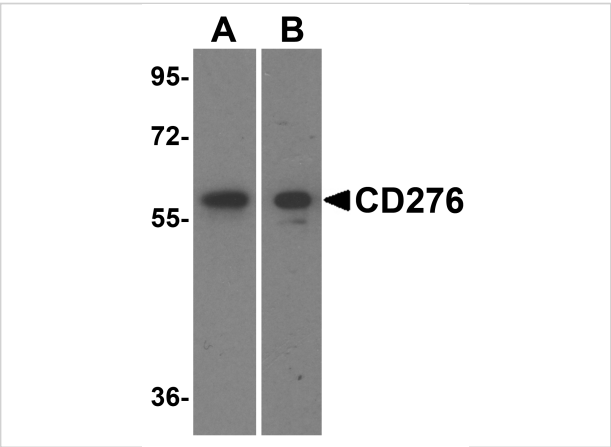
CATALOG NUMBER: 8689

### Specifications

Host Species	Rabbit
Species Reactivity	Human, Mouse, Rat
Immunogen	CD276 antibody was raised against a peptide corresponding to 19 amino acids near the carboxy terminus of CD276. The immunogen is located within amino acids 484 - 534 of CD276.
Conjugate	Unconjugated
Tested Applications	ELISA, IF, IHC-P, WB
User Note	Optimal dilutions for each application to be determined by the researcher.
Specificity	At least three antibodies are known to exist; this antibody will detect all three isoforms.
Predicted Molecular Weight	Predicted: 35, 43, 57 kDa Observed: 59 kDa

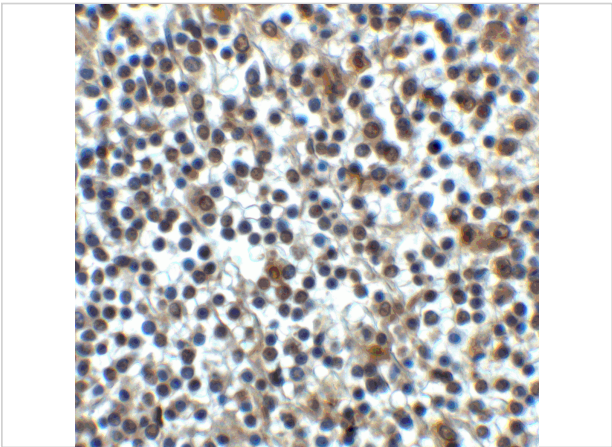
### Properties

Purification	CD276 Antibody is affinity chromatography purified via peptide column.
Clonality	Polyclonal
Isotype	IgG
Physical State	Liquid
Buffer	CD276 Antibody is supplied in PBS containing 0.02% sodium azide.
Concentration	1 mg/mL
Storage Conditions	CD276 antibody can be stored at 4°C for three months and -20°C, stable for up to one year. As with all antibodies care should be taken to avoid repeated freeze thaw cycles. Antibodies should not be exposed to prolonged high temperatures.



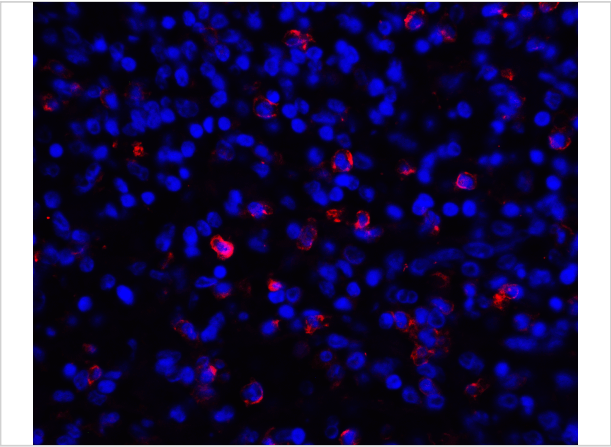
### CD276 Antibody 1

Western blot analysis of CD276 in (A) human spleen and (B) mouse spleen tissue lysate with CD276 antibody at 0.5 µg/mL.



### CD276 Antibody 2

Immunohistochemistry of CD276 in human spleen tissue with CD276 antibody at 2 µg/mL.



### CD276 Antibody 3

Immunofluorescence of CD276 in human spleen tissue with CD276 antibody at 20 µg/mL.

Red: CD276 Antibody (8689)  
Blue: DAPI staining

## Disclaimer

Disclaimer	Optimal dilutions/concentrations should be determined by the end user. The information provided is a guideline for product use. This product is for research use only.
------------	--

For research use only. For additional information, visit ProSci's [Terms and Conditions Page](#).