

## CD86 Antibody

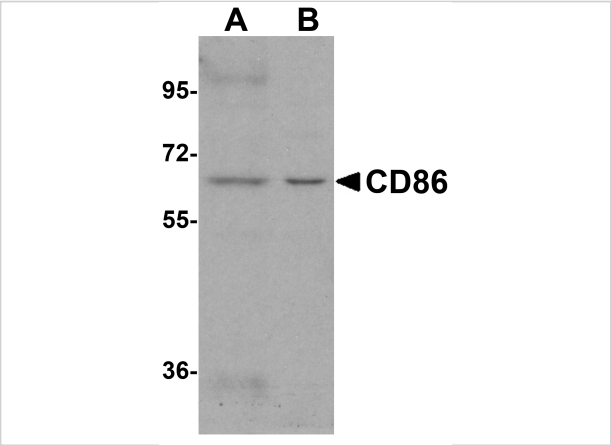
CATALOG NUMBER: 8681

### Specifications

Host Species	Rabbit
Species Reactivity	Human
Homology	Predicted species reactivity based on immunogen sequence: Rabbit: (75%), Mouse: (75%)
Immunogen	CD86 antibody was raised against a peptide corresponding to 17 amino acids near the center of human CD86. The immunogen is located within amino acids 160 - 210 of CD86.
Conjugate	Unconjugated
Tested Applications	ELISA, IF, IHC-P, WB
User Note	Optimal dilutions for each application to be determined by the researcher.
Specificity	At least five isoforms of CD86 are known to exist; this antibody will detect all five isoforms.
Predicted Molecular Weight	Predicted: 36 kDa Observed: 68 kDa

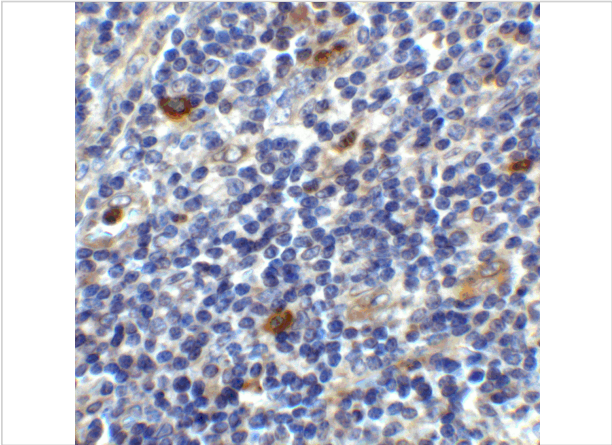
### Properties

Purification	CD86 Antibody is affinity chromatography purified via peptide column.
Clonality	Polyclonal
Isotype	IgG
Physical State	Liquid
Buffer	CD86 Antibody is supplied in PBS containing 0.02% sodium azide.
Concentration	1 mg/mL
Storage Conditions	CD86 antibody can be stored at 4°C for three months and -20°C, stable for up to one year. As with all antibodies care should be taken to avoid repeated freeze thaw cycles. Antibodies should not be exposed to prolonged high temperatures.



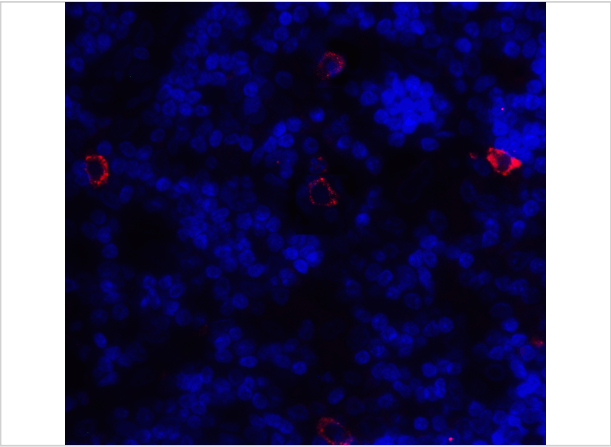
CD86 Antibody 1

Western blot analysis of CD86 in (A) Daudi and (B) Raji cell lysate with CD86 antibody at 1 µg/mL.



CD86 Antibody 2

Immunohistochemistry of CD86 in human lymph node tissue with CD86 antibody at 2 µg/mL.



CD86 Antibody 3

Immunofluorescence of CD86 in human lymph node tissue with CD86 antibody at 20 µg/mL.

Red: CD86 Antibody (8681)  
Blue: DAPI staining

Disclaimer

Disclaimer	Optimal dilutions/concentrations should be determined by the end user. The information provided is a guideline for product use. This product is for research use only.
------------	--

For research use only. For additional information, visit ProSci's [Terms and Conditions Page](#).