

## INF2 Antibody

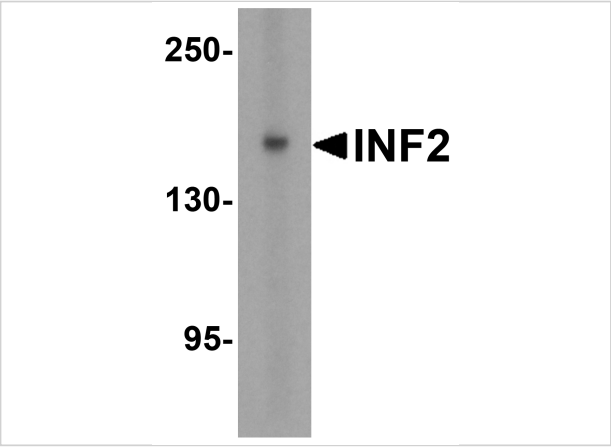
CATALOG NUMBER: 8631

### Specifications

Host Species	Rabbit
Species Reactivity	Human
Homology	Predicted species reactivity based on immunogen sequence: Mouse: (100%), Frog (71%)
Immunogen	INF2 antibody was raised against a peptide corresponding to 14 amino acids near the amino terminus of human INF2.
Conjugate	Unconjugated
Tested Applications	ELISA, WB
User Note	Optimal dilutions for each application to be determined by the researcher.
Specificity	INF2 Antibody is predicted to not cross-react with other INF1.
Predicted Molecular Weight	Predicted: 137 kDa Observed: 160 kDa

### Properties

Purification	INF2 Antibody is affinity chromatography purified via peptide column.
Clonality	Polyclonal
Isotype	IgG
Physical State	Liquid
Buffer	INF2 Antibody is supplied in PBS containing 0.02% sodium azide.
Concentration	1 mg/mL
Storage Conditions	INF2 antibody can be stored at 4°C for three months and -20°C, stable for up to one year. As with all antibodies care should be taken to avoid repeated freeze thaw cycles. Antibodies should not be exposed to prolonged high temperatures.



INF2 Antibody 1

Western blot analysis of INF2 in (A) human tonsil and (B) rat stomach tissue lysate with INF2 antibody at 1 µg/mL.

Disclaimer

Disclaimer	Optimal dilutions/concentrations should be determined by the end user. The information provided is a guideline for product use. This product is for research use only.
------------	--

For research use only. For additional information, visit ProSci's [Terms and Conditions Page](#).