

## RNF26 Antibody

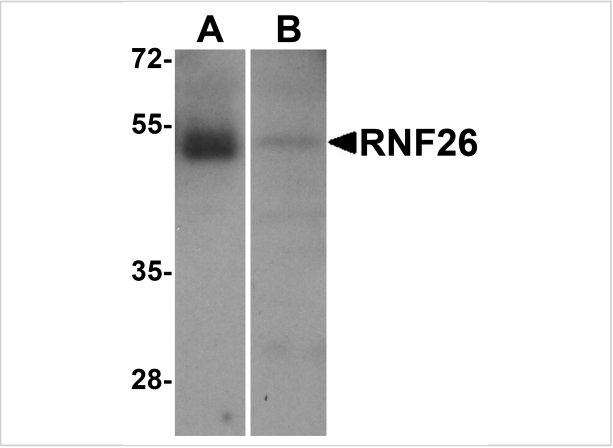
CATALOG NUMBER: 8549

### Specifications

Host Species	Rabbit
Species Reactivity	Human, Rat
Homology	Predicted species reactivity based on immunogen sequence: Mouse: (79%)
Immunogen	RNF26 antibody was raised against a peptide corresponding to 14 amino acids near the amino terminus of human RNF26.
Conjugate	Unconjugated
Tested Applications	ELISA, WB
User Note	Optimal dilutions for each application to be determined by the researcher.
Specificity	RNF26 Antibody is predicted to not cross-react with other CXCR family members.
Predicted Molecular Weight	Predicted: 48 kDa Observed: 50 kDa

### Properties

Purification	RNF26 Antibody is affinity chromatography purified via peptide column.
Clonality	Polyclonal
Isotype	IgG
Physical State	Liquid
Buffer	RNF26 Antibody is supplied in PBS containing 0.02% sodium azide.
Concentration	1 mg/mL
Storage Conditions	RNF26 antibody can be stored at 4°C for three months and -20°C, stable for up to one year. As with all antibodies care should be taken to avoid repeated freeze thaw cycles. Antibodies should not be exposed to prolonged high temperatures.



RNF26 Antibody 1

Western blot analysis of RNF26 in (A) human tonsil and (B) rat stomach tissue lysate with RNF26 antibody at 1 µg/mL.

Disclaimer

Disclaimer	Optimal dilutions/concentrations should be determined by the end user. The information provided is a guideline for product use. This product is for research use only.
------------	--

For research use only. For additional information, visit ProSci's [Terms and Conditions Page](#).