

RICK Antibody

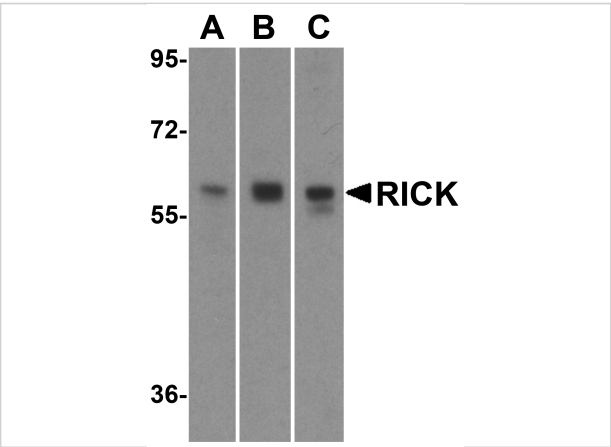
CATALOG NUMBER: 2075

Specifications

| | |
|----------------------------|--|
| Host Species | Rabbit |
| Species Reactivity | Human, Mouse, Rat |
| Homology | Predicted species reactivity based on immunogen sequence: Bovine: (95%) |
| Immunogen | RICK antibody was raised against a peptide corresponding to 20 amino acids near the amino terminus of human RICK. The immunogen is located within the first 50 amino acids of RICK. |
| Conjugate | Unconjugated |
| Tested Applications | ELISA, ICC, IF, WB |
| User Note | Optimal dilutions for each application to be determined by the researcher. |
| Predicted Molecular Weight | Predicted: 59 kDa Observed: 59 kDa |

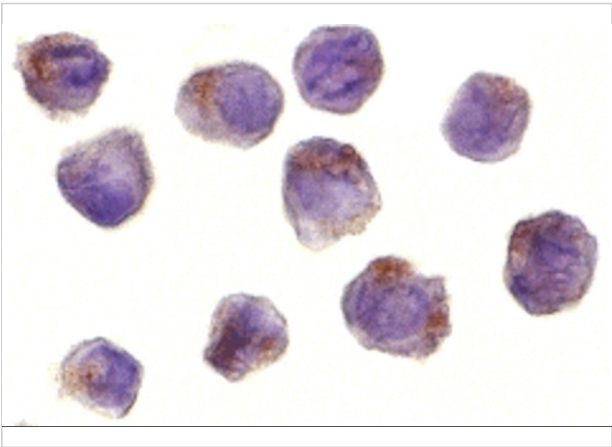
Properties

| | |
|--------------------|---|
| Purification | RICK Antibody is affinity chromatography purified via peptide column. |
| Clonality | Polyclonal |
| Isotype | IgG |
| Physical State | Liquid |
| Buffer | RICK Antibody is supplied in PBS containing 0.02% sodium azide. |
| Concentration | 1 mg/ml |
| Storage Conditions | RICK antibody can be stored at 4°C up to one year. Antibodies should not be exposed to prolonged high temperatures. |



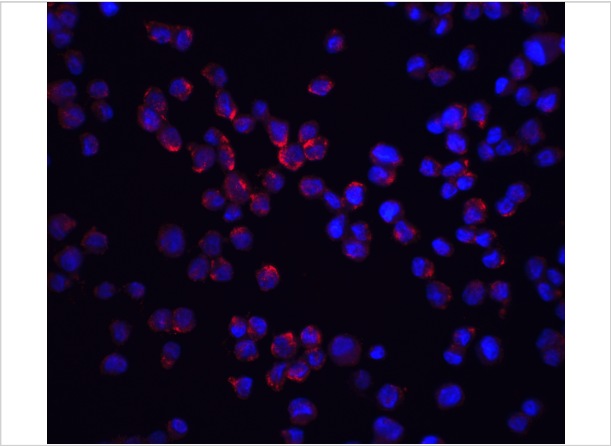
RICK Antibody 1

Western blot analysis of RICK in (A) HeLa, (B) Ramos and (C) EL4 cell lysate with RICK antibody at 1 µg/mL.



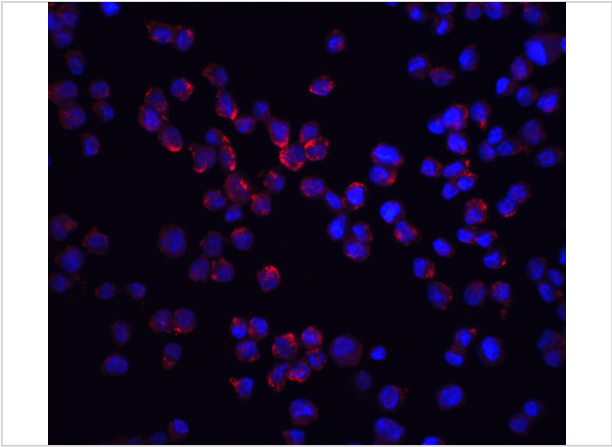
RICK Antibody 2

Immunocytochemistry of RICK in A431 cells with RICK antibody at 10 µg/mL.



RICK Antibody 3

Immunofluorescence of RICK in K562 cells with RICK antibody at 20 µg/mL.



RICK Antibody 4

Immunofluorescence of RICK in K562 cells with RICK antibody at 20 µg/mL.

Red: RICK Antibody (2075)
Blue: DAPI staining

Disclaimer

| | |
|-------------------|--|
| Disclaimer | Optimal dilutions/concentrations should be determined by the end user. The information provided is a guideline for product use. This product is for research use only. |
|-------------------|--|

For research use only. For additional information, visit ProSci's [Terms and Conditions Page](#).