

MLXIP Antibody

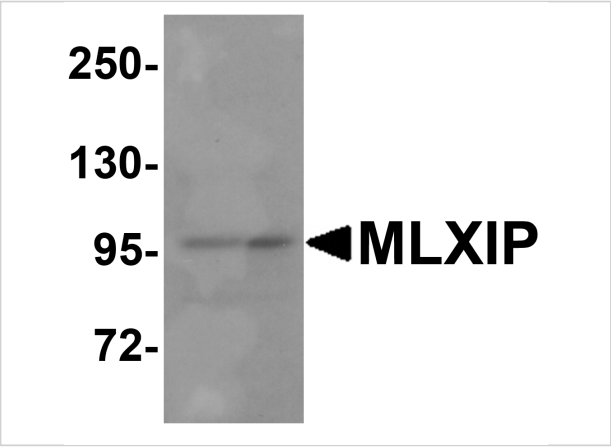
CATALOG NUMBER: 8547

Specifications

| | |
|----------------------------|---|
| Host Species | Rabbit |
| Species Reactivity | Human |
| Homology | Predicted species reactivity based on immunogen sequence: Mouse: (95%) |
| Immunogen | MLXIP antibody was raised against a peptide corresponding to 19 amino acids near the amino terminus of human MLXIP. |
| Conjugate | Unconjugated |
| Tested Applications | ELISA, WB |
| User Note | Optimal dilutions for each application to be determined by the researcher. |
| Predicted Molecular Weight | Predicted: 20 kDa Observed: 21 kDa |

Properties

| | |
|--------------------|---|
| Purification | MLXIP Antibody is affinity chromatography purified via peptide column. |
| Clonality | Polyclonal |
| Isotype | IgG |
| Physical State | Liquid |
| Buffer | MLXIP Antibody is supplied in PBS containing 0.02% sodium azide. |
| Concentration | 1 mg/mL |
| Storage Conditions | MLXIP antibody can be stored at 4°C for three months and -20°C, stable for up to one year. As with all antibodies care should be taken to avoid repeated freeze thaw cycles. Antibodies should not be exposed to prolonged high temperatures. |



MLXIP Antibody 1

Western blot analysis of MLXIP in MCF7 cell lysate with MLXIP antibody at 1 µg/mL.

Disclaimer

| | |
|------------|--|
| Disclaimer | Optimal dilutions/concentrations should be determined by the end user. The information provided is a guideline for product use. This product is for research use only. |
|------------|--|

For research use only. For additional information, visit ProSci's [Terms and Conditions Page](#).