

SLC30A8 Antibody

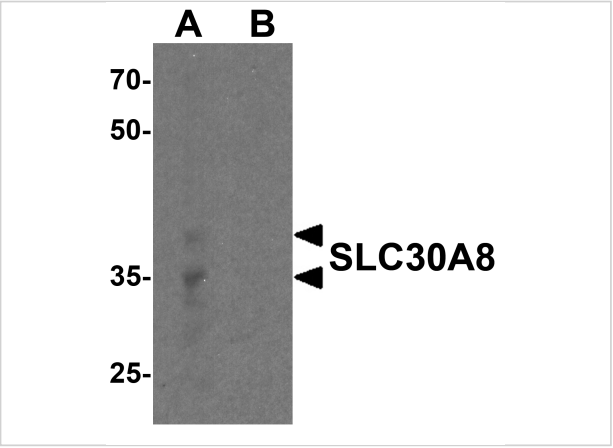
CATALOG NUMBER: 8485

Specifications

Host Species	Rabbit
Species Reactivity	Human
Immunogen	SLC30A8 antibody was raised against a peptide corresponding to 14 amino acids near the amino terminus of human SLC30A8.
Conjugate	Unconjugated
Tested Applications	ELISA, IF, IHC-P, WB
User Note	Optimal dilutions for each application to be determined by the researcher.
Specificity	Two isoforms of SLC30A8 are known to exist; this antibody will detect both isoforms. This SLC30A8 antibody is predicted to not cross-react with other members of the SLC30 protein family.
Predicted Molecular Weight	Predicted: 35, 41 kDa Observed: 35, 41 kDa

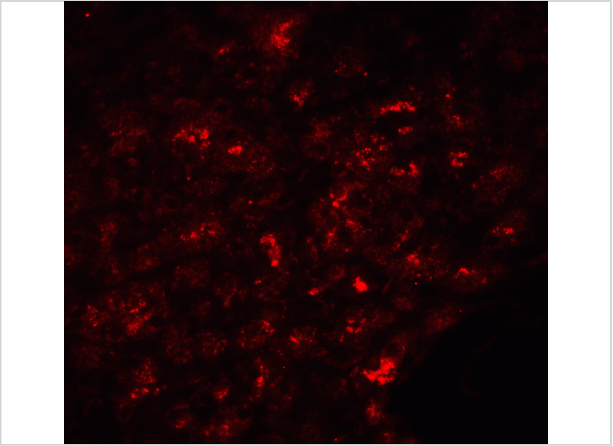
Properties

Purification	SLC30A8 Antibody is affinity chromatography purified via peptide column.
Clonality	Polyclonal
Isotype	IgG
Physical State	Liquid
Buffer	SLC30A8 Antibody is supplied in PBS containing 0.02% sodium azide.
Concentration	1 mg/mL
Storage Conditions	SLC30A8 antibody can be stored at 4°C for three months and -20°C, stable for up to one year. As with all antibodies care should be taken to avoid repeated freeze thaw cycles. Antibodies should not be exposed to prolonged high temperatures.



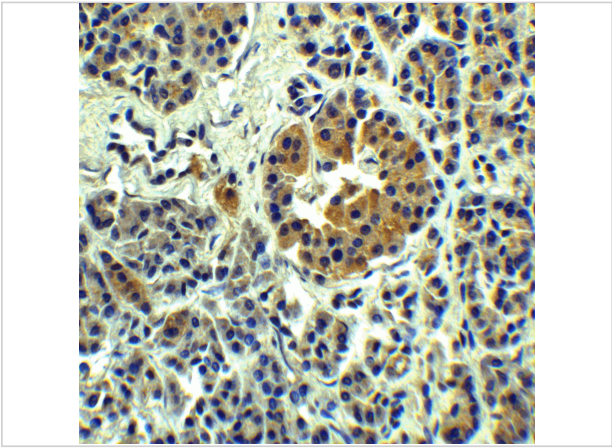
SLC30A8 Antibody 1

Western blot analysis of SLC30A8 in human pancreas tissue lysate with SLC30A8 antibody at 1 µg/ml in (A) the absence and (B) the presence of blocking peptide



SLC30A8 Antibody 3

Immunofluorescence of SLC30A8 in human pancreas tissue with SLC30A8 Antibody at 20 µg/mL.



SLC30A8 Antibody 2

Immunohistochemistry of SLC30A8 in human pancreas tissue with SLC30A8 Antibody at 5 µg/mL.

Disclaimer

Disclaimer	Optimal dilutions/concentrations should be determined by the end user. The information provided is a guideline for product use. This product is for research use only.
------------	--

For research use only. For additional information, visit ProSci's [Terms and Conditions Page](#).