

SOX10 Antibody

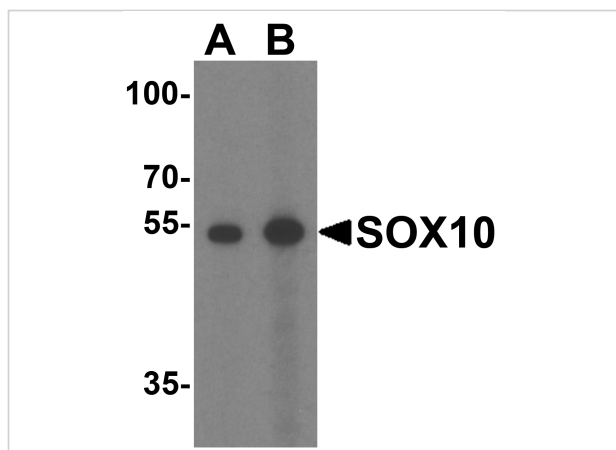
CATALOG NUMBER: 8481

Specifications

Host Species	Rabbit
Species Reactivity	Human, Mouse, Rat
Homology	Predicted species reactivity based on immunogen sequence: Pig: (100%), Chicken: (89%), Goat: (100%)
Immunogen	SOX10 antibody was raised against a peptide corresponding to 18 amino acids near the amino terminus of human SOX10.
Conjugate	Unconjugated
Tested Applications	ELISA, IF, IHC-P, WB
User Note	Optimal dilutions for each application to be determined by the researcher.
Specificity	SOX10 Antibody is predicted to not cross-react with other SOX family members.
Predicted Molecular Weight	Predicted: 51 kDa Observed: 54 kDa

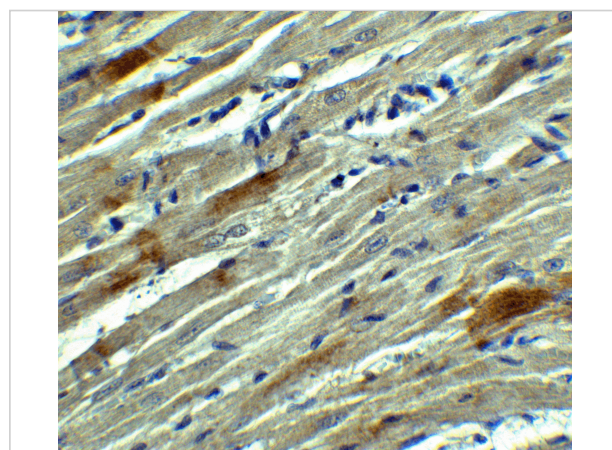
Properties

Purification	SOX10 Antibody is affinity chromatography purified via peptide column.
Clonality	Polyclonal
Isotype	IgG
Physical State	Liquid
Buffer	SOX10 Antibody is supplied in PBS containing 0.02% sodium azide.
Concentration	1 mg/mL
Storage Conditions	SOX10 antibody can be stored at 4°C for three months and -20°C, stable for up to one year. As with all antibodies care should be taken to avoid repeated freeze thaw cycles. Antibodies should not be exposed to prolonged high temperatures.



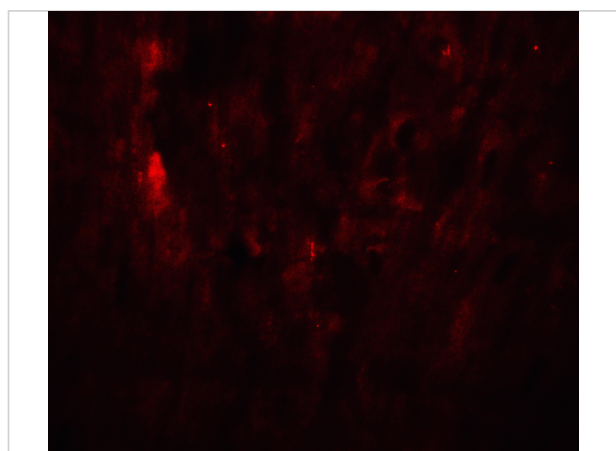
SOX10 Antibody 1

Western blot analysis of SOX10 in rat heart tissue lysate with SOX10 antibody at (A) 1 and (B) 2 $\mu\text{g/mL}$.



SOX10 Antibody 2

Immunohistochemistry of SOX10 in rat heart tissue with SOX10 Antibody at 5 $\mu\text{g/mL}$.



SOX10 Antibody 3

Immunofluorescence of SOX10 in rat heart tissue with SOX10 Antibody at 20 $\mu\text{g/mL}$.

Disclaimer

Disclaimer

Optimal dilutions/concentrations should be determined by the end user. The information provided is a guideline for product use. This product is for research use only.

For research use only. For additional information, visit ProSci's [Terms and Conditions Page](#).