

CHADL Antibody

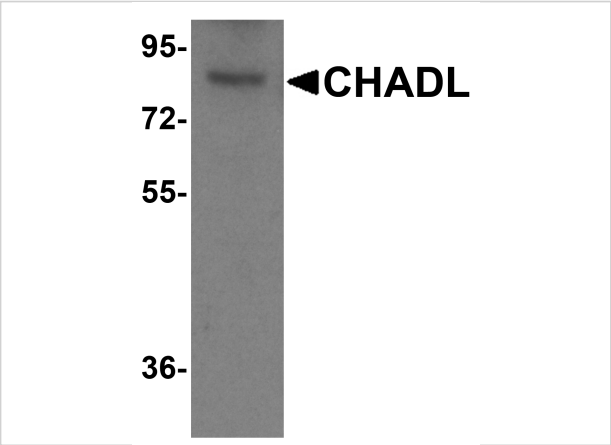
CATALOG NUMBER: 8423

Specifications

Host Species	Rabbit
Species Reactivity	Human, Mouse, Rat
Immunogen	CHADL antibody was raised against a 19 amino acid peptide from near the carboxy terminus of human CHADL. The immunogen is located within the last 50 amino acids of CHADL.
Conjugate	Unconjugated
Tested Applications	ELISA, IF, IHC, WB
User Note	Optimal dilutions for each application to be determined by the researcher.
Specificity	CHADL antibody is human, mouse and rat reactive. CHADL antibody is predicted to not cross-react with Chondroadherin protein.
Predicted Molecular Weight	Predicted: 84 kDa Observed: 86 kDa

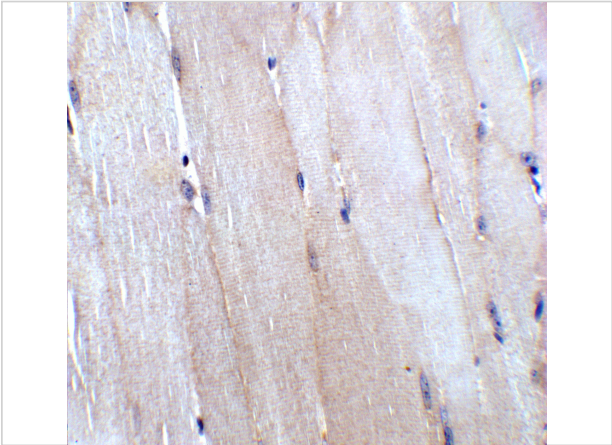
Properties

Purification	CHADL Antibody is affinity chromatography purified via peptide column.
Clonality	Polyclonal
Isotype	IgG
Physical State	Liquid
Buffer	CHADL Antibody is supplied in PBS containing 0.02% sodium azide.
Concentration	1 mg/mL
Storage Conditions	CHADL antibody can be stored at 4°C for three months and -20°C, stable for up to one year.



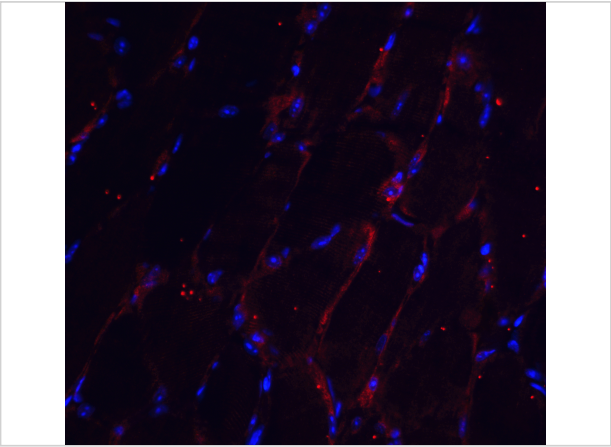
CHADL Antibody 1

Western blot analysis of CHADL in mouse kidney tissue lysate with CHADL antibody at (A) 1 and (B) 2 µg/ml.



CHADL Antibody 2

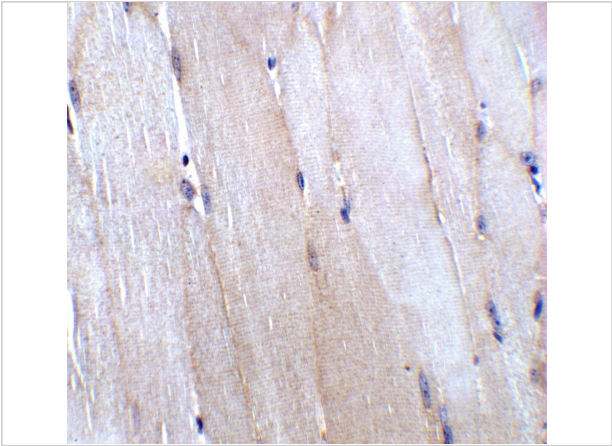
Immunohistochemistry of CHADL in mouse skeletal muscle tissue with CHADL antibody at 5 µg/mL.



CHADL Antibody 3

Immunofluorescence of CHADL in mouse skeletal muscle tissue with CHADL antibody at 20 µg/mL.

Red: CHADL Antibody (8423)
Blue: DAPI staining



CHADL Antibody 4

Immunohistochemistry of CHADL in mouse skeletal muscle tissue with CHADL antibody at 5 µg/mL.

Disclaimer

Disclaimer	Optimal dilutions/concentrations should be determined by the end user. The information provided is a guideline for product use. This product is for research use only.
------------	--

For research use only. For additional information, visit ProSci's [Terms and Conditions Page](#).