

SLC36A2 Antibody

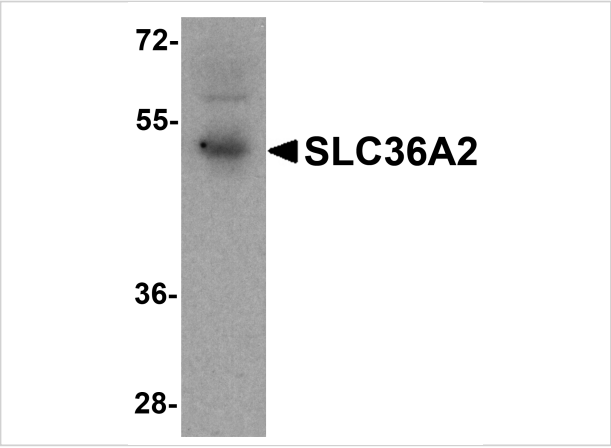
CATALOG NUMBER: 8341

Specifications

Host Species	Rabbit
Species Reactivity	Human
Immunogen	SLC36A2 antibody was raised against a 15 amino acid peptide near the amino terminus of human SLC36A2. The immunogen is located within amino acids 30 - 80 of SLC36A2.
Conjugate	Unconjugated
Tested Applications	ELISA, WB
User Note	Optimal dilutions for each application to be determined by the researcher.
Specificity	SLC36A2 antibody is human specific. SLC36A2 is predicted to not cross-react with other members of the SLC36 protein family.
Predicted Molecular Weight	Predicted: 53 kDa Observed: 52 kDa

Properties

Purification	SLC36A2 antibody is affinity chromatography purified via peptide column.
Clonality	Polyclonal
Isotype	IgG
Physical State	Liquid
Buffer	SLC36A2 antibody is supplied in PBS containing 0.02% sodium azide.
Concentration	1 mg/mL
Storage Conditions	SLC36A2 antibody can be stored at 4°C for three months and -20°C, stable for up to one year.



SLC36A2 Antibody 1

Western blot analysis of SLC36A2 in human stomach tissue lysate with SLC36A2 antibody at1 µg/ml.

Disclaimer

Disclaimer	Optimal dilutions/concentrations should be determined by the end user. The information provided is a guideline for product use. This product is for research use only.
------------	--

For research use only. For additional information, visit ProSci's [Terms and Conditions Page](#).