

INPP4B Antibody

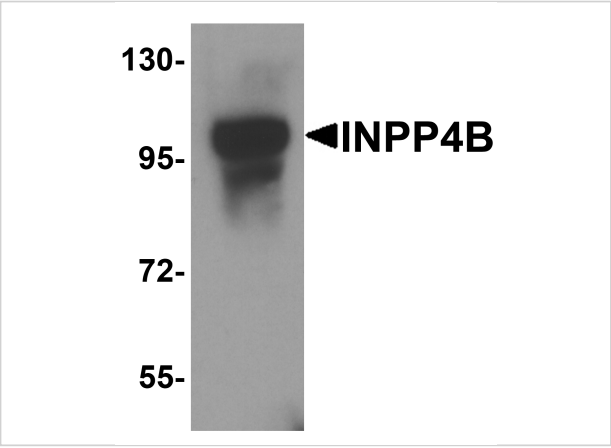
CATALOG NUMBER: 8339

Specifications

Host Species	Rabbit
Species Reactivity	Human, Mouse, Rat
Immunogen	INPP4B antibody was raised against a 17 amino acid peptide near the amino terminus of human INPP4B. The immunogen is located within the last 50 amino acids of INPP4B.
Conjugate	Unconjugated
Tested Applications	ELISA, ICC, WB
User Note	Optimal dilutions for each application to be determined by the researcher.
Specificity	INPP4B antibody is human, mouse and rat reactive. At least two isoforms of INPP4B are known to exist; this antibody only detects the longer isoform. INPP4B antibody is predicted to not cross-react with INPP4A.
Predicted Molecular Weight	Predicted: 102 kDa Observed: 100 kDa

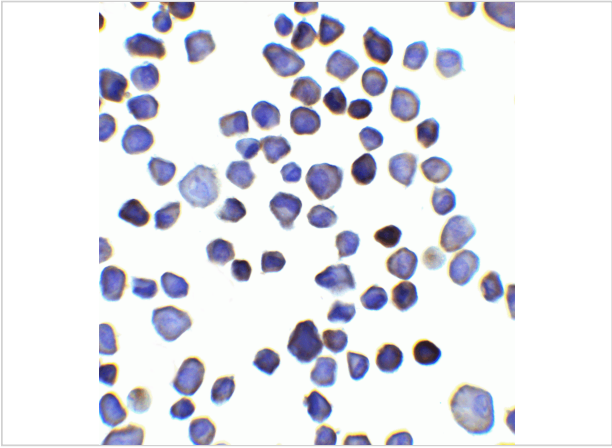
Properties

Purification	INPP4B antibody is affinity chromatography purified via peptide column.
Clonality	Polyclonal
Isotype	IgG
Physical State	Liquid
Buffer	INPP4B antibody is supplied in PBS containing 0.02% sodium azide.
Concentration	1 mg/mL
Storage Conditions	INPP4B antibody can be stored at 4°C for three months and -20°C, stable for up to one year.



INPP4B Antibody 1

Western blot analysis of INPP4B in 3T3 cell lysate with INPP4B antibody at 1 µg/ml.



INPP4B Antibody 2

Immunocytochemistry of INPP4B in 3T3 cells with INPP4B antibody at 2.5 µg/ml.

Disclaimer

Disclaimer	Optimal dilutions/concentrations should be determined by the end user. The information provided is a guideline for product use. This product is for research use only.
------------	--

For research use only. For additional information, visit ProSci's [Terms and Conditions Page](#).