

DEPDC1B Antibody

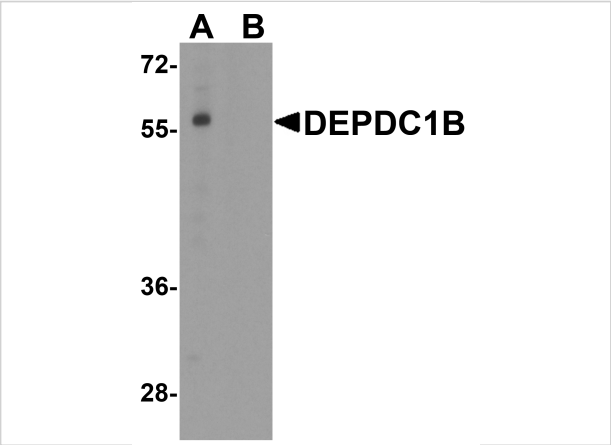
CATALOG NUMBER: 8283

Specifications

Host Species	Rabbit
Species Reactivity	Human
Homology	Predicted species reactivity based on immunogen sequence: Mouse: (94%), Chicken: (88%)
Immunogen	DEPDC1B antibody was raised against a 19 amino acid peptide near the carboxy terminus of human DEPDC1B. The immunogen is located within the last 50 amino acids of DEPDC1B.
Conjugate	Unconjugated
Tested Applications	ELISA, IHC-P, WB
User Note	Optimal dilutions for each application to be determined by the researcher.
Specificity	DEPDC1B antibody is human specific. At least two isoforms are known to exist; this antibody will only detect the largest isoform. DEPDC1B antibody is predicted to not cross-react with DEPDC1A.
Predicted Molecular Weight	Predicted: 58 kDa Observed: 57 kDa

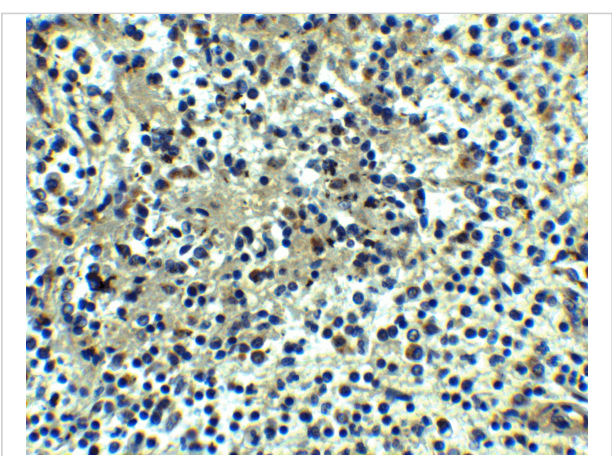
Properties

Purification	DEPDC1B antibody is affinity chromatography purified via peptide column.
Clonality	Polyclonal
Isotype	IgG
Physical State	Liquid
Buffer	DEPDC1B antibody is supplied in PBS containing 0.02% sodium azide.
Concentration	1 mg/mL
Storage Conditions	DEPDC1B antibody can be stored at 4°C for three months and -20°C, stable for up to one year.



DEPDC1B Antibody 1

Western blot analysis of DEPDC1B in K562 cell lysate with DEPDC1B antibody at 1 µg/ml in (A) the absence and (B) the presence of blocking peptide.



DEPDC1B Antibody 2

Immunohistochemistry of DEPDC1B in human spleen tissue with DEPDC1B antibody at 5 µg/ml.

Disclaimer

Disclaimer	Optimal dilutions/concentrations should be determined by the end user. The information provided is a guideline for product use. This product is for research use only.
------------	------------------------------------------------------------------------------------------------------------------------------------------------------------------------

For research use only. For additional information, visit ProSci's [Terms and Conditions Page](#).