

## PMEPA1 Antibody

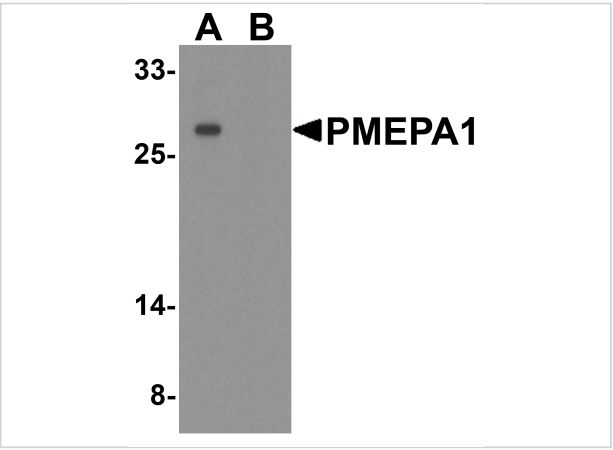
CATALOG NUMBER: 8261

### Specifications

Host Species	Rabbit
Species Reactivity	Human, Mouse, Rat
Immunogen	PMEPA1 antibody was raised against a 16 amino acid peptide near the center of human PMEPA1. The immunogen is located within amino acids 160 - 210 of PMEPA1.
Conjugate	Unconjugated
Tested Applications	ELISA, IHC-P, WB
User Note	Optimal dilutions for each application to be determined by the researcher.
Specificity	PMEPA1 antibody is human, mouse and rat reactive. At least four isoforms are known to exist; this antibody will detect all of the isoforms.
Predicted Molecular Weight	Predicted: 26, 28, 32 kDa Observed: 27 kDa

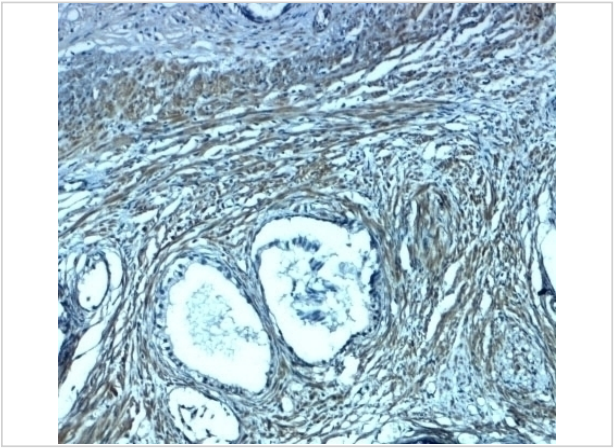
### Properties

Purification	PMEPA1 antibody is affinity chromatography purified via peptide column.
Clonality	Polyclonal
Isotype	IgG
Physical State	Liquid
Buffer	PMEPA1 antibody is supplied in PBS containing 0.02% sodium azide.
Concentration	1 mg/mL
Storage Conditions	PMEPA1 antibody can be stored at 4°C for three months and -20°C, stable for up to one year.



PMEPA1 Antibody 1

Western blot analysis of PMEPA1 in A549 cell lysate with PMEPA1 antibody at 1 µg/ml in (A) the absence and (B) the presence of blocking peptide.



PMEPA1 Antibody 2

Immunohistochemistry of PMEPA1 in human prostate tissue with PMEPA1 antibody at 2.5 µg/ml.

Disclaimer

Disclaimer	Optimal dilutions/concentrations should be determined by the end user. The information provided is a guideline for product use. This product is for research use only.
------------	--

For research use only. For additional information, visit ProSci's [Terms and Conditions Page](#).