



ProSci Incorporated
12170 Flint Place
Poway, CA 92064, USA
prosci-inc.com

P: +1 (888) 513-9525
Local: +1 (858) 513-2638
Fax: +1 (858) 513-2692

customercare@prosci-inc.com
techsupport@prosci-inc.com

Trophinin Antibody

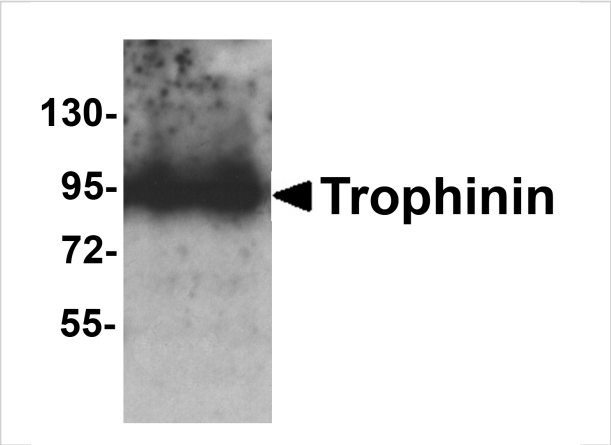
CATALOG NUMBER: 8245

Specifications

Host Species	Rabbit
Species Reactivity	Human, Mouse, Rat
Immunogen	Trophinin antibody was raised against a 16 amino acid peptide near the amino terminus of human Trophinin. The immunogen is located within amino acids 390 - 440 of Trophinin.
Conjugate	Unconjugated
Tested Applications	ELISA, IF, IHC-P, WB
User Note	Optimal dilutions for each application to be determined by the researcher.
Specificity	Trophinin antibody is human, mouse and rat reactive. Multiple isoforms of Trophinin are known to exist.
Predicted Molecular Weight	Predicted: 78, 157 kDa Observed: 94 kDa

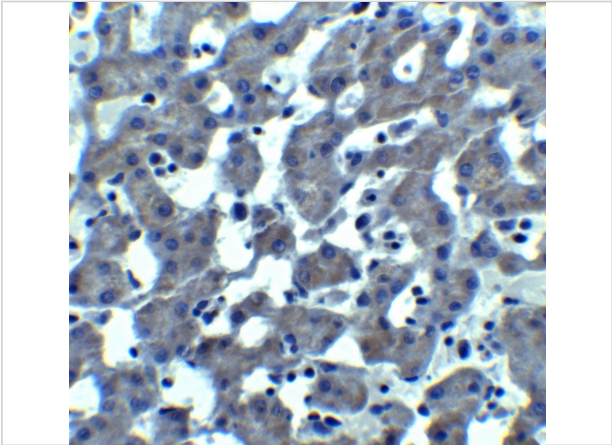
Properties

Purification	Trophinin antibody is affinity chromatography purified via peptide column.
Clonality	Polyclonal
Isotype	IgG
Physical State	Liquid
Buffer	Trophinin antibody is supplied in PBS containing 0.02% sodium azide.
Concentration	1 mg/mL
Storage Conditions	Trophinin antibody can be stored at 4°C for three months and -20°C, stable for up to one year.



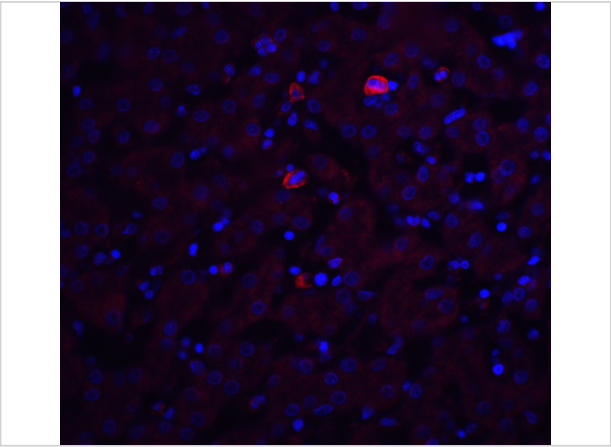
Trophinin Antibody 1

Western blot analysis of Trophinin in rat liver tissue lysate with Trophinin antibody at 1 µg/ml.



Trophinin Antibody 2

Immunohistochemistry of TROPHININ in mouse liver tissue with TROPHININ antibody at 10 µg/ml.



Trophinin Antibody 3

Immunofluorescence of Trophinin in mouse liver tissue with Trophinin antibody at 20 µg/ml.

Red: Trophinin Antibody (8245)
Blue: DAPI staining

Disclaimer

Disclaimer	Optimal dilutions/concentrations should be determined by the end user. The information provided is a guideline for product use. This product is for research use only.
-------------------	--

For research use only. For additional information, visit ProSci's [Terms and Conditions Page](#).