



ProSci Incorporated
12170 Flint Place
Poway, CA 92064, USA
prosci-inc.com

P: +1 (888) 513-9525
Local: +1 (858) 513-2638
Fax: +1 (858) 513-2692

customercare@prosci-inc.com
techsupport@prosci-inc.com

LRRC8A Antibody

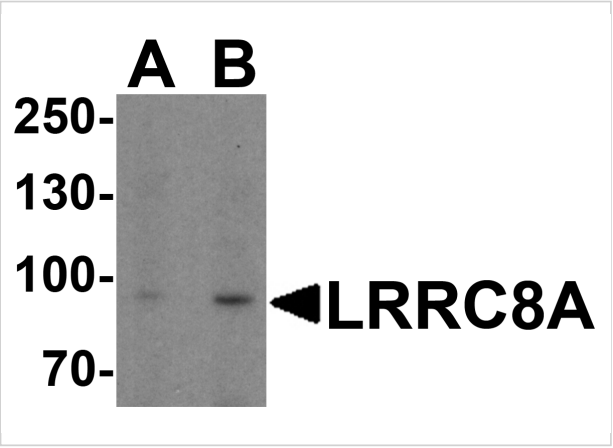
CATALOG NUMBER: 8235

Specifications

Host Species	Rabbit
Species Reactivity	Human, Mouse, Rat
Immunogen	LRRC8A antibody was raised against a 15 amino acid peptide near the amino terminus of human LRRC8A. The immunogen is located within amino acids 60 - 110 of LRRC8A.
Conjugate	Unconjugated
Tested Applications	ELISA, IHC-P, WB
User Note	Optimal dilutions for each application to be determined by the researcher.
Specificity	LRRC8A antibody is human, mouse and rat reactive.
Predicted Molecular Weight	Predicted: 89 kDa Observed: 95 kDa

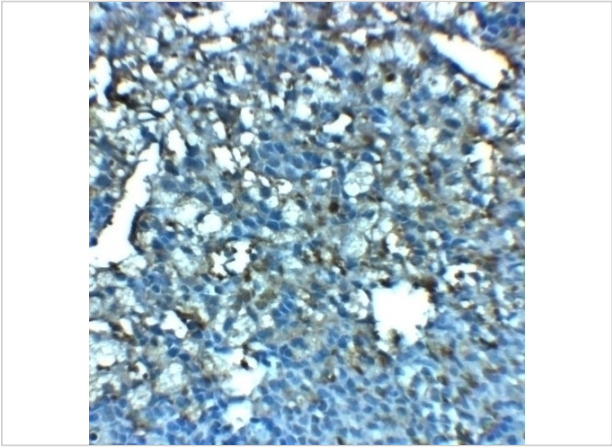
Properties

Purification	LRRC8A antibody is affinity chromatography purified via peptide column.
Clonality	Polyclonal
Isotype	IgG
Physical State	Liquid
Buffer	LRRC8A antibody is supplied in PBS containing 0.02% sodium azide.
Concentration	1 mg/mL
Storage Conditions	LRRC8A antibody can be stored at 4°C for three months and -20°C, stable for up to one year.



LRRC8A Antibody 1

Western blot analysis of LRRC8A in EL4 cell lysate with LRRC8A antibody at (A) 1 and (B) 2 $\mu\text{g}/\text{mL}$.



LRRC8A Antibody 2

Immunohistochemistry of LRRC8A in rat spleen tissue with LRRC8A antibody at 2.5 $\mu\text{g}/\text{mL}$.

Disclaimer

Disclaimer	Optimal dilutions/concentrations should be determined by the end user. The information provided is a guideline for product use. This product is for research use only.
------------	--

For research use only. For additional information, visit ProSci's [Terms and Conditions Page](#).