

## IZUMO1 Antibody

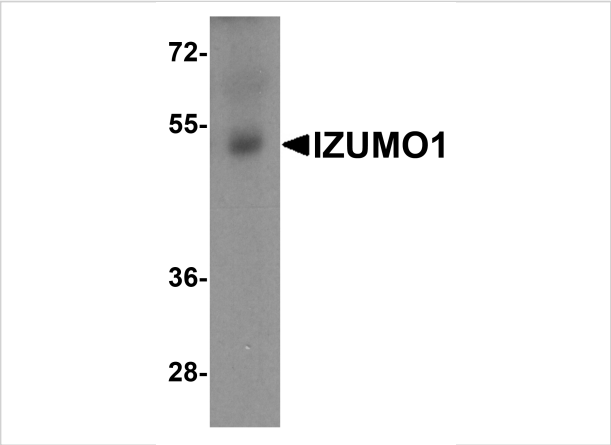
CATALOG NUMBER: 8233

### Specifications

<b>Host Species</b>	Rabbit
<b>Species Reactivity</b>	Human
<b>Homology</b>	Predicted species reactivity based on immunogen sequence: Rat: (82%), Mouse: (81%)
<b>Immunogen</b>	IZUMO1 antibody was raised against an 18 amino acid peptide near the center of human IZUMO1. The immunogen is located within amino acids 170 - 220 of IZUMO1.
<b>Conjugate</b>	Unconjugated
<b>Tested Applications</b>	ELISA, IHC-P, WB
<b>User Note</b>	Optimal dilutions for each application to be determined by the researcher.
<b>Specificity</b>	IZUMO1 antibody is human specific. At least four isoforms of IZUMO1 are known to exist; this antibody will detect the two longest isoforms.
<b>Predicted Molecular Weight</b>	Predicted: 35, 39, 42 kDa Observed: 52 kDa

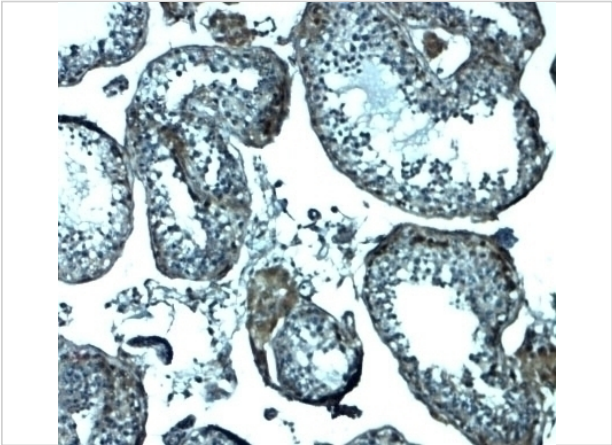
### Properties

<b>Purification</b>	IZUMO1 antibody is affinity chromatography purified via peptide column.
<b>Clonality</b>	Polyclonal
<b>Isotype</b>	IgG
<b>Physical State</b>	Liquid
<b>Buffer</b>	IZUMO1 antibody is supplied in PBS containing 0.02% sodium azide.
<b>Concentration</b>	1 mg/mL
<b>Storage Conditions</b>	IZUMO1 antibody can be stored at 4°C for three months and -20°C, stable for up to one year.



IZUMO1 Antibody 1

Western blot analysis of IZUMO1 in human testis tissue lysate with IZUMO1 antibody at 1 µg/ml.



IZUMO1 Antibody 2

Immunohistochemistry of IZUMO1 in human testis tissue with IZUMO1 antibody at 2.5 µg/mL.

Disclaimer

Disclaimer	Optimal dilutions/concentrations should be determined by the end user. The information provided is a guideline for product use. This product is for research use only.
------------	--

For research use only. For additional information, visit ProSci's [Terms and Conditions Page](#).