

LSD1 Antibody

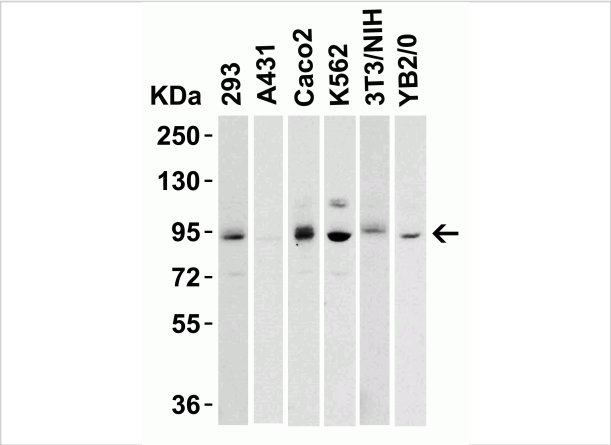
CATALOG NUMBER: 8223

Specifications

| | |
|----------------------------|--|
| Host Species | Rabbit |
| Species Reactivity | Human, Mouse, Rat |
| Immunogen | Anti-LSD1 antibody (8223) was raised against a peptide corresponding to 19 amino acids near the amino terminus of human LSD1. The immunogen is located within amino acids 90-140 of LSD1. |
| Conjugate | Unconjugated |
| Tested Applications | ELISA, IHC-P, WB |
| User Note | Optimal dilutions for each application to be determined by the researcher. |
| Specificity | At least two isoforms of LSD1 are known to exist; this antibody detects both. |
| Predicted Molecular Weight | Predicted: 93kD Observed: 93 kD |

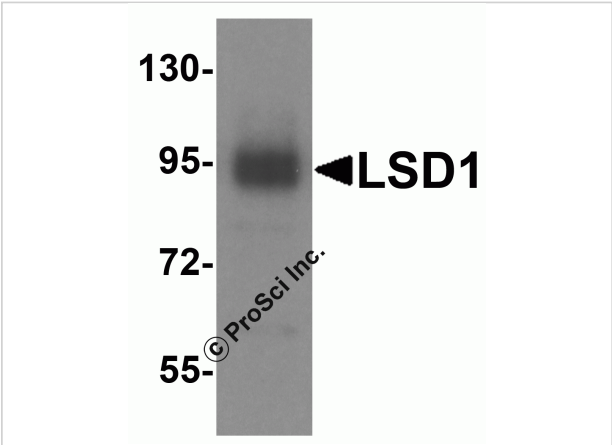
Properties

| | |
|--------------------|---|
| Purification | LSD1 antibody is affinity chromatography purified via peptide column. |
| Clonality | Polyclonal |
| Isotype | IgG |
| Physical State | Liquid |
| Buffer | LSD1 antibody is supplied in PBS containing 0.02% sodium azide. |
| Concentration | 1 mg/mL |
| Storage Conditions | LSD1 antibody can be stored at 4°C for three months and -20°C, stable for up to one year. |



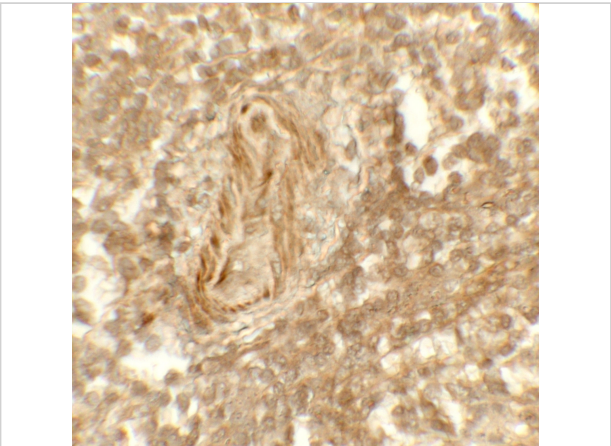
LSD1 Antibody 1

Figure 1 Western Blot Validation in Cell Lines
 Loading: 15 µg of lysates per lane. Antibodies: LSD1 8223 (2 µg/mL), 1h incubation at RT in 5% NFDm/TBST. Secondary: Goat anti-rabbi...



LSD1 Antibody 2

Figure 2 Western Blot Validation in Human A549 Cell Line
 Loading: 15µg of lysates per lane. Antibodies: LSD1 8223 (1 µg/mL), 1h incubation at RT in 5% NFDm/TBST. Secondary: Goat ...



LSD1 Antibody 3

Figure 3 Immunohistochemistry Validation of LSD1 in Human Spleen Tissue
 Immunohistochemical analysis of paraffin-embedded human spleen tissue using anti-LSD1 antibody (8223) a...

Disclaimer

| | |
|-------------------|--|
| Disclaimer | Optimal dilutions/concentrations should be determined by the end user. The information provided is a guideline for product use. This product is for research use only. |
|-------------------|--|

For research use only. For additional information, visit ProSci's [Terms and Conditions Page](#).