

## PDIA1 Antibody

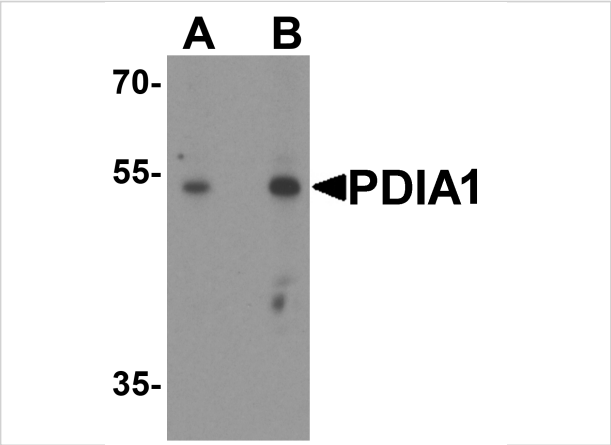
CATALOG NUMBER: 8213

### Specifications

Host Species	Rabbit
Species Reactivity	Human, Mouse, Rat
Homology	Predicted species reactivity based on immunogen sequence: Rabbit: (100%), Bovine: (100%), Chicken: (88%)
Immunogen	PDIA1 antibody was raised against a 17 amino acid peptide near the center of human PDIA1. The immunogen is located within amino acids 190 - 240 of PDIA1.
Conjugate	Unconjugated
Tested Applications	ELISA, IF, IHC-P, WB
User Note	Optimal dilutions for each application to be determined by the researcher.
Specificity	PDIA1 antibody is human, mouse and rat reactive.
Predicted Molecular Weight	Predicted: 54 kDa Observed: 54 kDa

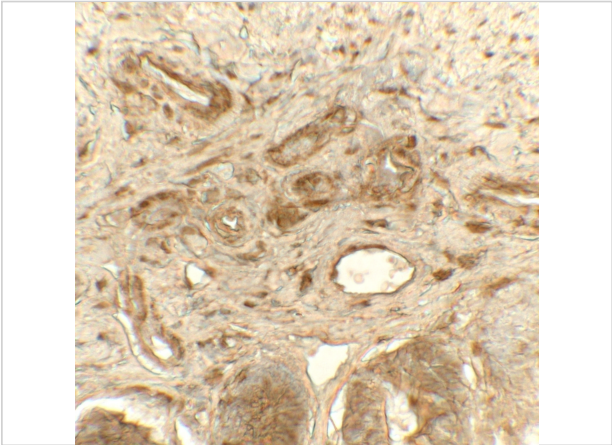
### Properties

Purification	PDIA1 antibody is affinity chromatography purified via peptide column.
Clonality	Polyclonal
Isotype	IgG
Physical State	Liquid
Buffer	PDIA1 antibody is supplied in PBS containing 0.02% sodium azide.
Concentration	1 mg/mL
Storage Conditions	PDIA1 antibody can be stored at 4°C for three months and -20°C, stable for up to one year.



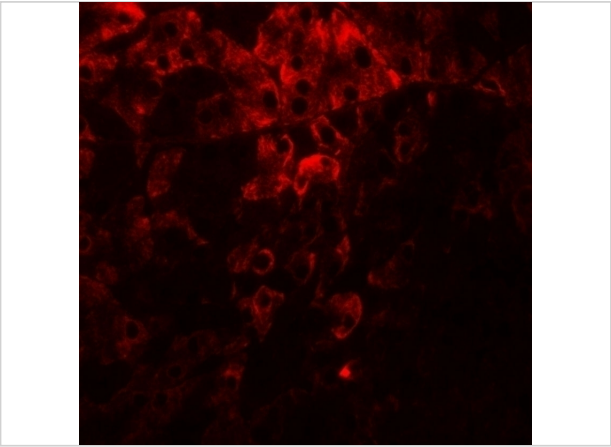
**PDIA1 Antibody 1**

Western blot analysis of PDIA1 in rat small intestine tissue lysate with PDIA1 antibody at (A) 1 and (B) 2  $\mu\text{g}/\text{mL}$ .



**PDIA1 Antibody 2**

Immunohistochemistry of PDIA1 in rat small intestine tissue with PDIA1 antibody at 5  $\mu\text{g}/\text{mL}$ .



**PDIA1 Antibody 3**

Immunofluorescence of PDIA1 in rat small intestine tissue with PDIA1 antibody at 20  $\mu\text{g}/\text{mL}$ .

**Disclaimer**

<b>Disclaimer</b>	Optimal dilutions/concentrations should be determined by the end user. The information provided is a guideline for product use. This product is for research use only.
-------------------	--

For research use only. For additional information, visit ProSci's [Terms and Conditions Page](#).