

RFX1 Antibody

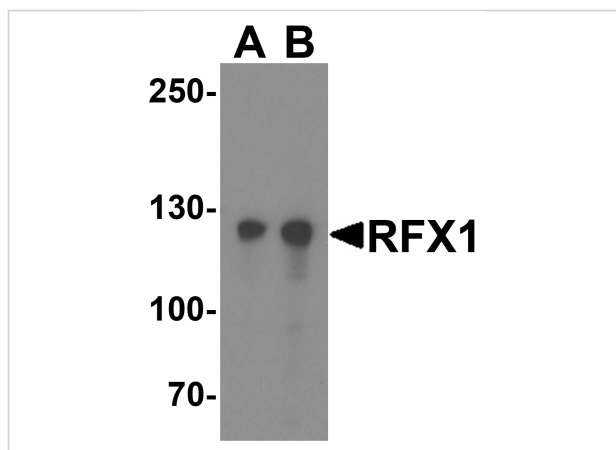
CATALOG NUMBER: 8199

Specifications

Host Species	Rabbit
Species Reactivity	Human
Homology	Predicted species reactivity based on immunogen sequence: Mouse: (89%)
Immunogen	RFX1 antibody was raised against an 18 amino acid peptide near the carboxy terminus of human RFX1. The immunogen is located within the last 50 amino acids of RFX1.
Conjugate	Unconjugated
Tested Applications	ELISA, ICC, IF, WB
User Note	Optimal dilutions for each application to be determined by the researcher.
Specificity	RFX1 antibody is human specific. At least two isoforms of RFX1 are known to exist; this antibody will detect both isoforms.
Predicted Molecular Weight	Predicted: 108 kDa Observed: 125 kDa

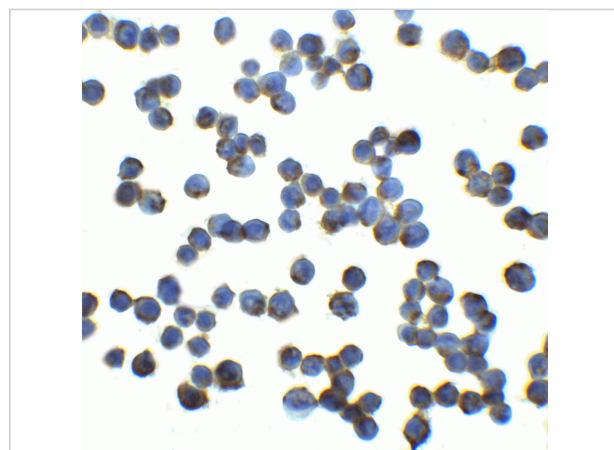
Properties

Purification	RFX1 antibody is affinity chromatography purified via peptide column.
Clonality	Polyclonal
Isotype	IgG
Physical State	Liquid
Buffer	RFX1 antibody is supplied in PBS containing 0.02% sodium azide.
Concentration	1 mg/mL
Storage Conditions	RFX1 antibody can be stored at 4°C for three months and -20°C, stable for up to one year.



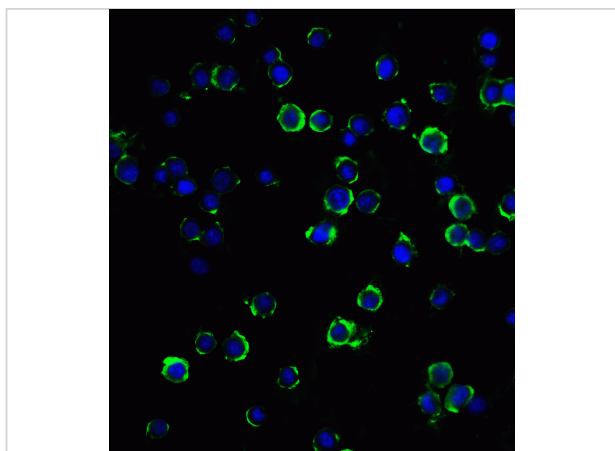
RFX1 Antibody 1

Western blot analysis of RFX1 in HeLa cell lysate with RFX1 antibody at (A) 1 and (B) 2 $\mu\text{g}/\text{mL}$.



RFX1 Antibody 2

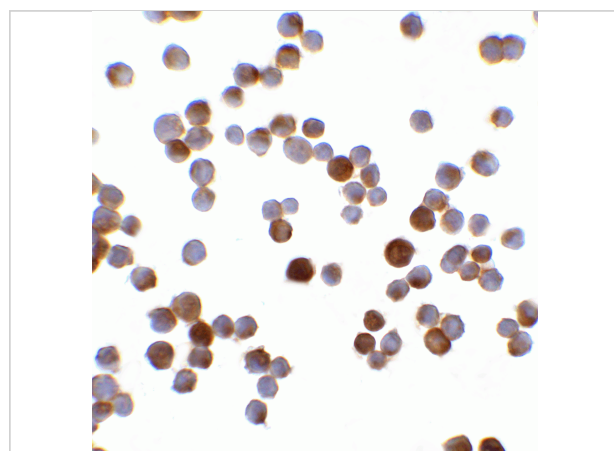
Immunocytochemistry of RFX1 in HeLa cells with RFX1 at 5 $\mu\text{g}/\text{mL}$.



RFX1 Antibody 3

Immunofluorescence of RFX1 in HeLa cells with RFX1 antibody at 20 $\mu\text{g}/\text{mL}$.

Green: RFX1 Antibody (8199)
Blue: DAPI staining



RFX1 Antibody 4

Immunocytochemistry of RFX1 in HeLa cells with RFX1 antibody at 5 $\mu\text{g}/\text{mL}$.

Disclaimer

Disclaimer

Optimal dilutions/concentrations should be determined by the end user. The information provided is a guideline for product use. This product is for research use only.

For research use only. For additional information, visit ProSci's [Terms and Conditions Page](#).