

RAET1E Antibody

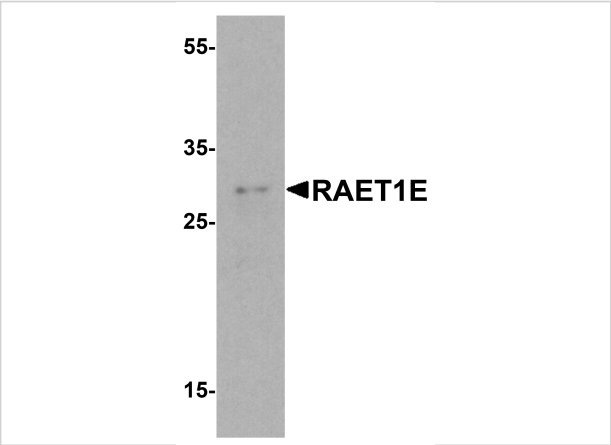
CATALOG NUMBER: 8193

Specifications

Host Species	Rabbit
Species Reactivity	Human, Mouse
Immunogen	RAET1E antibody was raised against an 18 amino acid peptide near the center of human RAET1E. The immunogen is located within amino acids 160 - 210 of RAET1E.
Conjugate	Unconjugated
Tested Applications	ELISA, ICC, WB
User Note	Optimal dilutions for each application to be determined by the researcher.
Specificity	RAET1E antibody is human and mouse reactive. At least four isoforms of RAET1E are known to exist; this antibody will detect all four.
Predicted Molecular Weight	Predicted: 29 kDa Observed: 29 kDa

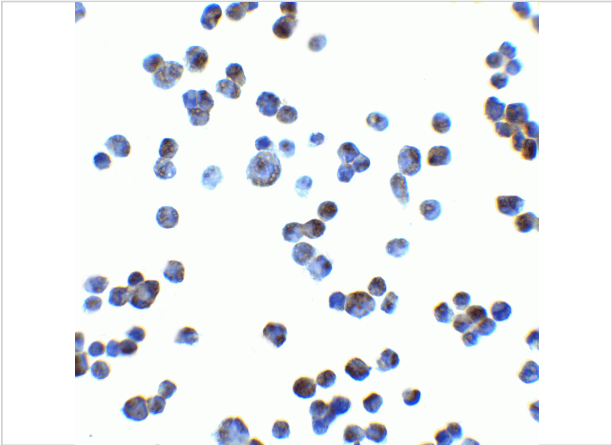
Properties

Purification	RAET1E antibody is affinity chromatography purified via peptide column.
Clonality	Polyclonal
Isotype	IgG
Physical State	Liquid
Buffer	RAET1E antibody is supplied in PBS containing 0.02% sodium azide.
Concentration	1 mg/mL
Storage Conditions	RAET1E antibody can be stored at 4°C for three months and -20°C, stable for up to one year.



RAET1E Antibody 1

Western blot analysis of RAET1E in EL4 cell lysate with RAET1E antibody at 1 µg/ml.



RAET1E Antibody 2

Immunocytochemistry of RAET1E in K562 cells with RAET1E at 2.5 µg/mL.

Disclaimer

Disclaimer	Optimal dilutions/concentrations should be determined by the end user. The information provided is a guideline for product use. This product is for research use only.
------------	--

For research use only. For additional information, visit ProSci's [Terms and Conditions Page](#).