

DNase II Antibody

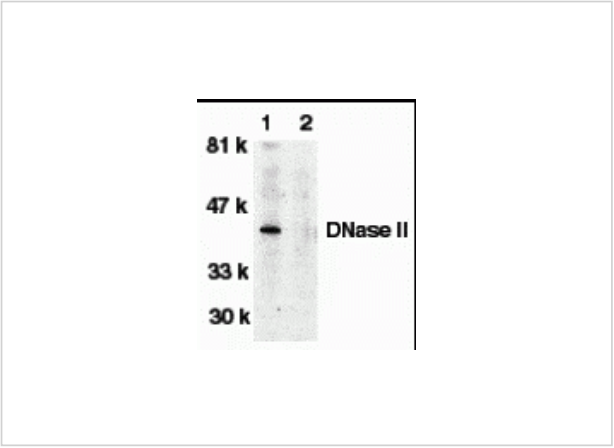
CATALOG NUMBER: 2059

Specifications

Host Species	Rabbit
Species Reactivity	Human
Immunogen	DNase II antibody was raised against a 14 amino acid peptide near the carboxy terminus of human DNase II. The immunogen is located within the last 50 amino acids of DNase II.
Conjugate	Unconjugated
Tested Applications	ELISA, IF, IHC-P, WB
User Note	Optimal dilutions for each application to be determined by the researcher.
Predicted Molecular Weight	Aprox: 40 kDa

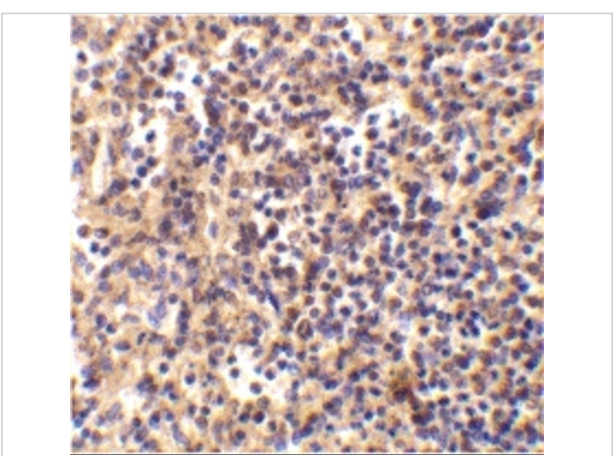
Properties

Purification	DNase II Antibody is affinity chromatography purified via peptide column.
Clonality	Polyclonal
Isotype	IgG
Physical State	Liquid
Buffer	DNase II Antibody is supplied in PBS containing 0.02% sodium azide.
Concentration	1 mg/ml
Storage Conditions	DNase II antibody can be stored at 4°C for three months and -20°C, stable for up to one year. As with all antibodies care should be taken to avoid repeated freeze thaw cycles. Antibodies should not be exposed to prolonged high temperatures.



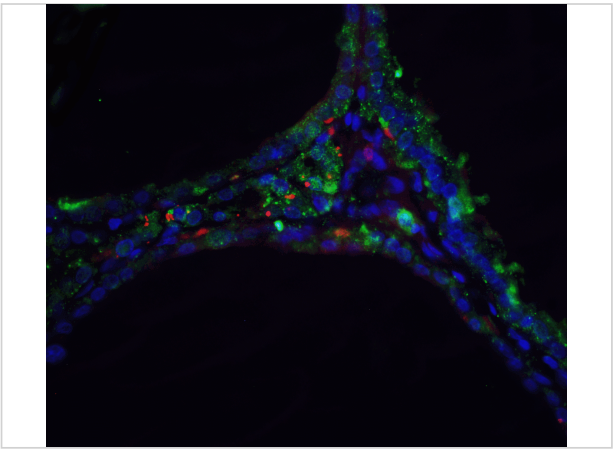
DNase II Antibody 1

Western blot analysis of DNase II in human spleen tissue lysate in the absence (lane 1) or presence (lane 2) of blocking peptide with DNase antibody II at 1:500 dilution.



DNase II Antibody 2

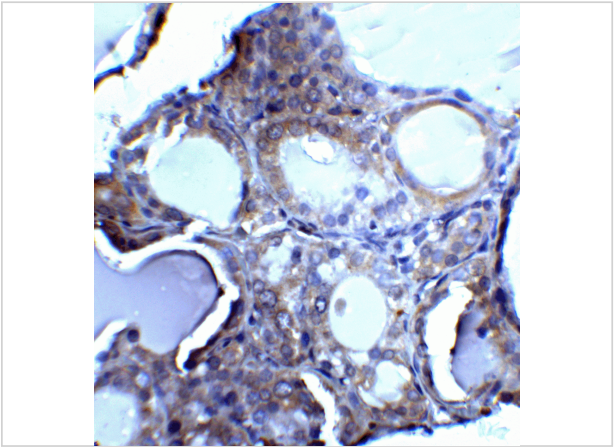
Immunohistochemistry of DNase II in human spleen tissue with DNase II antibody at 5 µg/mL.



DNase II Antibody 3

Immunofluorescence of DNase II in human spleen tissue with DNase II antibody at 5 µg/mL.

Green: DNase II antibody (2059)
Red: Phalloidin staining
Blue: DAPI staining



DNase II Antibody 4

Immunohistochemistry of DNase II in human spleen tissue with DNase II antibody at 5 µg/mL.

Disclaimer

Disclaimer

Optimal dilutions/concentrations should be determined by the end user. The information provided is a guideline for product use. This product is for research use only.

For research use only. For additional information, visit ProSci's [Terms and Conditions Page](#).