

SRSF3 Antibody

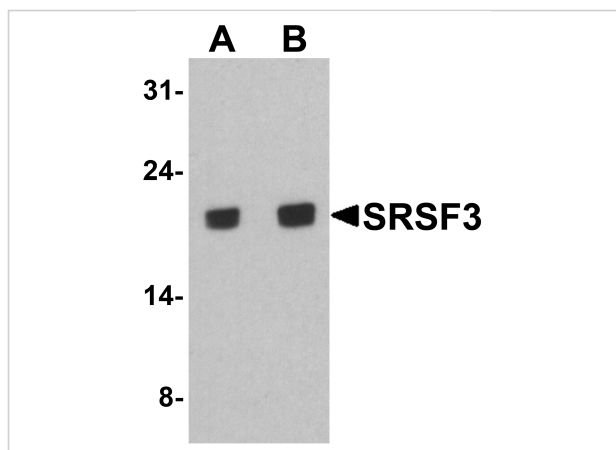
CATALOG NUMBER: 8179

Specifications

Host Species	Rabbit
Species Reactivity	Human, Mouse, Rat
Homology	Predicted species reactivity based on immunogen sequence: Bovine: (100%)
Immunogen	SRSF3 antibody was raised against a 19 amino acid peptide near the center of human SRSF3. The immunogen is located within amino acids 80 - 130 of SRSF3.
Conjugate	Unconjugated
Tested Applications	ELISA, ICC, IF, WB
User Note	Optimal dilutions for each application to be determined by the researcher.
Specificity	SRSF3 antibody is human, mouse and rat reactive.
Predicted Molecular Weight	Predicted: 18 kDa Observed: 19 kDa

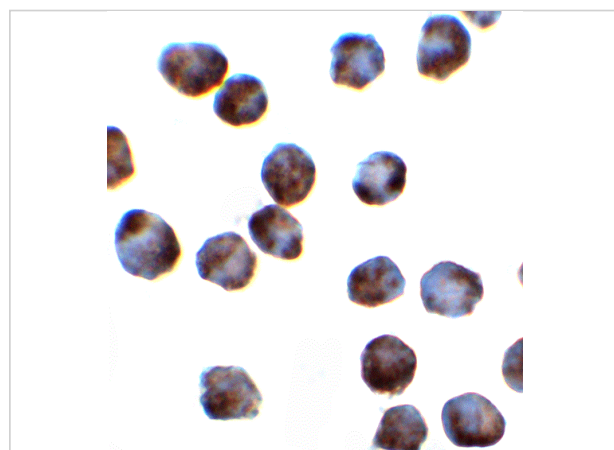
Properties

Purification	SRSF3 antibody is affinity chromatography purified via peptide column.
Clonality	Polyclonal
Isotype	IgG
Physical State	Liquid
Buffer	SRSF3 antibody is supplied in PBS containing 0.02% sodium azide.
Concentration	1 mg/mL
Storage Conditions	SRSF3 antibody can be stored at 4°C for three months and -20°C, stable for up to one year.



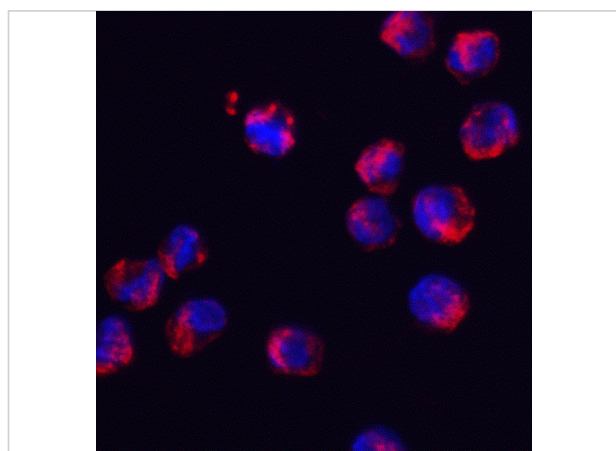
SRSF3 Antibody 1

Western blot analysis of SRSF3 in K562 cell lysate with SRSF3 antibody at (A) 1 and (B) 2 $\mu\text{g}/\text{mL}$.



SRSF3 Antibody 2

Immunocytochemistry of SRSF3 in K562 cells with SRSF3 antibody at 2 $\mu\text{g}/\text{mL}$.



SRSF3 Antibody 3

Immunofluorescence of SRSF3 in K562 cells with SRSF3 antibody at 2 $\mu\text{g}/\text{mL}$.

Red: SRSF3 Antibody (8179)
Blue: DAPI staining

Disclaimer

Disclaimer

Optimal dilutions/concentrations should be determined by the end user. The information provided is a guideline for product use. This product is for research use only.

For research use only. For additional information, visit ProSci's [Terms and Conditions Page](#).