

## ARID1A Antibody

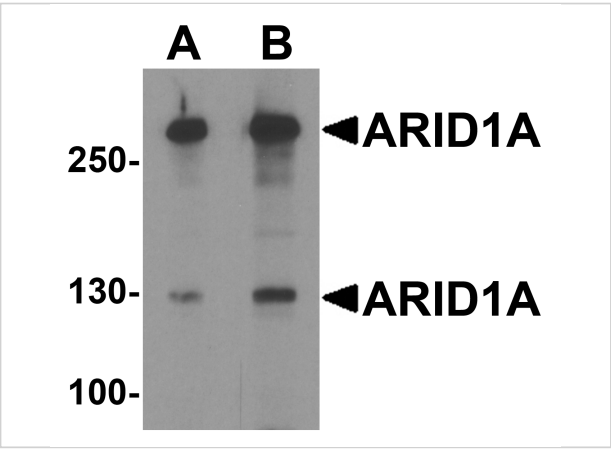
CATALOG NUMBER: 8173

### Specifications

Host Species	Rabbit
Species Reactivity	Human, Mouse, Rat
Immunogen	ARID1A antibody was raised against an 18 amino acid peptide near the amino terminus of human ARID1A. The immunogen is located within amino acids 580 - 630 of ARID1A.
Conjugate	Unconjugated
Tested Applications	ELISA, IF, IHC-P, WB
User Note	Optimal dilutions for each application to be determined by the researcher.
Specificity	ARID1A antibody is human, mouse and rat reactive. Multiple isoforms of ARID1A protein are known to exist.
Predicted Molecular Weight	Predicted: 133, 227, 251 kDa Observed: 130, 260 kDa

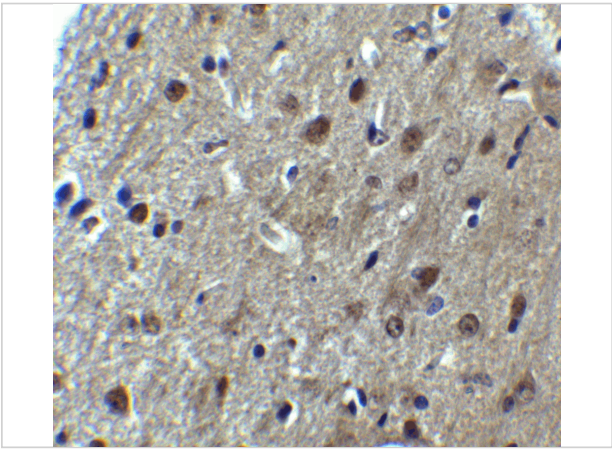
### Properties

Purification	ARID1A antibody is affinity chromatography purified via peptide column.
Clonality	Polyclonal
Isotype	IgG
Physical State	Liquid
Buffer	ARID1A antibody is supplied in PBS containing 0.02% sodium azide.
Concentration	1 mg/mL
Storage Conditions	ARID1A antibody can be stored at 4°C for three months and -20°C, stable for up to one year.



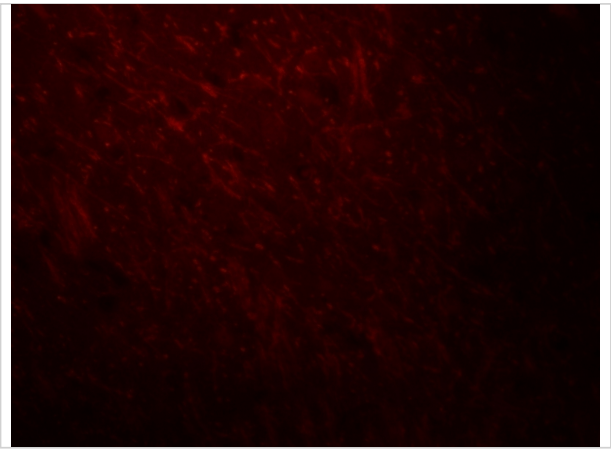
**ARID1A Antibody 1**

Western blot analysis of ARID1A in SK-N-SH cell lysate with ARID1A antibody at (A) 1 and (B) 2 µg/ml.



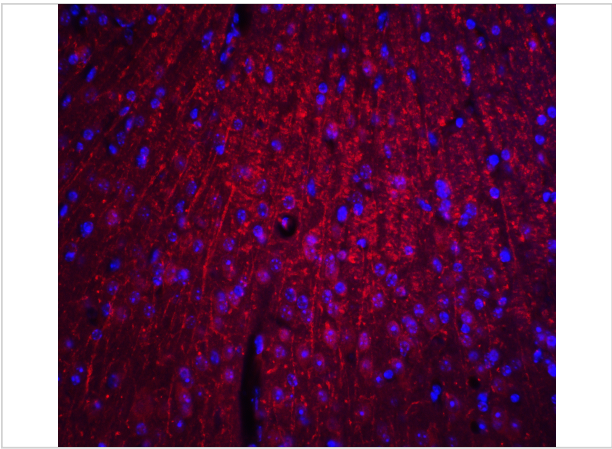
**ARID1A Antibody 2**

Immunohistochemistry of ARID1A in mouse brain tissue with ARID1A antibody at 5 µg/mL.



**ARID1A Antibody 3**

Immunofluorescence of ARID1A in mouse brain tissue with ARID1A antibody at 20 µg/ml.



**ARID1A Antibody 4**

Immunofluorescence of ARID1A in mouse brain tissue with ARID1A antibody at 20 µg/ml.

**Disclaimer**

<b>Disclaimer</b>	Optimal dilutions/concentrations should be determined by the end user. The information provided is a guideline for product use. This product is for research use only.
-------------------	------------------------------------------------------------------------------------------------------------------------------------------------------------------------

For research use only. For additional information, visit ProSci's [Terms and Conditions Page](#).