

IKK alpha Antibody

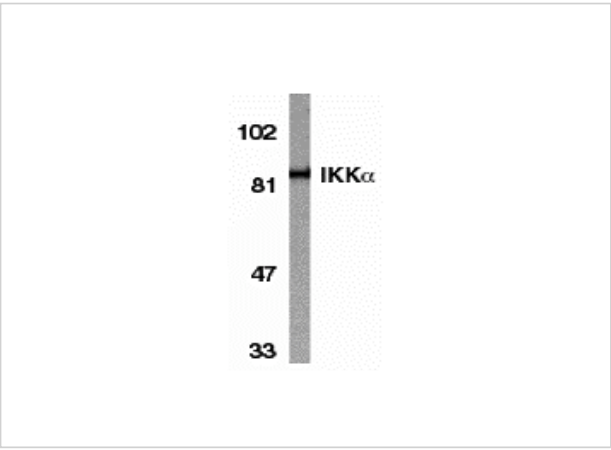
CATALOG NUMBER: 2025

Specifications

Host Species	Rabbit
Species Reactivity	Human
Homology	Predicted species reactivity based on immunogen sequence: Bovine: (94%), Mouse: (79%)
Immunogen	IKK alpha antibody was raised against a 19 amino acid peptide near the carboxy terminus of human IKK alpha. The immunogen is located within the last 50 amino acids of IKK alpha.
Conjugate	Unconjugated
Tested Applications	ELISA, ICC, IF, WB
User Note	Optimal dilutions for each application to be determined by the researcher.
Specificity	Antibody has no cross response to IKKb or IKKg.
Predicted Molecular Weight	85 kDa

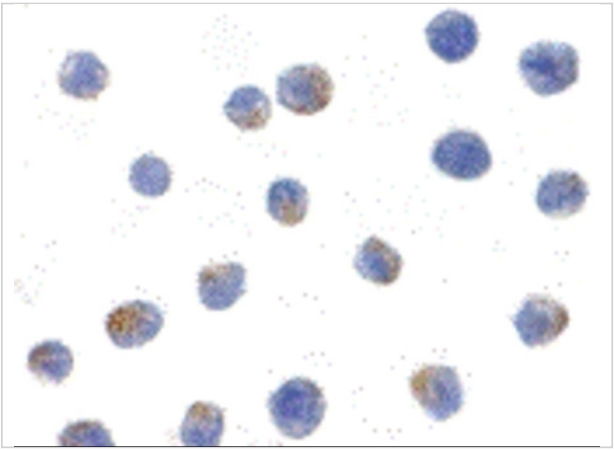
Properties

Purification	IKK alpha Antibody is affinity chromatography purified via peptide column.
Clonality	Polyclonal
Isotype	IgG
Physical State	Liquid
Buffer	IKK alpha Antibody is supplied in PBS containing 0.02% sodium azide.
Concentration	1 mg/ml
Storage Conditions	IKK alpha antibody can be stored at 4°C for three months and -20°C, stable for up to one year. As with all antibodies care should be taken to avoid repeated freeze thaw cycles. Antibodies should not be exposed to prolonged high temperatures.



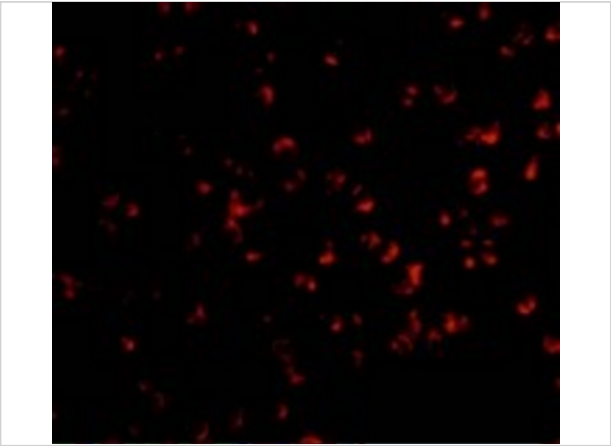
IKK alpha Antibody 1

Western blot analysis of IKK alpha in HeLa whole cell lysate with IKK alpha antibody at 1:1000 dilution.



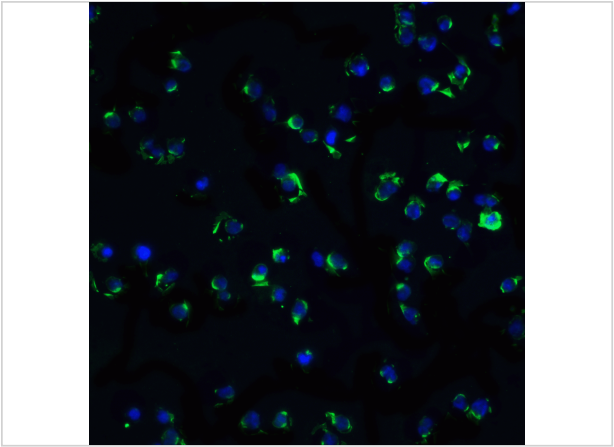
IKK alpha Antibody 2

Immunocytochemistry of IKK alpha in Jurkat cells with IKK alpha antibody at 1µg/mL.



IKK alpha Antibody 3

Immunofluorescence of IKK alpha in Jurkat cells with IKK alpha antibody at 10 µg/mL.



IKK alpha Antibody 4

Immunofluorescence of IKK alpha in Jurkat cells with IKK alpha antibody at 20 µg/mL.

Green: IKK alpha Antibody (2025)
Blue: DAPI staining

Disclaimer

Disclaimer	Optimal dilutions/concentrations should be determined by the end user. The information provided is a guideline for product use. This product is for research use only.
------------	--

For research use only. For additional information, visit ProSci's [Terms and Conditions Page](#).