

ADORA2B Antibody

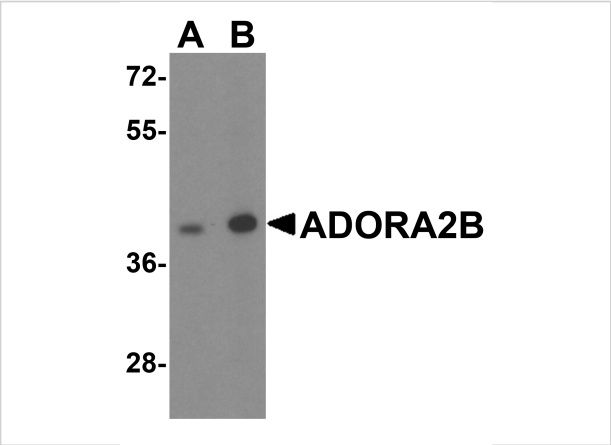
CATALOG NUMBER: 8111

Specifications

Host Species	Rabbit
Species Reactivity	Human, Mouse, Rat
Homology	Predicted species reactivity based on immunogen sequence: Rabbit: (80%)
Immunogen	ADORA2B antibody was raised against a 19 amino acid peptide near the carboxy terminus of human ADORA2B. The immunogen is located within the last 50 amino acids of ADORA2B.
Conjugate	Unconjugated
Tested Applications	ELISA, IF, IHC-P, WB
User Note	Optimal dilutions for each application to be determined by the researcher.
Specificity	ADORA2B antibody is human, mouse and rat reactive. At least two isoforms of ADORA2B are known to exist; this antibody will detect both isoforms. ADORA2B antibody is predicted to not cross-react with ADORA2A.
Predicted Molecular Weight	Predicted: 37 kDa Observed: 41 kDa

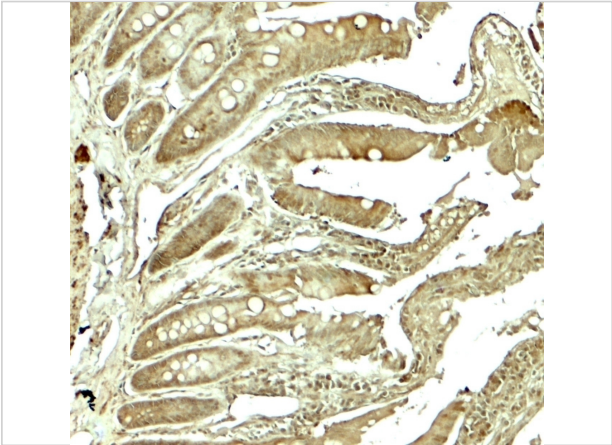
Properties

Purification	ADORA2B antibody is affinity chromatography purified via peptide column.
Clonality	Polyclonal
Isotype	IgG
Physical State	Liquid
Buffer	ADORA2B antibody is supplied in PBS containing 0.02% sodium azide.
Concentration	1 mg/mL
Storage Conditions	ADORA2B antibody can be stored at 4°C for up to one year. Antibodies should not be exposed to prolonged high temperatures.



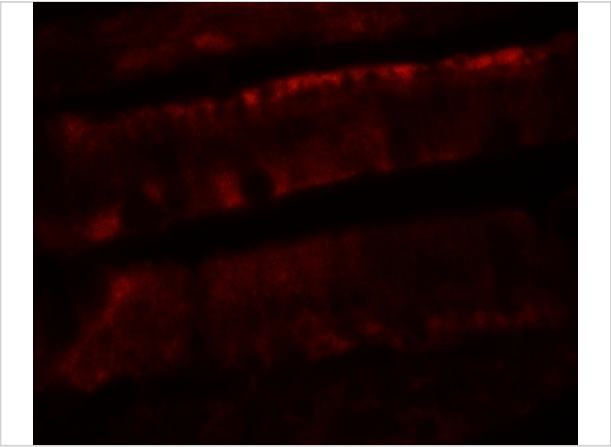
ADORA2B Antibody 1

Western blot analysis of ADORA2B in mouse kidney tissue lysate with ADORA2B antibody at (A) 0.25 and (B) 0.5 µg/mL



ADORA2B Antibody 2

Immunohistochemistry of ADORA2B in rat colon tissue with ADORA2B antibody at 5 µg/mL.



ADORA2B Antibody 3

Immunofluorescence of ADORA2B in rat colon tissue with ADORA2B antibody at 20 µg/mL.

Disclaimer

Disclaimer	Optimal dilutions/concentrations should be determined by the end user. The information provided is a guideline for product use. This product is for research use only.
------------	--

For research use only. For additional information, visit ProSci's [Terms and Conditions Page](#).