

## DcR2 Antibody

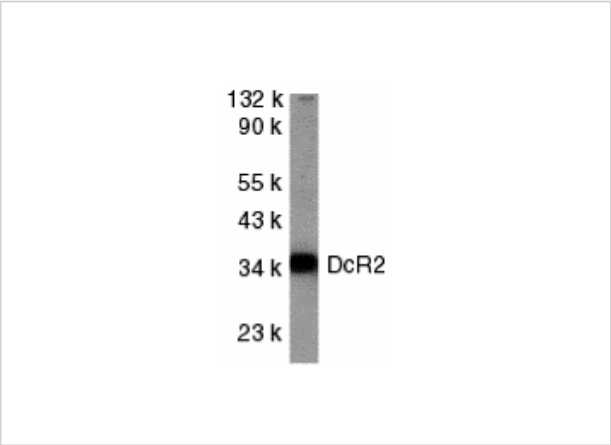
CATALOG NUMBER: 2021

### Specifications

Host Species	Rabbit
Species Reactivity	Human, Mouse, Rat
Immunogen	DcR2 antibody was raised against a 15 amino acid peptide near the center of human DcR2. The immunogen is located within amino acids 230 - 280 of DcR2.
Conjugate	Unconjugated
Tested Applications	ELISA, ICC, IF, IHC-P, WB
User Note	Optimal dilutions for each application to be determined by the researcher.
Predicted Molecular Weight	Predicted: 36 kDa Observed: 36 kDa

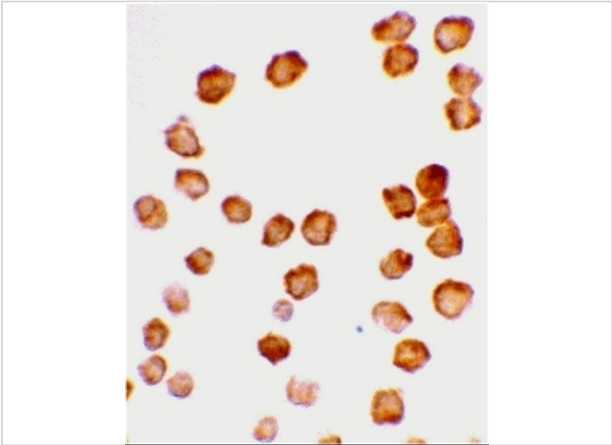
### Properties

Purification	DcR2 Antibody is affinity chromatography purified via peptide column.
Clonality	Polyclonal
Isotype	IgG
Physical State	Liquid
Buffer	DcR2 Antibody is supplied in PBS containing 0.02% sodium azide.
Concentration	1 mg/mL
Storage Conditions	DcR2 antibody can be stored at 4°C for three months and -20°C, stable for up to one year. As with all antibodies care should be taken to avoid repeated freeze thaw cycles. Antibodies should not be exposed to prolonged high temperatures.



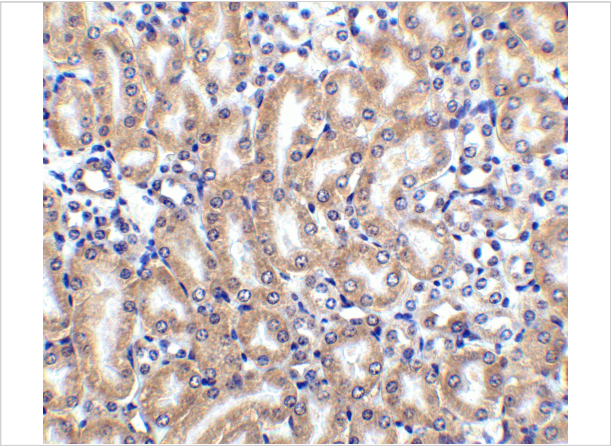
DcR2 Antibody 1

Western blot analysis of DcR2 in HeLa whole cell lysate with DcR2 antibody at 1 µg/mL.



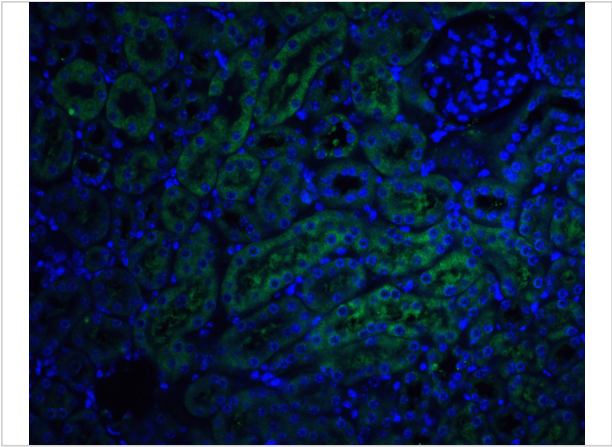
DcR2 Antibody 2

Immunocytochemistry staining of HeLa cells using DcR2 antibody at 10µg/mL.



DcR2 Antibody 3

Immunohistochemistry of DcR2 in mouse kidney node tissue with DcR2 antibody at 2.5 µg/ml.



DcR2 Antibody 4

Immunofluorescence of DcR2 in mouse kidney tissue with DcR2 antibody at 20 µg/ml.

Green: DcR2 Antibody (2021)  
Blue: DAPI staining

Disclaimer

Disclaimer	Optimal dilutions/concentrations should be determined by the end user. The information provided is a guideline for product use. This product is for research use only.
------------	--

For research use only. For additional information, visit ProSci's [Terms and Conditions Page](#).