

EDA1 Antibody

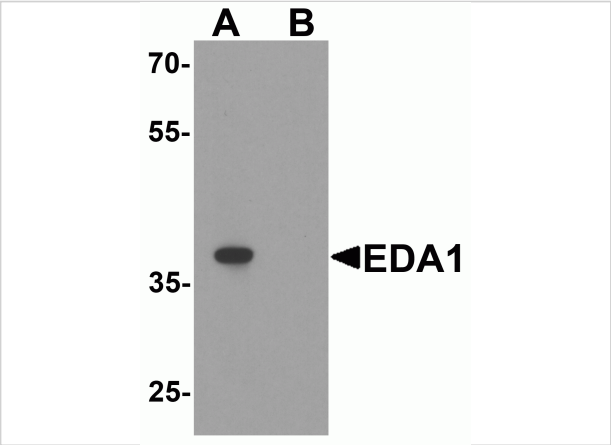
CATALOG NUMBER: 8045

Specifications

Host Species	Rabbit
Species Reactivity	Human, Mouse, Rat
Homology	Predicted species reactivity based on immunogen sequence: Bovine: (89%)
Immunogen	EDA1 antibody was raised against an 19 amino acid peptide near the center of human EDA1. The immunogen is located within amino acids 130 - 180 of EDA1.
Conjugate	Unconjugated
Tested Applications	ELISA, IF, IHC-P, WB
User Note	Optimal dilutions for each application to be determined by the researcher.
Specificity	EDA1 antibody is human, mouse and rat reactive. Multiple isoforms of EDA1 are known to exist.
Predicted Molecular Weight	Predicted: 16, 43 kDa Observed: 39 kDa

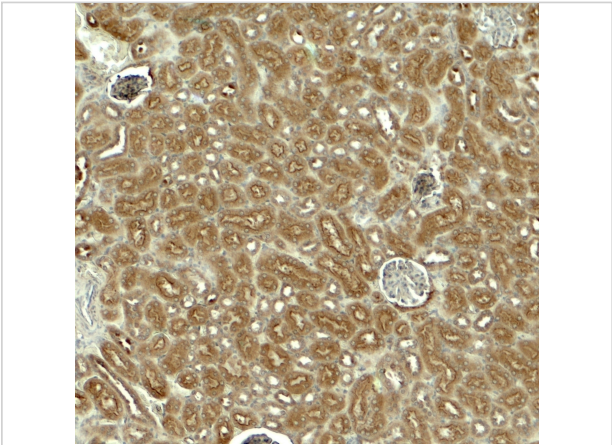
Properties

Purification	EDA1 antibody is affinity chromatography purified via peptide column.
Clonality	Polyclonal
Isotype	IgG
Physical State	Liquid
Buffer	EDA1 antibody is supplied in PBS containing 0.02% sodium azide.
Concentration	1 mg/mL
Storage Conditions	EDA1 antibody can be stored at 4°C for three months and -20°C, stable for up to one year.



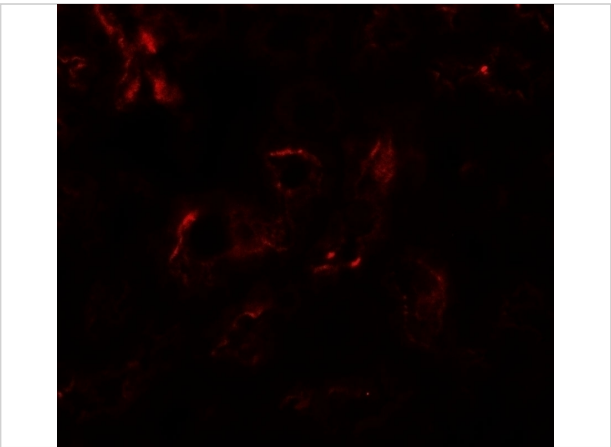
EDA1 Antibody 1

Western blot analysis of EDA1 in mouse kidney tissue lysate with EDA1 antibody at 1 µg/ml in (A) the absence and (B) the presence of blocking peptide.



EDA1 Antibody 2

Immunohistochemistry of EDA1 in mouse kidney tissue with EDA1 antibody at 5 µg/ml.



EDA1 Antibody 3

Immunofluorescence of EDA1 in mouse kidney tissue with EDA1 antibody at 20 µg/ml.

Disclaimer

Disclaimer	Optimal dilutions/concentrations should be determined by the end user. The information provided is a guideline for product use. This product is for research use only.
------------	--

For research use only. For additional information, visit ProSci's [Terms and Conditions Page](#).