

## SESTRIN2 Antibody

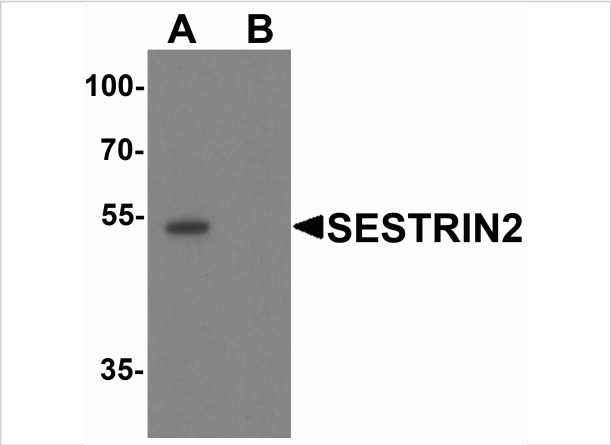
CATALOG NUMBER: 8023

### Specifications

Host Species	Rabbit
Species Reactivity	Human, Mouse, Rat
Homology	Predicted species reactivity based on immunogen sequence: Bovine: (77%)
Immunogen	SESTRIN2 antibody was raised against a 19 amino acid peptide near the center of human SESTRIN2. The immunogen is located within amino acids 220 - 270 of SESTRIN2.
Conjugate	Unconjugated
Tested Applications	ELISA, IF, IHC-P, WB
User Note	Optimal dilutions for each application to be determined by the researcher.
Specificity	SESTRIN2 antibody is human, mouse and rat reactive. At least two isoforms of SESTRIN2 are known to exist; this antibody will detect both isoforms. SESTRIN2 antibody is predicted to not cross-react with SESTRIN1.
Predicted Molecular Weight	Predicted: 54 kDa Observed: 53 kDa

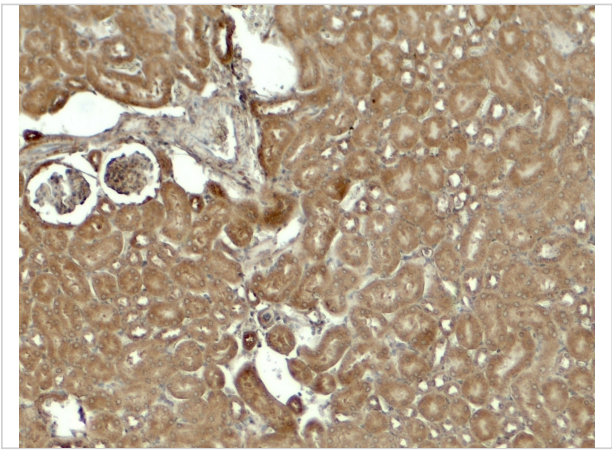
### Properties

Purification	SESTRIN2 antibody is affinity chromatography purified via peptide column.
Clonality	Polyclonal
Isotype	IgG
Physical State	Liquid
Buffer	SESTRIN2 antibody is supplied in PBS containing 0.02% sodium azide.
Concentration	1 mg/mL
Storage Conditions	SESTRIN2 antibody can be stored at 4°C for three months and -20°C, stable for up to one year.



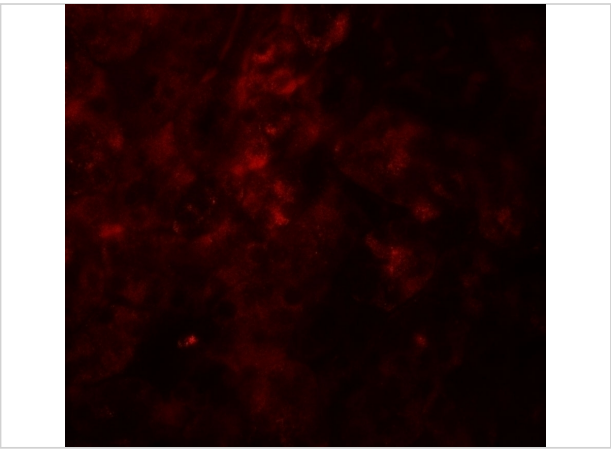
SESTRIN2 Antibody 1

Western blot analysis of SESTRIN2 in mouse kidney tissue lysate with SESTRIN2 antibody at 1 µg/ml in (A) the absence and (B) the presence of blocking peptide.



SESTRIN2 Antibody 2

Immunohistochemistry of SESTRIN2 in mouse kidney tissue with SESTRIN2 antibody at 5 µg/ml.



SESTRIN2 Antibody 3

Immunofluorescence of SESTRIN2 in mouse kidney tissue with SESTRIN2 antibody at 20 µg/ml.

Disclaimer

Disclaimer	Optimal dilutions/concentrations should be determined by the end user. The information provided is a guideline for product use. This product is for research use only.
------------	--

For research use only. For additional information, visit ProSci's [Terms and Conditions Page](#).