

Apaf1 Antibody

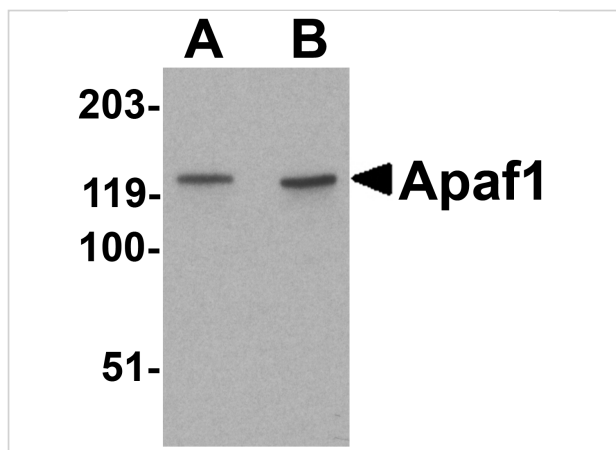
CATALOG NUMBER: 2013

Specifications

Host Species	Rabbit
Species Reactivity	Human, Mouse, Rat
Immunogen	Apaf1 antibody was raised against a peptide corresponding to amino acids near the amino terminus of human Apaf1. The sequences of the immunogenic peptide are identical between human and mouse. The immunogen is located within the first 50 amino acids of Apaf1.
Conjugate	Unconjugated
Tested Applications	ELISA, IF, IHC-P, WB
User Note	Optimal dilutions for each application to be determined by the researcher.
Predicted Molecular Weight	Predicted: 132 kDa Observed: 130 kDa

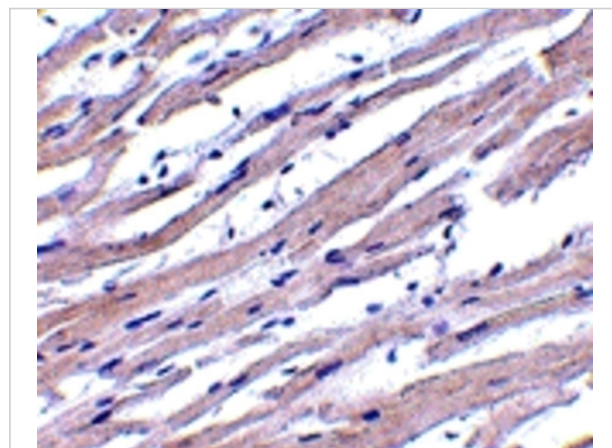
Properties

Purification	Apaf1 Antibody is affinity chromatography purified via peptide column.
Clonality	Polyclonal
Isotype	IgG
Physical State	Liquid
Buffer	Apaf1 Antibody is supplied in PBS containing 0.02% sodium azide.
Concentration	1 mg/ml
Storage Conditions	Apaf1 antibody can be stored at 4°C for three months and -20°C, stable for up to one year. As with all antibodies care should be taken to avoid repeated freeze thaw cycles. Antibodies should not be exposed to prolonged high temperatures.



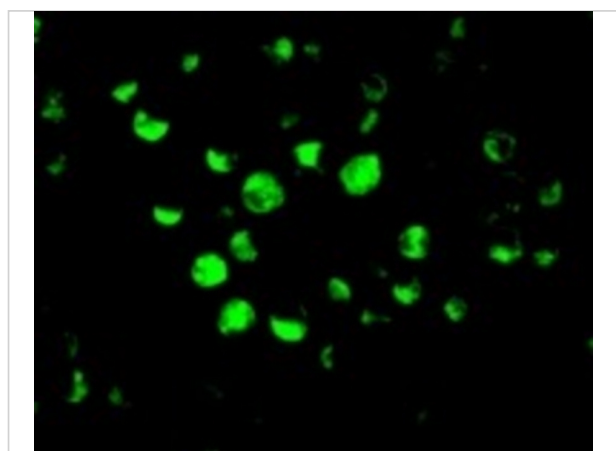
Apaf1 Antibody 1

Western blot analysis of Apaf1 in K562 cell lysate with Apaf1 antibody at (A) 1 and (B) 2 $\mu\text{g}/\text{mL}$.



Apaf1 Antibody 2

Immunohistochemistry of Apaf1 in human heart tissue with Apaf1 antibody at 1 $\mu\text{g}/\text{mL}$.



Apaf1 Antibody 3

Immunofluorescence of Apaf1 in K562 cells with Apaf1 antibody at 10 $\mu\text{g}/\text{mL}$.

Disclaimer

Disclaimer

Optimal dilutions/concentrations should be determined by the end user. The information provided is a guideline for product use. This product is for research use only.

For research use only. For additional information, visit ProSci's [Terms and Conditions Page](#).