

WDR61 Antibody

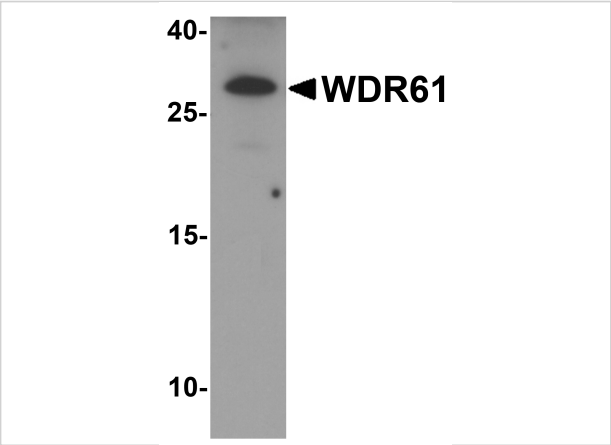
CATALOG NUMBER: 7985

Specifications

Host Species	Rabbit
Species Reactivity	Human, Mouse, Rat
Homology	Predicted species reactivity based on immunogen sequence: Bovine: (93%), Chicken: (79%)
Immunogen	WDR61 antibody was raised against a 14 amino acid peptide near the amino terminus of human WDR61. The immunogen is located within the first 50 amino acids of WDR61.
Conjugate	Unconjugated
Tested Applications	ELISA, IF, IHC-P, WB
User Note	Optimal dilutions for each application to be determined by the researcher.
Specificity	WDR61 antibody is human, mouse and rat reactive.
Predicted Molecular Weight	Predicted: 34 kDa Observed: 30 kDa

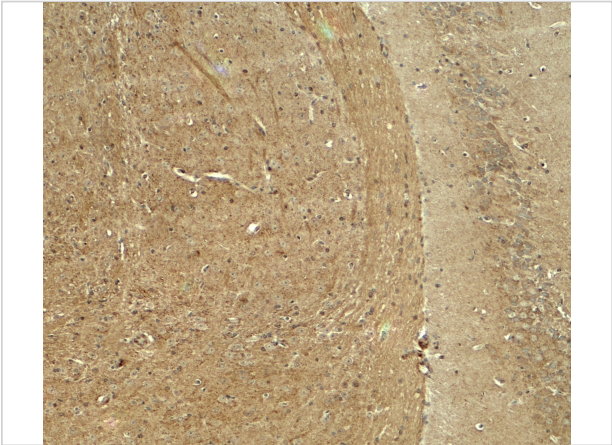
Properties

Purification	WDR61 antibody is affinity chromatography purified via peptide column.
Clonality	Polyclonal
Isotype	IgG
Physical State	Liquid
Buffer	WDR61 antibody is supplied in PBS containing 0.02% sodium azide.
Concentration	1 mg/mL
Storage Conditions	WDR61 antibody can be stored at 4°C for three months and -20°C, stable for up to one year.



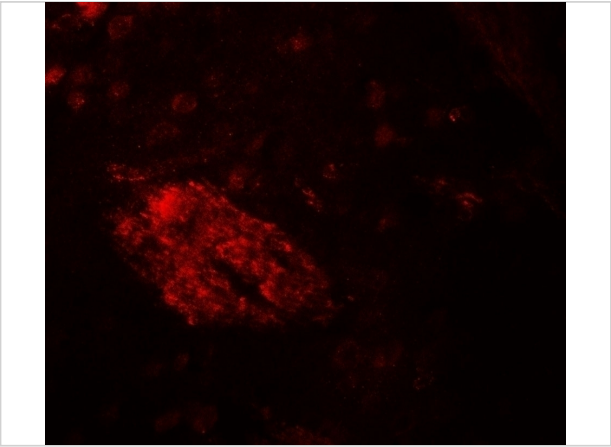
WDR61 Antibody 1

Western blot analysis of WDR61 in SK-N-SH cell lysate with WDR61 antibody at 1 µg/ml.



WDR61 Antibody 2

Immunohistochemistry of WDR61 in mouse brain tissue with WDR61 antibody at 5 µg/ml.



WDR61 Antibody 3

Immunofluorescence of WDR61 in mouse brain tissue with WDR61 antibody at 20 µg/ml.

Disclaimer

Disclaimer	Optimal dilutions/concentrations should be determined by the end user. The information provided is a guideline for product use. This product is for research use only.
------------	--

For research use only. For additional information, visit ProSci's [Terms and Conditions Page](#).