

CAD Antibody

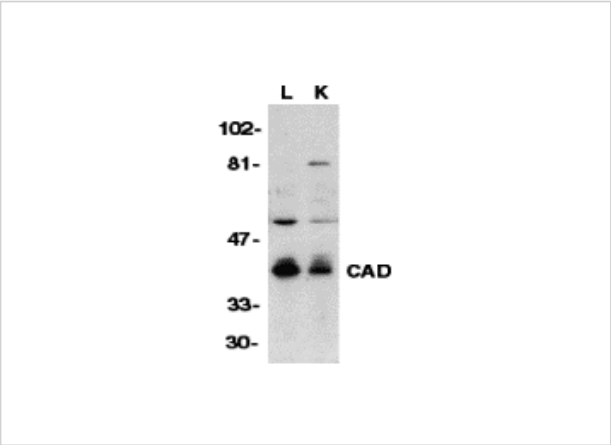
CATALOG NUMBER: 2011

Specifications

Host Species	Rabbit
Species Reactivity	Mouse
Homology	Predicted species reactivity based on immunogen sequence: Rat: (94%), Human: (79%)
Immunogen	CAD antibody was raised against a 16 amino acid peptide near the carboxy terminus of murine CAD. The immunogen is located within the last 50 amino acids of CAD.
Conjugate	Unconjugated
Tested Applications	ELISA, IF, IHC-P, WB
User Note	Optimal dilutions for each application to be determined by the researcher.
Predicted Molecular Weight	40 kDa

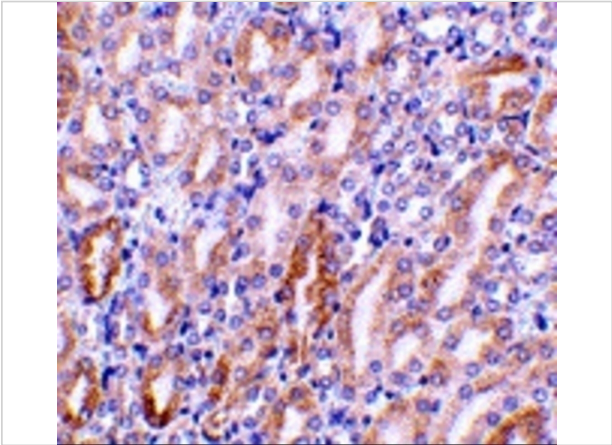
Properties

Purification	CAD Antibody is affinity chromatography purified via peptide column.
Clonality	Polyclonal
Isotype	IgG
Physical State	Liquid
Buffer	CAD Antibody is supplied in PBS containing 0.02% sodium azide.
Concentration	1 mg/ml
Storage Conditions	CAD antibody can be stored at 4°C for three months and -20°C, stable for up to one year. As with all antibodies care should be taken to avoid repeated freeze thaw cycles. Antibodies should not be exposed to prolonged high temperatures.



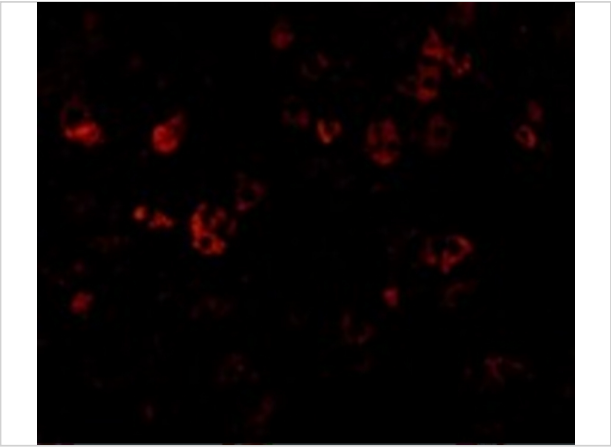
CAD Antibody 1

Western blot analysis of CAD in mouse lung (L) and kidney (K) tissue lysates with CAD antibody at 1:500 dilution.



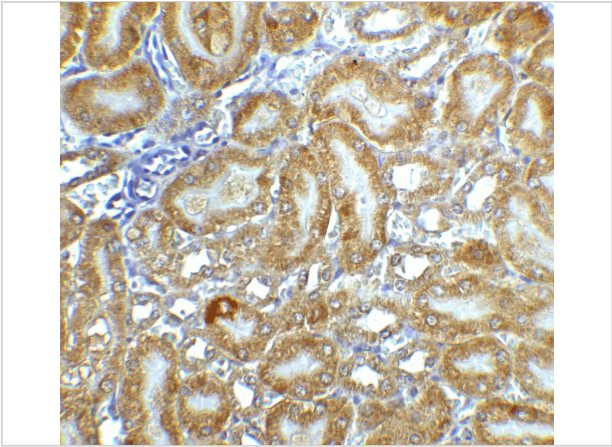
CAD Antibody 2

Immunohistochemistry of CAD in mouse kidney tissue with CAD antibody at 1 µg/mL.



CAD Antibody 3

Immunofluorescence of CAD in Mouse Kidney cells with CAD antibody at 10 µg/mL.



CAD Antibody 4

Immunohistochemistry of CAD in mouse kidney tissue with CAD antibody at 5 µg/mL.

Disclaimer

Disclaimer	Optimal dilutions/concentrations should be determined by the end user. The information provided is a guideline for product use. This product is for research use only.
------------	--

For research use only. For additional information, visit ProSci's [Terms and Conditions Page](#).