

PARK2 Antibody

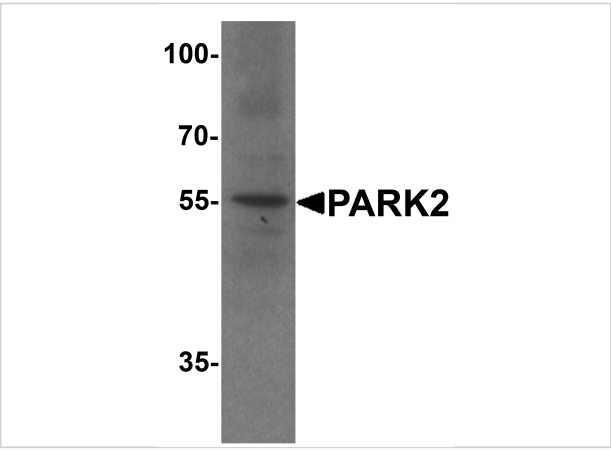
CATALOG NUMBER: 7903

Specifications

Host Species	Rabbit
Species Reactivity	Human
Immunogen	PARK2 antibody was raised against a 17 amino acid peptide near the amino terminus of human PARK2. The immunogen is located within amino acids 110 - 160 of PARK2.
Conjugate	Unconjugated
Tested Applications	ELISA, IF, IHC-P, WB
User Note	Optimal dilutions for each application to be determined by the researcher.
Specificity	PARK2 antibody is human specific.
Predicted Molecular Weight	Predicted: 51 kDa Observed: 55 kDa

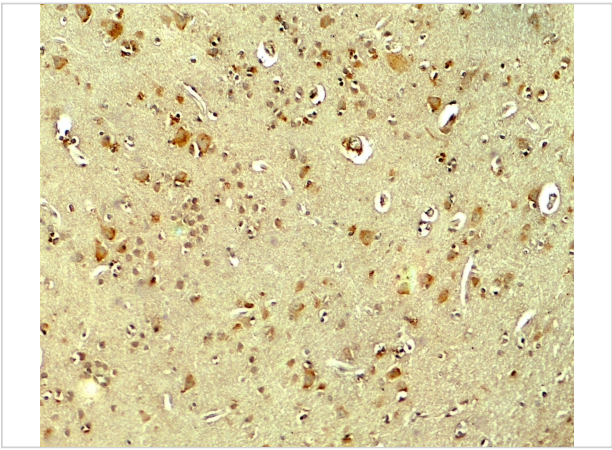
Properties

Purification	PARK2 antibody is affinity chromatography purified via peptide column.
Clonality	Polyclonal
Isotype	IgG
Physical State	Liquid
Buffer	PARK2 antibody is supplied in PBS containing 0.02% sodium azide.
Concentration	1 mg/mL
Storage Conditions	PARK2 antibody can be stored at 4°C for three months and -20°C, stable for up to one year.



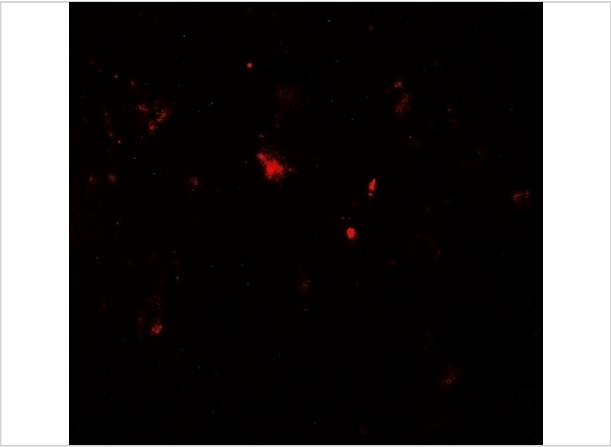
PARK2 Antibody 1

Western blot analysis of PARK2 in human cerebellum tissue lysate with PARK2 antibody at 1 µg/ml.



PARK2 Antibody 2

Immunohistochemistry of PARK2 in human brain tissue with PARK2 antibody at 5 µg/ml.



PARK2 Antibody 3

Immunofluorescence of PARK2 in human brain tissue with PARK2 antibody at 20 µg/ml.

Disclaimer

Disclaimer	Optimal dilutions/concentrations should be determined by the end user. The information provided is a guideline for product use. This product is for research use only.
------------	--

For research use only. For additional information, visit ProSci's [Terms and Conditions Page](#).