

PINK1 Antibody

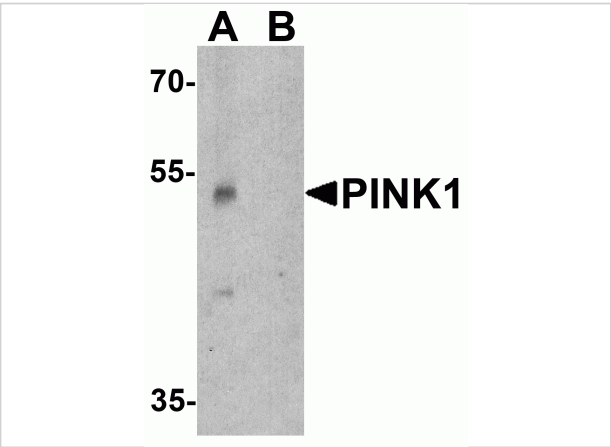
CATALOG NUMBER: 7859

Specifications

Host Species	Rabbit
Species Reactivity	Human, Mouse, Rat
Immunogen	PINK1 antibody was raised against a 16 amino acid peptide near the amino terminus of human PINK1. The immunogen is located within amino acids 120 - 170 of PINK1.
Conjugate	Unconjugated
Tested Applications	ELISA, IF, IHC-P, WB
User Note	Optimal dilutions for each application to be determined by the researcher.
Specificity	PINK1 antibody is human, mouse and rat reactive. At least two isoforms are known to exist; this antibody will only detect the longer isoform. PINK1 antibody will detect the cleaved and uncleaved form of PINK1.
Predicted Molecular Weight	Predicted: 55 kDa Observed: 53 kDa

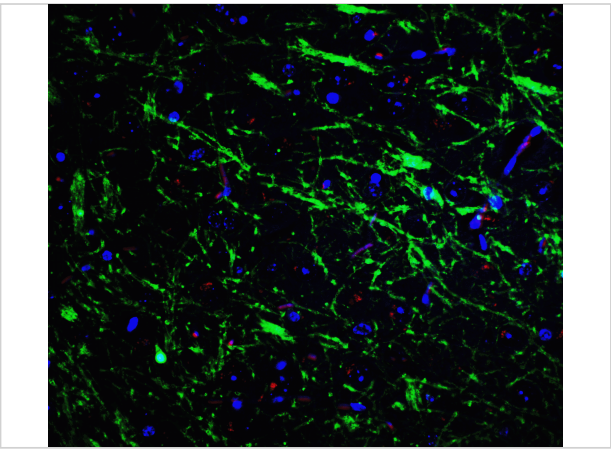
Properties

Purification	PINK1 antibody is affinity chromatography purified via peptide column.
Clonality	Polyclonal
Isotype	IgG
Physical State	Liquid
Buffer	PINK1 antibody is supplied in PBS containing 0.02% sodium azide.
Concentration	1 mg/mL
Storage Conditions	PINK1 antibody can be stored at 4°C for three months and -20°C, stable for up to one year.



PINK1 Antibody 1

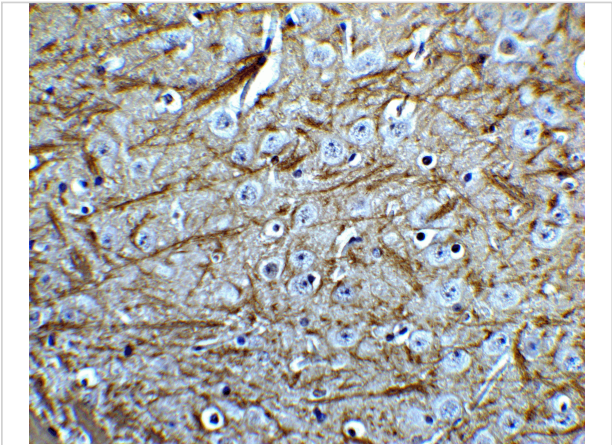
Western blot analysis of PINK1 in A431 cell lysate with PINK1 antibody at 1 µg/ml in (A) the absence and (B) the presence of blocking peptide.



PINK1 Antibody 3

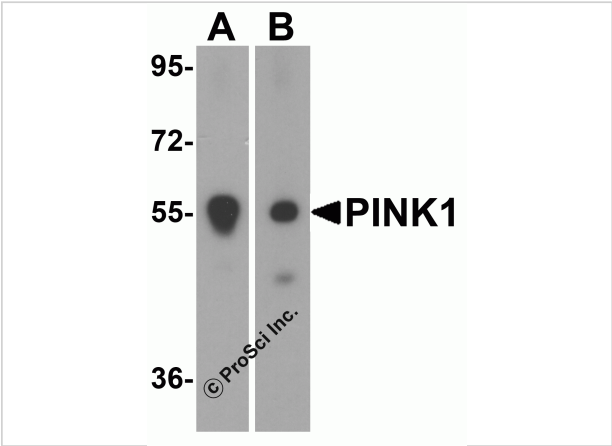
Immunofluorescence of PINK1 in mouse brain tissue with PINK1 Antibody at 20 µg/mL.

Green: PINK1 antibody (7859)
 Red: Phalloidin staining
 Blue: DAPI staining



PINK1 Antibody 2

Immunohistochemistry of PINK1 in mouse brain tissue with PINK1 Antibody at 5 µg/mL.



PINK1 Antibody 4

Western blot analysis of PINK1 in (A) mouse and (B) rat spleen tissue lysate with PINK1 antibody at 1 µg/mL.

Disclaimer

Disclaimer	Optimal dilutions/concentrations should be determined by the end user. The information provided is a guideline for product use. This product is for research use only.
------------	--

For research use only. For additional information, visit ProSci's [Terms and Conditions Page](#).