

SREBF2 Antibody

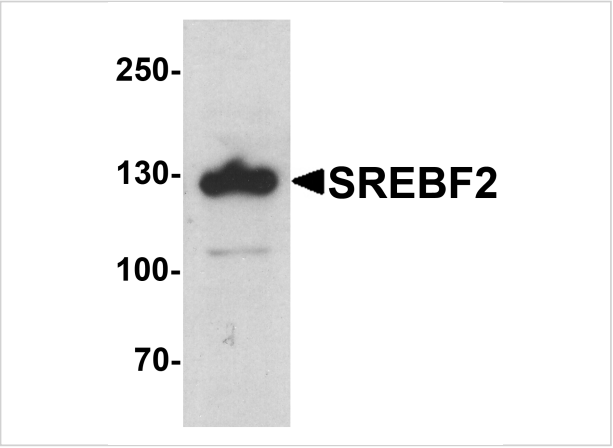
CATALOG NUMBER: 7855

Specifications

Host Species	Rabbit
Species Reactivity	Human, Mouse
Homology	Predicted species reactivity based on immunogen sequence: Rat: (100%)
Immunogen	SREBF2 antibody was raised against a 15 amino acid peptide near the center of human SREBF2. The immunogen is located within amino acids 440 - 490 of SREBF2.
Conjugate	Unconjugated
Tested Applications	ELISA, IF, IHC-P, WB
User Note	Optimal dilutions for each application to be determined by the researcher.
Specificity	SREBF2 antibody is human and mouse reactive. At least three isoforms of SREBF2 are known to exist. SREBF2 antibody is predicted not to cross-react with SREBF1.
Predicted Molecular Weight	Predicted: 126 kDa Observed: 128 kDa

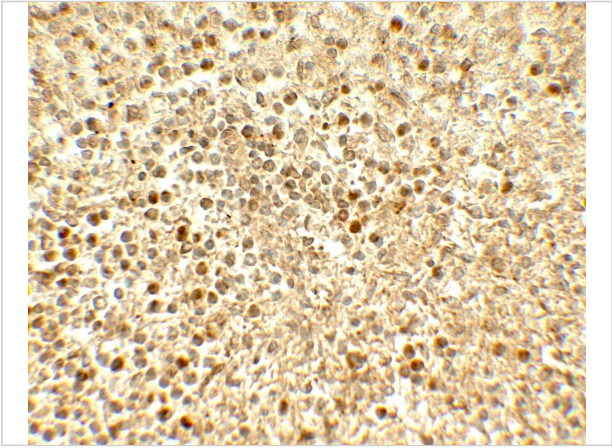
Properties

Purification	SREBF2 antibody is affinity chromatography purified via peptide column.
Clonality	Polyclonal
Isotype	IgG
Physical State	Liquid
Buffer	SREBF2 antibody is supplied in PBS containing 0.02% sodium azide.
Concentration	1 mg/mL
Storage Conditions	SREBF2 antibody can be stored at 4°C for three months and -20°C, stable for up to one year.



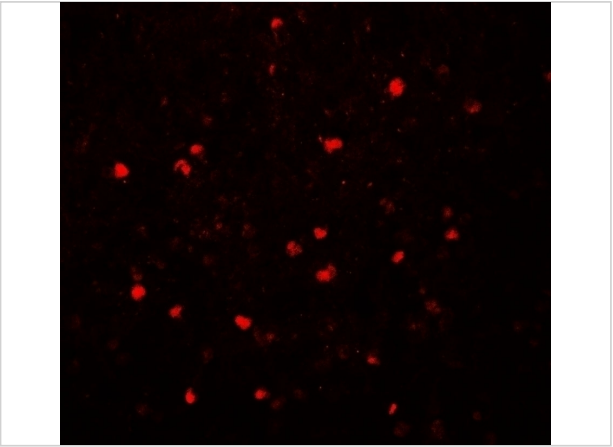
SREBF2 Antibody 1

Western blot analysis of SREBF2 in PC-3 cell lysate with SREBF1 antibody at 1 µg/ml.



SREBF2 Antibody 2

Immunohistochemistry of SREBF2 in human spleen tissue with SREBF2 antibody at 5 µg/mL.



SREBF2 Antibody 3

Immunofluorescence of SREBF2 in human spleen tissue with SREBF2 antibody at 20 µg/mL.

Disclaimer

Disclaimer	Optimal dilutions/concentrations should be determined by the end user. The information provided is a guideline for product use. This product is for research use only.
------------	--

For research use only. For additional information, visit ProSci's [Terms and Conditions Page](#).