

## PPARGC1A Antibody

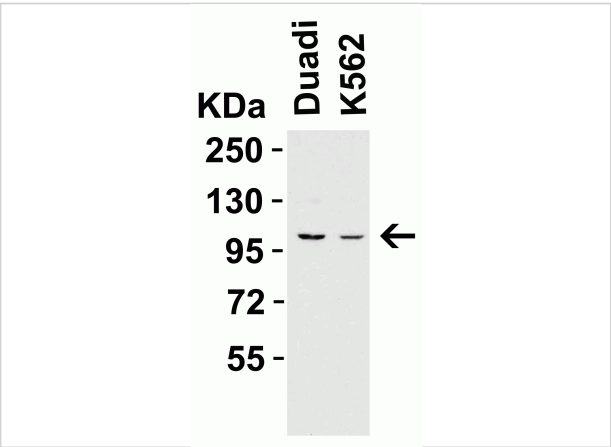
CATALOG NUMBER: 7793

### Specifications

<b>Host Species</b>	Rabbit
<b>Species Reactivity</b>	Human, Mouse, Rat
<b>Homology</b>	Predicted species reactivity based on immunogen sequence: Bovine: (100%), Pig: (94%)
<b>Immunogen</b>	PPARGC1A antibody was raised against a 17 amino acid peptide near the amino terminus of human PPARGC1A. The immunogen is located within amino acids 200 - 250 of PPARGC1A.
<b>Conjugate</b>	Unconjugated
<b>Tested Applications</b>	ELISA, IF, IHC-P, WB
<b>User Note</b>	Optimal dilutions for each application to be determined by the researcher.
<b>Specificity</b>	PPARGC1A antibody is human, mouse and rat reactive. At least three isoforms of PPARGC1A are known to exist; this antibody will detect all three isoforms.
<b>Predicted Molecular Weight</b>	Predicted: 91kD Observed: 100 kD

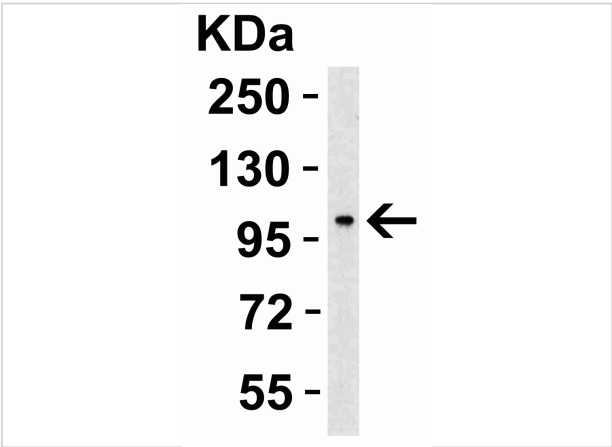
### Properties

<b>Purification</b>	PPARGC1A antibody is affinity chromatography purified via peptide column.
<b>Clonality</b>	Polyclonal
<b>Isotype</b>	IgG
<b>Physical State</b>	Liquid
<b>Buffer</b>	PPARGC1A antibody is supplied in PBS containing 0.02% sodium azide.
<b>Concentration</b>	1 mg/mL
<b>Storage Conditions</b>	PPARGC1A antibody can be stored at 4°C for three months and -20°C, stable for up to one year.



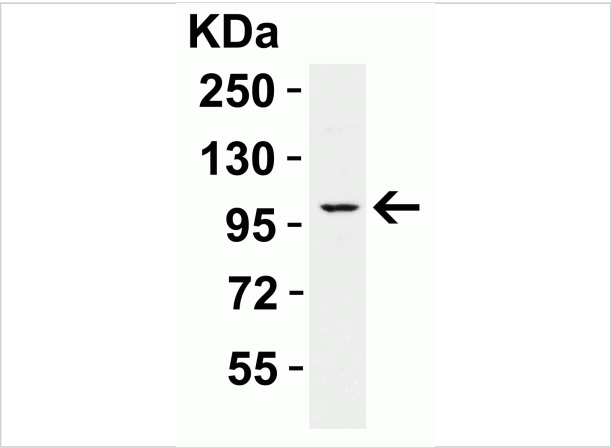
PPARGC1A Antibody 1

**Figure 1 WB Validation in Human Cell Lines**  
Loading: 15 µg of human cell lysate Antibodies: PPARGC1A 7793, 2 µg/mL , 1 h incubation at RT in 5% NFDm/TBST. Secondary: Goat Anti...



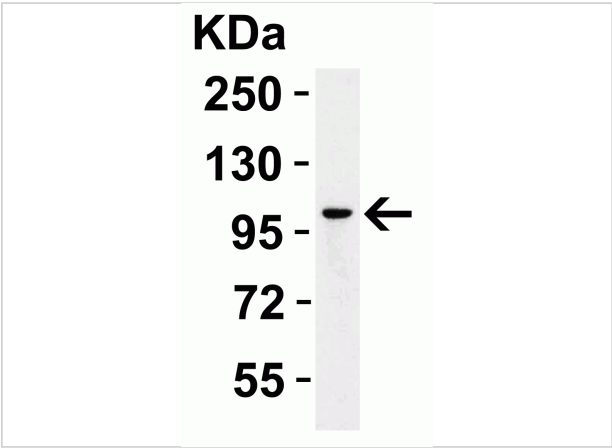
PPARGC1A Antibody 2

**WB Validation in Human Lung**  
Loading: 15 µg of human lung lysate Antibodies: PPARGC1A 7793, 2 µg/mL , 1 h incubation at RT in 5% NFDm/TBST. Secondary: Goat Anti-Rabbit IgG HRP...



PPARGC1A Antibody 3

**Figure 3 WB Validation in Mouse Skin**  
Loading: 15 µg of mouse skin lysate Antibodies: PPARGC1A 7793, 2 µg/mL , 1 h incubation at RT in 5% NFDm/TBST. Secondary: Goat Anti-Rabbi...



PPARGC1A Antibody 4

**Figure 4 WB Validation in Rat Kidney**  
Loading: 15 µg of rat kidney lysate Antibodies: PPARGC1A 7793, 2 µg/mL , 1 h incubation at RT in 5% NFDm/TBST. Secondary: Goat Anti-Rabb...

Disclaimer

Disclaimer	Optimal dilutions/concentrations should be determined by the end user. The information provided is a guideline for product use. This product is for research use only.
------------	--

For research use only. For additional information, visit ProSci's [Terms and Conditions Page](#).