

## CASR Antibody

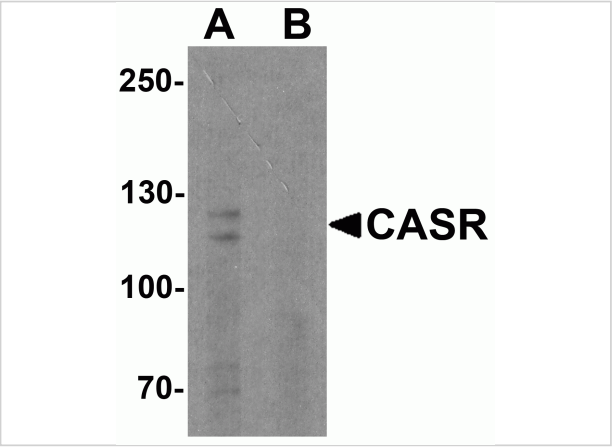
CATALOG NUMBER: 7785

### Specifications

Host Species	Rabbit
Species Reactivity	Human, Mouse, Rat
Homology	Predicted species reactivity based on immunogen sequence: Bovine: (100%)
Immunogen	CASR antibody was raised against a 15 amino acid peptide near the amino terminus of human CASR. The immunogen is located within the first 50 amino acids of CASR.
Conjugate	Unconjugated
Tested Applications	ELISA, IF, IHC-P, WB
User Note	Optimal dilutions for each application to be determined by the researcher.
Specificity	CASR antibody is human, mouse and rat reactive. At least two isoforms of CASR are known to exist.
Predicted Molecular Weight	Predicted: 101, 120 kDa Observed: 115, 125 kDa

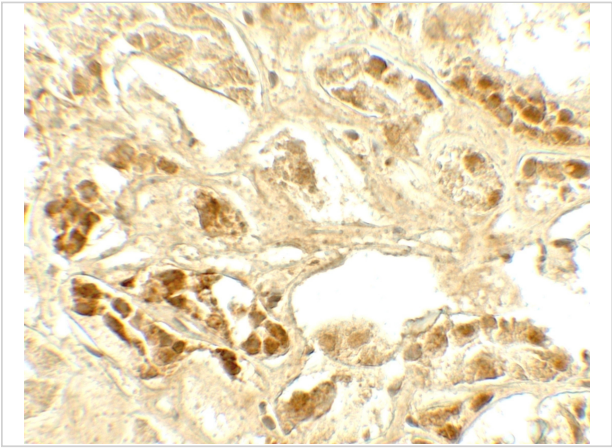
### Properties

Purification	CASR antibody is affinity chromatography purified via peptide column.
Clonality	Polyclonal
Isotype	IgG
Physical State	Liquid
Buffer	CASR Antibody is supplied in PBS containing 0.02% sodium azide.
Concentration	1 mg/mL
Storage Conditions	CASR antibody can be stored at 4°C for three months and -20°C, stable for up to one year.



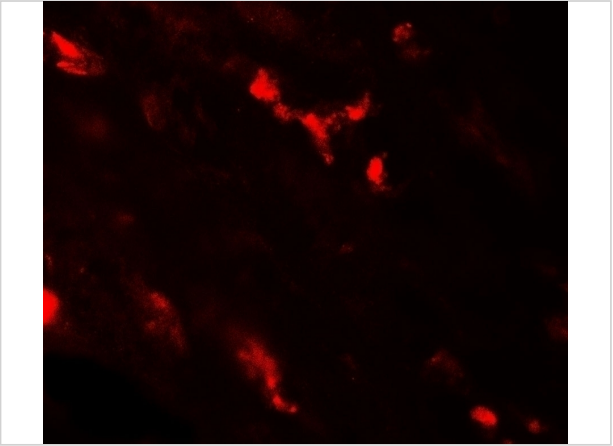
CASR Antibody 1

Western blot analysis of CASR in EL4 cell lysate with CASR antibody at 1 µg/ml in (A) the absence and (B) the presence of blocking peptide.



CASR Antibody 2

Immunohistochemistry of CASR in human kidney tissue with CASR antibody at 5 µg/mL.



CASR Antibody 3

Immunofluorescence of CASR in human kidney tissue with CASR antibody at 20 µg/mL.

Disclaimer

Disclaimer	Optimal dilutions/concentrations should be determined by the end user. The information provided is a guideline for product use. This product is for research use only.
------------	--

For research use only. For additional information, visit ProSci's [Terms and Conditions Page](#).