

## IFIT1 Antibody

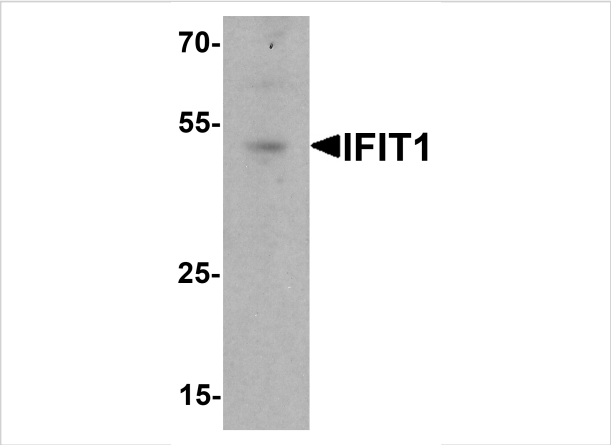
CATALOG NUMBER: 7757

### Specifications

Host Species	Rabbit
Species Reactivity	Human, Mouse, Rat
Immunogen	IFIT1 antibody was raised against an 18 amino acid peptide near the carboxy terminus of human IFIT1. The immunogen is located within amino acids 290 - 340 of IFIT1.
Conjugate	Unconjugated
Tested Applications	ELISA, IF, IHC-P, WB
User Note	Optimal dilutions for each application to be determined by the researcher.
Specificity	IFIT1 antibody is human, mouse and rat reactive. At least three isoforms of IFIT1 are known to exist. This antibody is predicted to not cross-react with other members of the IFIT protein family.
Predicted Molecular Weight	Predicted: 53 kDa Observed: 53 kDa

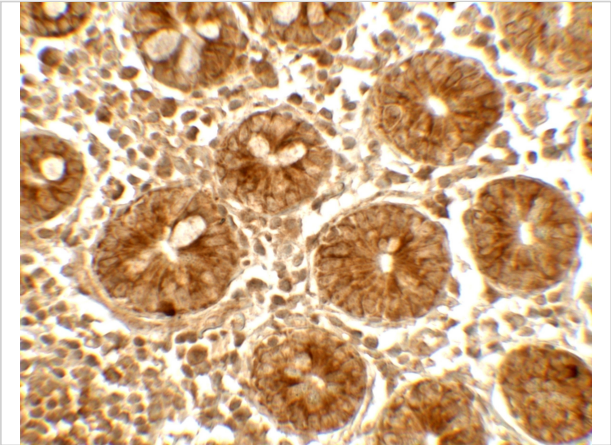
### Properties

Purification	IFIT1 antibody is affinity chromatography purified via peptide column.
Clonality	Polyclonal
Isotype	IgG
Physical State	Liquid
Buffer	IFIT1 Antibody is supplied in PBS containing 0.02% sodium azide.
Concentration	1 mg/mL
Storage Conditions	IFIT1 antibody can be stored at 4°C for three months and -20°C, stable for up to one year.



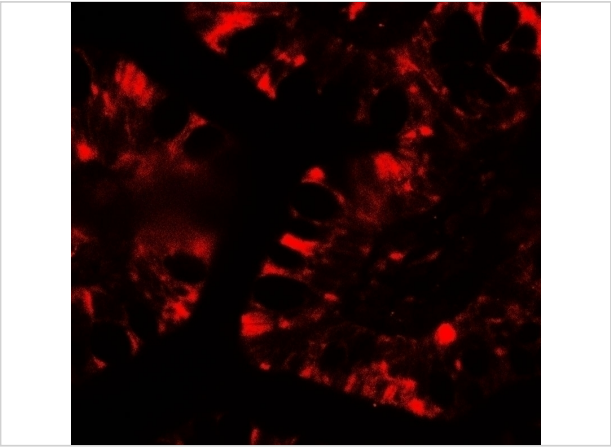
IFIT1 Antibody 1

Western blot analysis of IFIT1 in rat small intestine tissue lysate with IFIT1 antibody at 1 µg/ml.



IFIT1 Antibody 2

Immunohistochemistry of IFIT1 in human small intestine tissue with IFIT1 antibody at 5 µg/mL.



IFIT1 Antibody 3

Immunofluorescence of IFIT1 in human small intestine tissue with IFIT1 antibody at 20 µg/mL.

Disclaimer

Disclaimer	Optimal dilutions/concentrations should be determined by the end user. The information provided is a guideline for product use. This product is for research use only.
------------	--

For research use only. For additional information, visit ProSci's [Terms and Conditions Page](#).