

## GDPD5 Antibody

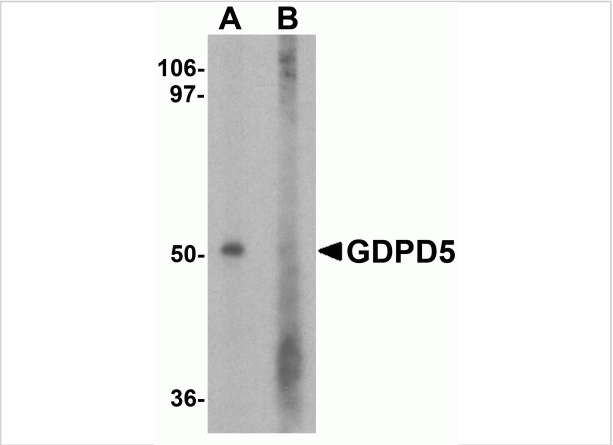
CATALOG NUMBER: 7739

### Specifications

Host Species	Rabbit
Species Reactivity	Human, Mouse, Rat
Homology	Predicted species reactivity based on immunogen sequence: Chicken: (94%)
Immunogen	GDPD5 antibody was raised against an 18 amino acid peptide near the amino terminus of human GDPD5. The immunogen is located within the first 50 amino acids of GDPD5.
Conjugate	Unconjugated
Tested Applications	ELISA, IF, IHC-P, WB
User Note	Optimal dilutions for each application to be determined by the researcher.
Specificity	GDPD5 antibody is human, mouse and rat reactive. At least three isoforms of GDPD5 are known to exist.
Predicted Molecular Weight	Predicted: 40, 67 kDa Observed: 52 kDa

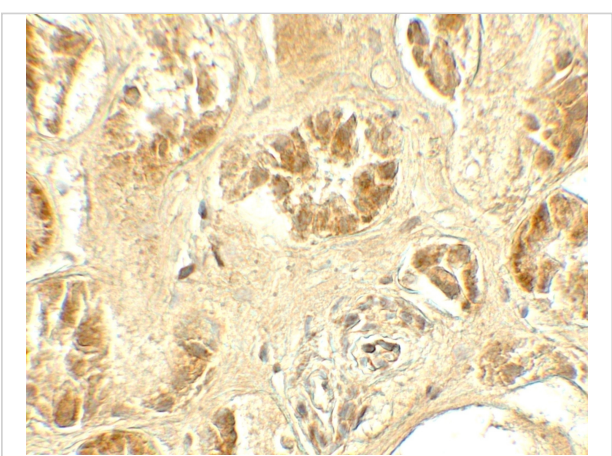
### Properties

Purification	GDPD5 antibody is affinity chromatography purified via peptide column.
Clonality	Polyclonal
Isotype	IgG
Physical State	Liquid
Buffer	GDPD5 Antibody is supplied in PBS containing 0.02% sodium azide.
Concentration	1 mg/mL
Storage Conditions	GDPD5 antibody can be stored at 4°C for three months and -20°C, stable for up to one year.



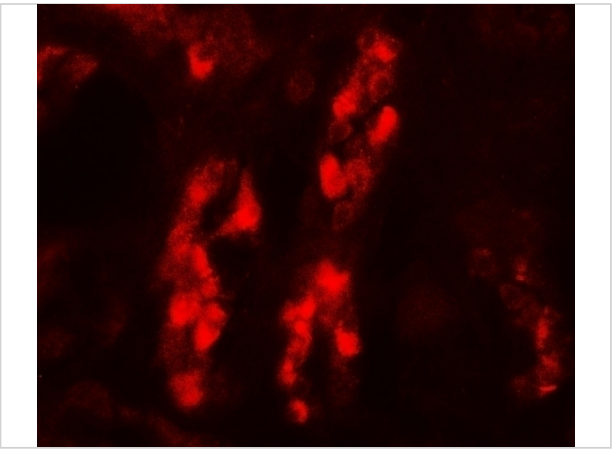
GDPD5 Antibody 1

Western blot analysis of GDPD5 in mouse kidney tissue lysate with GDPD5 antibody at 1 µg/ml in (A) the absence and (B) the presence of blocking peptide.



GDPD5 Antibody 2

Immunohistochemistry of GDPD5 in human kidney tissue with GDPD5 antibody at 5 µg/mL.



GDPD5 Antibody 3

Immunofluorescence of GDPD5 in human kidney tissue with GDPD5 antibody at 20 µg/mL.

Disclaimer

Disclaimer	Optimal dilutions/concentrations should be determined by the end user. The information provided is a guideline for product use. This product is for research use only.
------------	--

For research use only. For additional information, visit ProSci's [Terms and Conditions Page](#).