

## TET2 Antibody

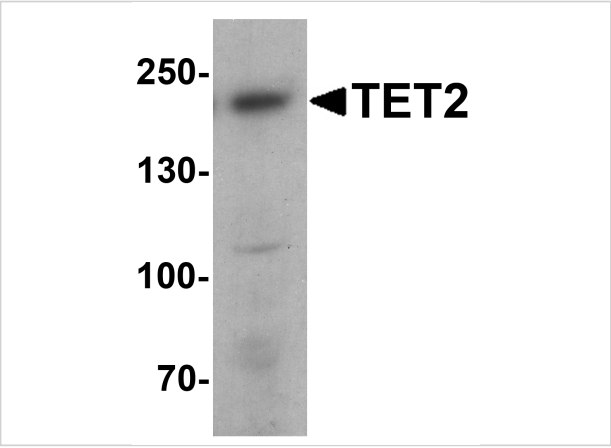
CATALOG NUMBER: 7731

### Specifications

Host Species	Rabbit
Species Reactivity	Human, Mouse
Immunogen	TET2 antibody was raised against an 18 amino acid peptide near the carboxy terminus of human TET2. The immunogen is located within amino acids 1550 - 1600 of TET2.
Conjugate	Unconjugated
Tested Applications	ELISA, WB
User Note	Optimal dilutions for each application to be determined by the researcher.
Specificity	TET2 antibody is human and mouse reactive. At least two isoforms of TET2 are known to exist; this antibody will detect the larger isoforms. This antibody is predicted to not cross-react with TET1 and TET3.
Predicted Molecular Weight	Predicted: 220 kDa Observed: 220 kDa

### Properties

Purification	TET2 antibody is affinity chromatography purified via peptide column.
Clonality	Polyclonal
Isotype	IgG
Physical State	Liquid
Buffer	TET2 Antibody is supplied in PBS containing 0.02% sodium azide.
Concentration	1 mg/mL
Storage Conditions	TET2 antibody can be stored at 4°C for three months and -20°C, stable for up to one year.



TET2 Antibody 1

Western blot analysis of TET2 in 3T3 cell lysate with TET2 antibody at 1 µg/ml.

Disclaimer

Disclaimer	Optimal dilutions/concentrations should be determined by the end user. The information provided is a guideline for product use. This product is for research use only.
------------	--

For research use only. For additional information, visit ProSci's [Terms and Conditions Page](#).