

## APOBEC3B Antibody

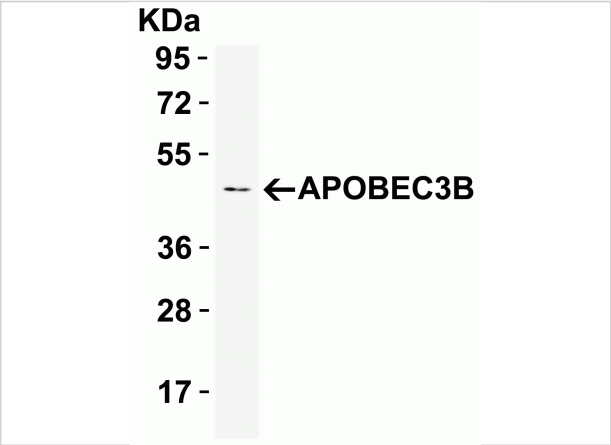
CATALOG NUMBER: 7725

### Specifications

Host Species	Rabbit
Species Reactivity	Human
Immunogen	APOBEC3B antibody was raised against a 14 amino acid peptide near the amino terminus of human APOBEC3B. The immunogen is located within amino acids 20 - 70 of APOBEC3B.
Conjugate	Unconjugated
Tested Applications	ELISA, IF, IHC-P, WB
User Note	Optimal dilutions for each application to be determined by the researcher.
Specificity	APOBEC3B antibody is human, mouse and rat reactive . At least three isoforms of APOBEC3B are known to exist; this antibody will detect all three. APOBEC3B antibody may cross-react with APOBEC3D.
Predicted Molecular Weight	Predicted: 42 kDa Observed: 48 kDa

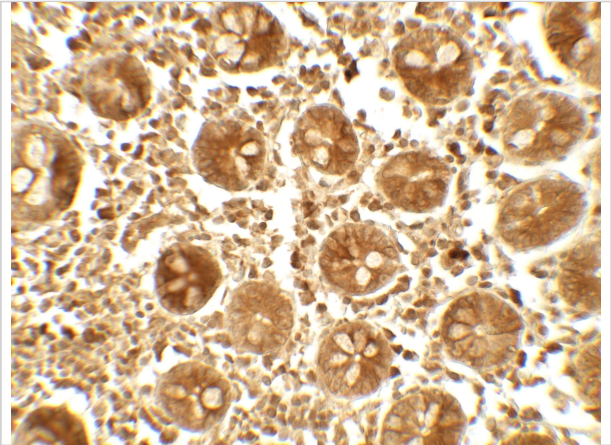
### Properties

Purification	APOBEC3B antibody is affinity chromatography purified via peptide column.
Clonality	Polyclonal
Isotype	IgG
Physical State	Liquid
Buffer	APOBEC3B Antibody is supplied in PBS containing 0.02% sodium azide.
Concentration	1 mg/mL
Storage Conditions	APOBEC3B antibody can be stored at 4°C up to one year. Antibodies should not be exposed to prolonged high temperatures.



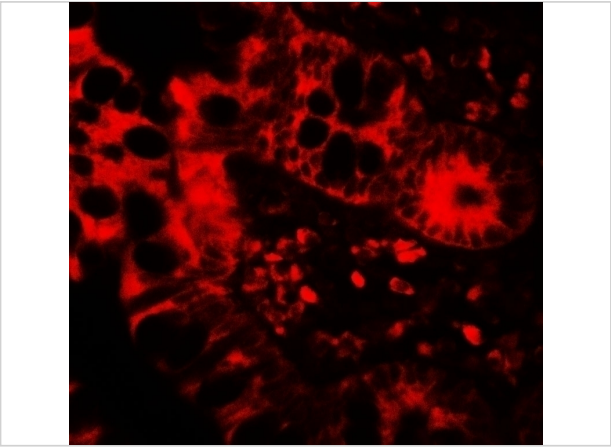
APOBEC3B Antibody 1

Western blot analysis of APOBEC3B in HepG2 cell lysate with APOBEC3B antibody at 1 µg/mL.



APOBEC3B Antibody 2

Immunohistochemistry of APOBEC3B in human small intestine tissue with APOBEC3B antibody at 5 µg/mL.



APOBEC3B Antibody 3

Immunofluorescence of APOBEC3B in human small intestine tissue with APOBEC3B antibody at 20 µg/mL.

Disclaimer

Disclaimer	Optimal dilutions/concentrations should be determined by the end user. The information provided is a guideline for product use. This product is for research use only.
------------	--

For research use only. For additional information, visit ProSci's [Terms and Conditions Page](#).