

## LAMTOR3 Antibody

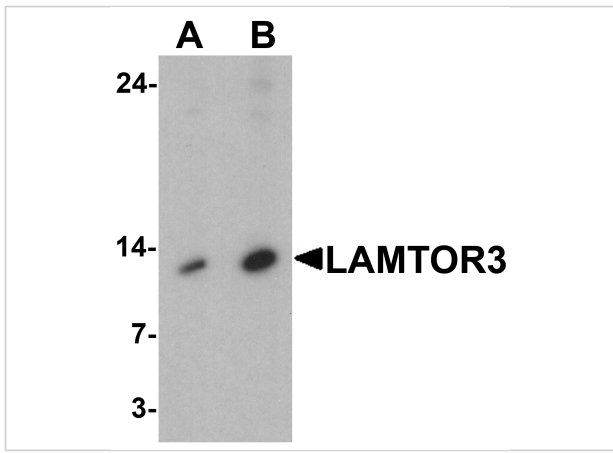
CATALOG NUMBER: 7713

### Specifications

Host Species	Rabbit
Species Reactivity	Human, Mouse, Rat
Homology	Predicted species reactivity based on immunogen sequence: Chicken: (100%), Bovine: (100%)
Immunogen	LAMTOR3 antibody was raised against an 15 amino acid peptide near the center of human LAMTOR3. The immunogen is located within amino acids 40 - 90 of LAMTOR3.
Conjugate	Unconjugated
Tested Applications	ELISA, IF, IHC-P, WB
User Note	Optimal dilutions for each application to be determined by the researcher.
Specificity	LAMTOR3 antibody is human, mouse and rat reactive. At least two isoforms of LAMTOR3 are known to exist; this antibody will detect both isoforms. LAMTOR3 antibody is predicted to not cross-react with other LAMTOR family proteins.
Predicted Molecular Weight	Predicted: 14 kDa Observed: 13 kDa

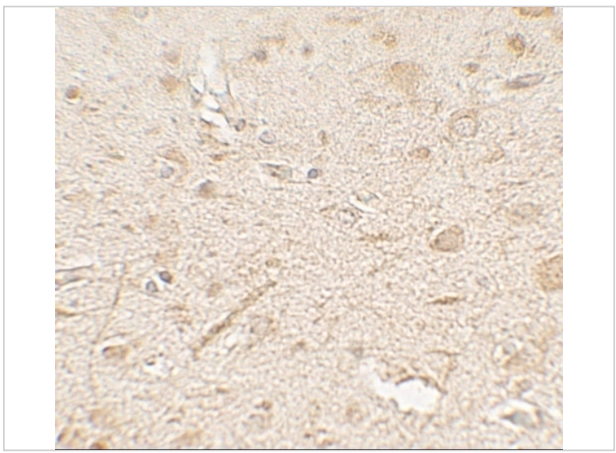
### Properties

Purification	LAMTOR3 antibody is affinity chromatography purified via peptide column.
Clonality	Polyclonal
Isotype	IgG
Physical State	Liquid
Buffer	LAMTOR3 Antibody is supplied in PBS containing 0.02% sodium azide.
Concentration	1 mg/mL
Storage Conditions	LAMTOR3 antibody can be stored at 4°C for three months and -20°C, stable for up to one year.



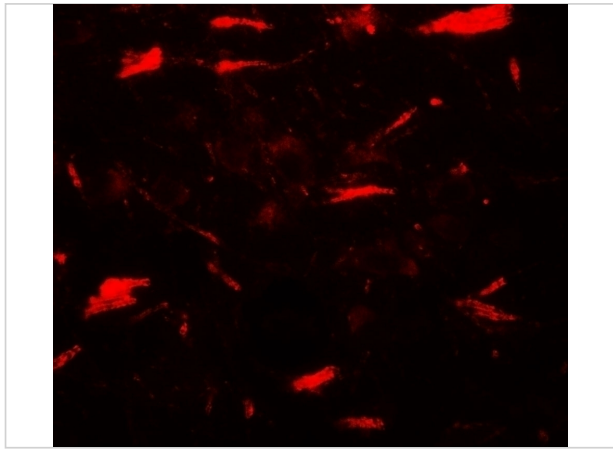
### LAMTOR3 Antibody 1

Western blot analysis of LAMTOR3 in human brain tissue lysate with LAMTOR3 antibody at (A) 1 and (B) 2  $\mu\text{g}/\text{ml}$



### LAMTOR3 Antibody 2

Immunohistochemistry of LAMTOR3 in human brain tissue with LAMTOR3 antibody at 5  $\mu\text{g}/\text{mL}$ .



### LAMTOR3 Antibody 3

Immunofluorescence of LAMTOR3 in human brain tissue with LAMTOR3 antibody at 20  $\mu\text{g}/\text{mL}$ .

## Disclaimer

<b>Disclaimer</b>	Optimal dilutions/concentrations should be determined by the end user. The information provided is a guideline for product use. This product is for research use only.
-------------------	--

For research use only. For additional information, visit ProSci's [Terms and Conditions Page](#).