

SUZ12 Antibody

CATALOG NUMBER: 7701

Specifications

Host Species	Rabbit
Species Reactivity	Human
Homology	Predicted species reactivity based on immunogen sequence: Mouse: (79%)
Immunogen	SUZ12 antibody was raised against a 19 amino acid peptide near the center of human SUZ12. The immunogen is located within amino acids 400 - 450 of SUZ12.
Conjugate	Unconjugated
Tested Applications	ELISA, IF, IHC-P, WB
User Note	Optimal dilutions for each application to be determined by the researcher.
Specificity	SUZ12 antibody is human specific.
Predicted Molecular Weight	Predicted: 81 kDa Observed: 96 kDa

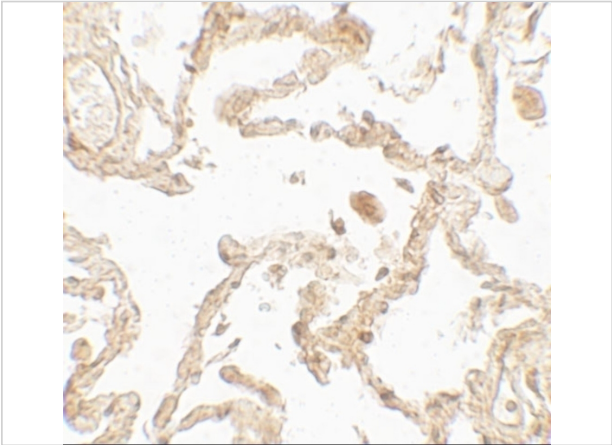
Properties

Purification	SUZ12 antibody is affinity chromatography purified via peptide column.
Clonality	Polyclonal
Isotype	IgG
Physical State	Liquid
Buffer	SUZ12 antibody is supplied in PBS containing 0.02% sodium azide.
Concentration	1 mg/mL
Storage Conditions	SUZ12 antibody can be stored at 4°C for three months and -20°C, stable for up to one year.



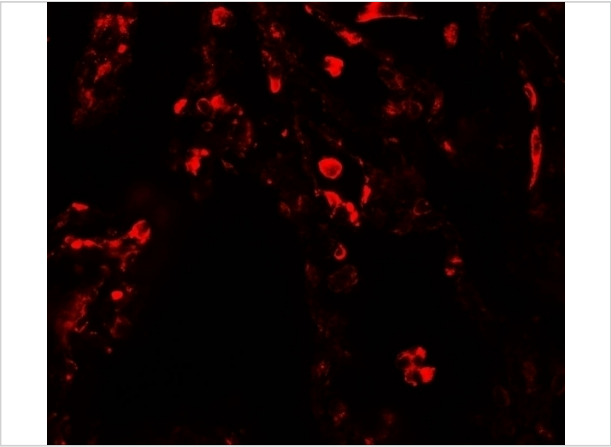
SUZ12 Antibody 1

Western blot analysis of SUZ12 in human liver tissue lysate with SUZ12 antibody at 1 µg/ml.



SUZ12 Antibody 2

Immunohistochemistry of SUZ12 in human lung tissue with SUZ12 antibody at 5 µg/mL.



SUZ12 Antibody 3

Immunofluorescence of SUZ12 in human lung tissue with SUZ12 antibody at 20 µg/mL.

Disclaimer

Disclaimer	Optimal dilutions/concentrations should be determined by the end user. The information provided is a guideline for product use. This product is for research use only.
------------	------------------------------------------------------------------------------------------------------------------------------------------------------------------------

For research use only. For additional information, visit ProSci's [Terms and Conditions Page](#).